

SHOW NOTES

PALACE THEATER PROGRAM BOOK



The Addams Family

A MUSICAL COMEDY

January 2025



Let's take on tomorrow,
TOGETHER.

When the time is right for your
business, Webster is ready to help
you keep moving forward.

Webster Bank[®]

[websterbank.com](https://www.websterbank.com)

LET YOUR EDUCATION TAKE CENTER STAGE



Post University proudly supports the Palace Theater and the cultural enrichment it brings to the Greater Waterbury community.

Explore our programs and learn how Post can support you at **Post.edu**.





MERIDEN
NEW HAVEN • WALLINGFORD
MILFORD • DERBY

WWW.SUZIOYORKHILL.COM
888-SUZIOCO • 888-789-4626

TRACY | DRISCOLL
 Protecting how you work, live and play

Tracy Driscoll offers professional guidance and a variety of products to help you meet your individual and business needs. Following is a list of products we have available:

Commercial Insurance	Personal Insurance	Life and Employee Benefits	Wealth Management
~ Property	~ Auto	~ Individual Health	~ Traditional IRA
~ Liability	~ Home / Condo / Renters	~ Group Health	~ Roth IRA
~ Workers Compensation	~ Umbrella	~ Medicare Advantage	~ Simple IRA
~ Auto	~ Watercraft/Yachts	~ Medicare Supplement	~ Annuities
~ EPLI	~ Motorhomes	~ Dental	~ 401k Plan
~ Contractor Bonds	~ Antique Auto	~ Life Insurance	~ Term Life
~ Construction Equipment	~ Motorcycle	~ Short and Long Term Disability	~ Whole Life
~ Errors and Omissions	~ Waterfront Property	~ Voluntary Benefits	~ Long Term Care
~ Directors and Officers	~ High Valued Properties	~ HSA / FSA / HRA	~ 529 College Planning
~ Cyber	~ Worksite Programs	~ COBRA Services	

Contact: **Tracy, Driscoll & Co., Inc.**
 O: 860.589.3434
 10 Main Street, 4th Floor, Bristol, CT. 06010
www.tracy-driscoll.com

Securities offered through Registered Representatives of Cambridge Investment Research, Inc., a broker-dealer, member of FINRA / SIPC. Advisory services through Ohanesian / Lecours, a registered Investment Advisor. Cambridge and Ohanesian / Lecours are not affiliated

B&Z MANAGEMENT PROUDLY SUPPORTS THE PALACE THEATER

LOCALLY OWNED AND OPERATED
 DUNKIN' LOCATIONS IN THE
 GREATER WATERBURY AREA

DUNKIN'



Expert cancer care
RIGHT HERE

THE HAROLD LEEVER REGIONAL CANCER CENTER
 (203) 575-5555 • leevecancercenter.org



A Partnership Worth Celebrating.

Products and services
that help you succeed.

- Personal Banking & Loans
- Business Banking & Loans
- Mortgages & Equity Loans
- Community Support

IvesBank.com

844.723.2265

NMLS #763547

Member FDIC

The logo features a stylized blue icon of a building with three vertical columns on the left, followed by the words "IVES BANK" in a large, blue, serif font.



Experience the Award-Winning Care at Saint Mary's Hospital

This year we have been awarded both a Four-Star Quality Rating from the Centers of Medicare and Medicaid Services (CMS) and our third straight "A" from the Leapfrog Hospital Safety Grade.

Recognition for our quality care, safety and patient satisfaction shows that you are our top priority!



Saint Mary's Hospital
Trinity Health

56 Franklin Street, Waterbury, Connecticut 06706

TrinityHealthOfNE.org



For over 175 years, we've been at the heart of Waterbury.

As a 6th generation family business, we believe in expanding possibilities for our communities through volunteer work, direct investment and environmental stewardship.



Learn about our legacy.



Special Thank You

TO OUR 20TH YEAR PROGRAM+ ADVERTISERS



WebsterBank
Broadway Series

ionBANK

IVES BANK

Post
UNIVERSITY®
EST. 1890



**CENTURION WEALTH
MANAGEMENT**

MONTAGNO INSURANCE INC.

**CLOCKTOWN BREWING
COMPANY**

PEPSI COLA OF BRISTOL

**DIAGNOSTIC RADIOLOGY
ASSOCIATES**

POST UNIVERSITY

**DUNKIN' —
B&Z MANAGEMENT**

**TRINITY HEALTH
OF NEW ENGLAND —
ST. MARY'S HOSPITAL**

**HAROLD LEEVER REGIONAL
CANCER CENTER**

TOMASSO GROUP

HUBBARD-HALL

TORRICO

MATHNASIUM



DON'T MISS A BEAT!

WITH SENNHEISER MOBILECONNECT

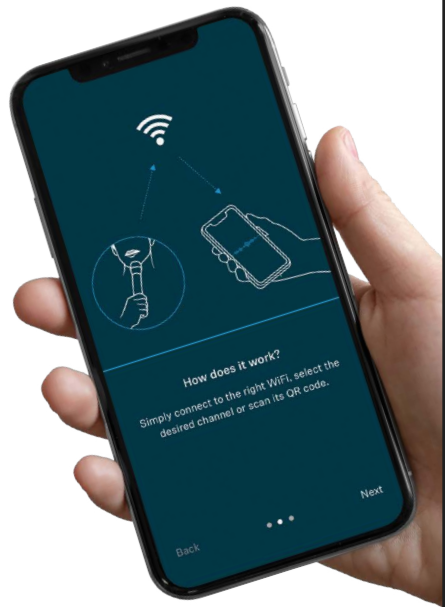
Have you ever struggled to hear a show at the theater?
**LISTEN YOUR WAY — WITH LIVE AUDIO STREAMING
DIRECTLY TO YOUR PHONE!**

Download *Sennheiser MobileConnect* to enhance your theater experience.

NOTE: See us at Coat Check before the show begins to complete set-up.

The *Sennheiser MobileConnect* application on your smartphone connects audio right to your Bluetooth-enabled hearing aids, cochlear implants or headphones.

This service is available for every performance.



ENJOY DINNER & A SHOW!

CLOCKTOWN BREWING COMPANY

TIME BEST SPENT

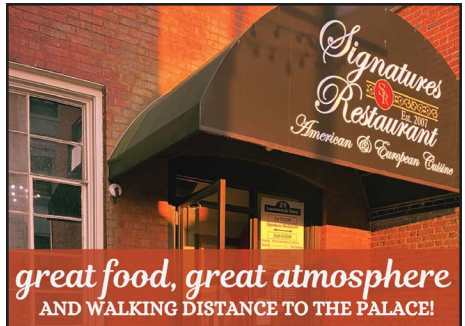
From crafting the finest clocks
to crafting the finest beer

lively taproom | family friendly | live music
variety of craft beers and specialty cocktails
wood-fired pizzas and classic pub fare

135 South Main St, Thomaston
clocktownbrewingco.com
(860) 880-8240

Hours:

Wednesday 4-9 pm
Thursday 4-10 pm
Friday-Saturday Noon-10 pm
Sunday 11am-8pm (Brunch 11 am-3 pm)



great food, great atmosphere
AND WALKING DISTANCE TO THE PALACE!

Signatures Restaurant

203-575-1190
29 Leavenworth St.
Waterbury, CT 06702



PALACE
THEATER

Poli Club PRE-SHOW DINING

The Poli Club is the theater's elegant, catered dining room open for dinner before select Broadway performances. The Poli Club offers a creative & delicious prix fixe menu from Verbena Caterers.

Featuring a first class wine list and top shelf liquors, the Poli Club bar is open to members for pre-show cocktails and VIP intermission beverage services.

TO LEARN MORE ABOUT MEMBERSHIP:

CALL NATALIE LAWLOR 203.346.2009

EMAIL LAWLOR@PALACETHEATERCT.ORG

BOOK YOUR SPECIAL EVENTS HERE!



LIVE ENTERTAINMENT

CRAFT COCKTAILS

SIGNATURE SMALL PLATES

PRIVATE EVENTS



88 KEYS
on Main
PIANO BAR & CAFE

Visit Us!

860.417.2414

88KEYSPIANOBAR.COM

1278 MAIN STREET, WATERTOWN CT

LETTER FROM THE CHAIR

As the Chair of the Board of Directors of the Palace Theater, I have the great pleasure and honor of welcoming you to this beautiful, treasured theater. This season is a milestone one, as we are celebrating our 20th Anniversary year!

Just over two decades ago, a group of dedicated citizens, together with local and state leaders, organized to restore and bring life back to this historic facility, which had been shuttered for around fifteen years. On November 12, 2004, after completing an extensive renovation, the Palace Theater reopened its doors to the public, showcasing its new state-of-the-art stage and perfectly restored lobby spaces.



In the past twenty years, we have welcomed well over two million people to our performances, presentations, and events, introduced thousands of young students to the excitement of live theater, and served as the premier arts and cultural destination for the Greater Waterbury community and its surrounding towns.

In addition to our capacity as a performance venue, we are a cultural center, a reception facility for special events, an education space, and we also serve as the performance home for the Waterbury Arts Magnet School.

We have achieved a great deal in twenty years, and there remains much opportunity for growth in the decades ahead. We look forward to accomplishing this work alongside you, our patrons and community partners. On behalf of the Board of Directors and the staff, we thank you for joining us and supporting the arts, whether you are a 20-year supporter or a first-time visitor.

Welcome to the Palace!

Sincerely,

A handwritten signature in black ink, appearing to read "Martin G. Morgado". The signature is fluid and cursive, with the first name being the most prominent.

Martin G. Morgado
Chair of the Board of Directors



COMMUNITY FUNERAL HOME LLC

The Corona Family Funeral & Cremation Services

Joseph Corona

Funeral Director / Owner

**72 Waterbury Road
Prospect, CT 06712**

Next to the Post Office

203.758.3000

www.prospectcommunityfh.com

info@prospectcommunityfh.com



**Gaffney, Bennett
and Associates, Inc.**

Government Relations and Political Consulting

One Liberty Square
New Britain, CT 06051
860-229-0301

EBM

IT Solutions Provider



Cybersecurity & Managed IT Services

Our approach is simple: we provide the best advice and innovative technology with exceptional customer service.

ebmusa.com | Call us at **203-254-8500**



TRIPLE STITCH™
BRAND PROMOTIONS

800-633-3536

sales@triplestitch.com

TripleStitch.com

Prospect, CT 06712

**Custom Apparel &
Promotional Products**

LETTER FROM THE CEO

Welcome to the Palace Theater, and our second presentation of the 2024–2025 Webster Bank Broadway Season! In this, our 20th Anniversary year, we are proud to be hosting two National Tour premieres, including this brand-new production of *The Addams Family*. The show's cast and crew just spent two weeks rehearsing on our stage in preparation for this opening weekend, and we are thrilled to have them join the roster of talented artists who have performed here over the past two decades.



Once you've been to the Palace, whether you are a performer, volunteer, patron, or community member, you become part of our extended Palace family. We are grateful for all our extended family members and partners, and we would not be here today were it not for the support that each of you has given us.

In the larger family of local arts organizations, one of our close working partners is the Waterbury Symphony Orchestra, and we are honored to be presenting two programs with them this spring. On March 15, we will show a screening of the classic '80s film, *Back to the Future*, with full orchestral accompaniment by the WSO. And on May 17, we are hosting the WSO and several Broadway performers in *Broadway Scores*, an exciting evening celebrating 20 years of Broadway at the Palace, with musical selections from shows that have graced our stage since our reopening in 2004. We hope to see you at one or both of these fun events!

Thank you for helping us celebrate our 20th Anniversary and supporting the arts. I hope you enjoy the show!

Sincerely,

A handwritten signature in black ink that reads "Frank Tavera". The signature is written in a cursive style and is positioned above the printed name and title.

Frank Tavera
CEO



The
Addams
Family
A MUSICAL COMEDY

JANUARY 17-18, 2025



WebsterBank®



Post Makes It Personal

Big League Productions, Inc.

PRESENTS

The
Addams
Family
A MUSICAL COMEDY

Book by MARSHALL BRICKMAN and RICK ELICE
Music and Lyrics by ANDREW LIPPA

Based on Characters Created by Charles Addams

STARRING

JOHN ADKISON RODRIGO ARAGÓN JACKSON BARNES SARAH MACKENZIE BARON
CHRIS CARSTEN LOGAN CLINGER DAVID ELDRIDGE SHEREEN HICKMAN
RENEE KATHLEEN KOHER MELODY MUNITZ

WITH

DALTON BERTOLONE SARAH COLEMAN JOHN CUOZZO MAX DESANTIS
LYNDELL FINGER COLLIN HENDLEY ALYSSA JACQUELINE SAMANTHA PARADA
ALEX PLETIKAPICH SOPHIE RAPIEJKO DELANEY SHEA GRETCHEN VOSBURGH

SET DESIGN
RANDEL WRIGHT

LIGHTING & VIDEO DESIGN
CHARLES FORD

SOUND DESIGN
ANTHONY LOPEZ
TIMOTHY RIGGS

MUSIC SUPERVISOR
THOMAS FOSNOCHT

**ASSOCIATE DIRECTOR &
ASSOCIATE CHOREOGRAPHER**
EMILIE RENIER

**HAIR & MAKEUP
COORDINATOR**
LISHA MICHEL

**ADDITIONAL COSTUME DESIGN &
COSTUME CONSULTANT**
TRISTAN RAINES

ORCHESTRATIONS
LARRY HOCHMAN

TECHNICAL SUPERVISOR
JAMES BOOK

CASTING DIRECTOR
ALISON FRANCK, C.S.A.

TOUR PRESS & MARKETING
TRUE MARKETING
WENDY J. CONNOR

GENERAL MANAGEMENT
BIG LEAGUE PRODUCTIONS
ZACH KROHN

COMPANY MANAGER
SHAWN PASSERO

PRODUCTION STAGE MANAGER
RILEY GIBSON

EXECUTIVE PRODUCER
DANIEL SHER

DIRECTION & CHOREOGRAPHY BY
ANTOINETTE DIPIETROPOLO

Tour booking by Tracey McFarland, BROADWAY & BEYOND THEATRICALS

Costumes, wigs, and props provided by 3-D THEATRICALS. Costumes designed by Julian Crouch and Phelim McDermott

THE ADDAMS FAMILY A MUSICAL COMEDY is presented through special arrangement with Theatrical Rights Worldwide,
1180 Avenue of the Americas, Suite 640 New York, NY 10036, www.theatricalrights.com

Originally produced on Broadway by Stuart Oken, Roy Furman, Michael Leavitt, Five Cent Productions, Stephen Schuler,
Decca Theatricals, Scott M. Delman, Stuart Ditsky, Terry Allen Kramer, Stephanie P. McClelland, James L. Nederlander, Eva Price,
Jam Theatricals/Mary LuRoffe, Pittsburgh CLO/GuttermanSwinsky, Vivek Tiwary/Gary Kaplan, The Weinstein Company/Clarence, LLC,
Adam Zotovich/Tribe Theatricals; By Special Arrangement with Elephant Eye Theatrical

CAST



John Adkison



Rodrigo Aragón



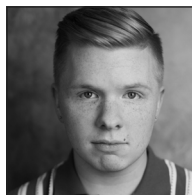
Jackson Barnes



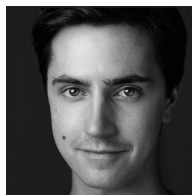
Sarah Mackenzie Baron



Chris Carsten



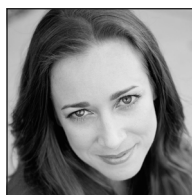
Logan Clinger



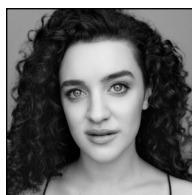
David Eldridge



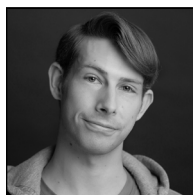
Shereen Hickman



Renee Kathleen Koher



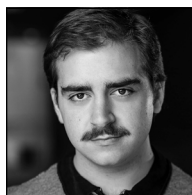
Melody Munitz



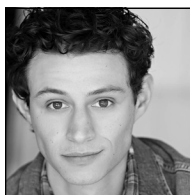
Dalton Bertolone



Sarah Coleman



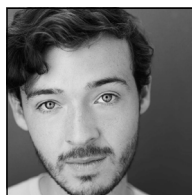
John Cuozzo



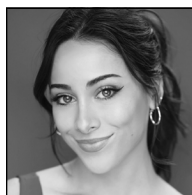
Max DeSantis



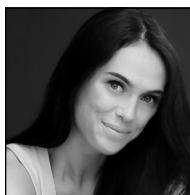
Lyndell Finger



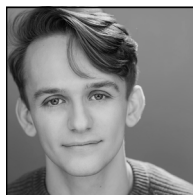
Collin Hendley



Alyssa Jacqueline



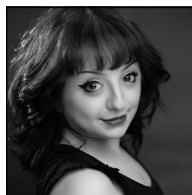
Samantha Parada



Alex Pletikapich



Sophie Rapiejko



Delaney Shea



Gretchen Vosburgh

THE ADDAMS FAMILY

Gomez Addams	RODRIGO ARAGÓN
Morticia Addams.....	RENEE KATHLEEN KOHER
Uncle Fester.....	CHRIS CARSTEN
Grandma.....	SHEREEN HICKMAN
Wednesday Addams.....	MELODY MUNITZ
Pugsley Addams	LOGAN CLINGER
Lurch	JACKSON BARNES

THE BEINEKE FAMILY

Mal Beineke.....	JOHN ADKISON
Alice Beineke.....	SARAH MACKENZIE BARON
Lucas Beineke.....	DAVID ELDRIDGE

THE ADDAMS ANCESTORS

DALTON BERTOLONE, SARAH COLEMAN, JOHN CUOZZO, MAX DESANTIS,
 LYNDELL FINGER, COLLIN HENDLEY, ALYSSA JACQUELINE, SAMANTHA PARADA,
 ALEX PLETIKAPICH, SOPHIE RAPIEJKO, DELANEY SHEA, GRETCHEN VOSBURGH

UNDERSTUDIES

For Gomez Addams—JOHN ADKISON, JOHN CUOZZO; for Morticia Addams—SAMANTHA PARADA. GRETCHEN VOSBURGH; for Uncle Fester—JOHN CUOZZO, MAX DESANTIS; for Grandma—SOPHIE RAPIEJKO, GRETCHEN VOSBURGH; for Wednesday Addams—SARAH COLEMAN, ALYSSA JACQUELINE; for Pugsley Addams—LYNDELL FINGER, ALEX PLETIKAPICH; for Lurch—DALTON BERTOLONE, MAX DESANTIS; for Mal Beineke—JOHN CUOZZO, MAX DESANTIS; for Alice Beineke—SOPHIE RAPIEJKO, GRETCHEN VOSBURGH; for Lucas Beineke—DALTON BERTOLONE, ALEX PLETIKAPICH.

SWINGS

JOHN CUOZZO, GRETCHEN VOSBURGH

Dance Captain: ALYSSA JACQUELINE
 Assistant Dance Captain: JOHN CUOZZO

ORCHESTRA

Music Director / Keyboard 1: THOMAS FOSNOCHT
 Assistant Conductor / Keyboard 2: LUKE MOLLOY
 Drums—SAL MAZZOTTA
 Bass—MIKE PARISI
 Guitar —NICK RIMANIC
 Trumpet—CARMELO VILLEGAS
 Reeds 1—MEGAN HOWELL
 Reeds 2—JOSH ROBERTS
 Trombone—JIM TANGNEY

MUSICAL NUMBERS

ACT ONE

Overture.....	Orchestra
When You're an Addams	The Addams Family, Ancestors
Fester's Manifesto	Fester
Two Things.....	Gomez
Wednesday's Growing Up	Gomez
Three Things.....	Gomez
Trapped.....	Gomez
Pulled	Wednesday
Four Things.....	Gomez
One Normal Night	Company
But Love (Reprise 1 & 2)	Fester, Ancestors
Secrets	Morticia, Alice, Female Ancestors
Gomez's What If	Gomez
What If	Pugsley
Full Disclosure (Part 1).....	Company
Waiting.....	Alice, Ancestors
Full Disclosure (Part 2).....	Company

THERE WILL BE ONE 15-MINUTE INTERMISSION

ACT TWO

Opening Act II.....	Orchestra
Just Around the Corner	Morticia, Ancestors
The Moon and Me.....	Fester, Female Ancestors
Happy/Sad	Gomez
Crazier Than You	Wednesday, Lucas, Mal, Alice
Not Today	Gomez
Live Before We Die / Tango de Amor	Gomez, Morticia
Finale Act II.....	Company
Bows	Company



The use of any recording device, either audio or video, and the taking of photographs, either with or without flash, is strictly prohibited. Please turn off all electronic devices such as cellular phones, beepers and watches

WHO'S WHO IN THE CAST

JOHN ADKISON (*Mal Beineke*) National Tour: *My Fair Lady* (Colonel Pickering), *The Music Man* (Harold Hill), *Elf* (Walter Hobbs). Regional: Laguna Playhouse, People's Light & Theatre Co., Sierra Repertory Theatre, Gablestage, Ocean State Theatre Co. Stock: Little Theatre on the Square, Theatre by the Sea, Barn Theatre. More at johnadkison.com. Love to JCA.

RODRIGO ARAGÓN (*Gomez Addams*) An actor/singer/host for over 25 years, in Argentina he appeared in *Grease*, *Zorba the Greek*, and *Opera Pampa*, among others. He worked for Disney in Chile, Colombia, Peru, and in Tokyo Disneyland, Japan (2001-2002). He participated in 5 motion pictures, several TV shows, and in the U.S. in 5 Telemundo soaps, 3 TV films, over 25 TV commercials and hundreds of musical shows. Classically trained, he's thrilled to be making his debut with Big League.

JACKSON BARNES (*Lurch*) National Tour Debut! Recent credits: *Jersey Boys* (Nick Massi), *Sweeney Todd* (Sweeney Todd), *Jesus Christ Superstar* (Caiaphas), *Merry Wives of Windsor* (Falstaff), *Legally Blonde* (Ensemble). From Argyle, TX. Attended Oklahoma City University. Love to his family, friends, creative team, and FranckCasting! IG: @jacksonabarnes All glory to God!

SARAH MACKENZIE BARON (*Alice Beineke*) A Halloween aficionado, Sarah (she/her) is ghoulishly giddy to be a part of her first national tour. Credits: Ethel (*Footloose*), the Witch (*Into The Woods*), originating Michael Scott in *The Office!*: A Musical Parody Off-Broadway. Love to Ben, Coraline & Freya, Mom & Dad, Antoinette, and the entire cast & crew! @saronbaroness

CHRIS CARSTEN (*Fester*) Mr. Carsten is a veteran performer appearing in multiple Big League Productions projects spanning the last three decades. Some of his favorite roles include John Adams, Henry Higgins, Jean Shepherd, and Captain Hook. He would like to thank his three wonder daughters for their love and support.

LOGAN CLINGER (*Pugsley Addams*) Logan is thrilled to make his national tour debut as Pugsley Addams! A graduate of the Institute for American Musical Theatre, he has previously portrayed SpongeBob SquarePants, Crutchie and Nostradamus. Logan is deeply grateful to FSETALENT and his wonderful family for their support!

DAVID ELDRIDGE (*Lucas*) David Eldridge is originally from North Idaho, and holds a degree in Music Theatre from OCU. He is thankful for his friend's and family's love and undying support, and grateful to the artistic team for giving him the opportunity to perform in his first National Tour. Enjoy! Soli Deo Gloria!

SHEREEN HICKMAN (*Grandma*) Shereen Hickman is best known as a creator/lead clown with the world-renowned *Cirque du Soleil*. Starring as Ginger in *Zumanity* in Las Vegas, on Broadway as Margaret in *Banana SHeepl* and then touring under the Big Top as Deeda in *Amaluna* (with Tony award-winning director Diane Paulus). Shereen is the first female company member of Parallel Exit, the Drama Desk-nominated, award-winning physical theatre company. Audience favorites include Marguerite in *Sunset Circus*, and the erratic real estate mogul Libby T. Grump in *I Love Bob*. Shereen also enjoys a diverse career in voiceovers with over 65 voice acting credits to date. She is also an alumna of The Groundlings in LA. An avid lover of laughter and general whimsy, Shereen is thrilled to be part of The Family.

RENEE KATHLEEN KOHER (*Morticia Addams*) is thrilled to be revisiting one of her all time favorite roles with The Addams Family Nat'l tour! Originally from Chicago, IL, Renee has performed all over the world as a singer, dancer and aerialist. Some of her favorite credits include: *Mame* (Mame), Betty (White Christmas), *Gypsy* (Tessi Turra/Rose Alt.), *Little Shop Of Horrors* (Audrey), *Mary Poppins* (Disney's Mary Poppins), *Kiss Me Kate* (Lily/Katherine), *The Marvelous Wonderettes* (Missy) *Nunsence* (Amnesia), *Cabaret* (Sally Bowles), *Pippin* (Fastrata) and *The Wizard Of Oz* (The Wicked Witch Of The West). Renee also performed with Disney Cruise Line and Tokyo Disney Resort. She is also the founder of RKK Voice and Acting Studio and Co-Founder of the Arizona Musical Theater Academy. A huge thank you to her agent Matilda (Fictitious) Mom, Dad, and Ryan for always supporting her dreams, and her beautiful family Shonn and Harper.. for you always. www.reneekathleenkoher.com / IG: @tokyoarial

MELODY MUNITZ (*Wednesday Addams*) is ecstatic to embody the princess of darkness in this creepy, kooky, iconic family! Credits include leading the *American Girl* National Tour, 15 shows Off-Broadway, concerts at Carnegie Hall & Lincoln Center, and her solo show *The Science of Love* (BroadwayWorld Award

WHO'S WHO IN THE CAST

'23). Endless gratitude to Shari, Andy, Jazz, Antoinette, and every inspiration & support along the way. Penn State Honors Musical Theatre & Psychology ('22, valedictorian). Dreamer: Keep Going! melodymunitz.com @melody_munitz

DALTON BERTOLONE (*Ancestor, u/s Lucas, u/s Lurch*) Dalton Bertolone is thrilled to be making his national tour debut! Favorite credits include: *A Chorus Line* (The Broadway Palm, San Francisco Playhouse, and Sierra Repertory Theatre); *West Side Story* (New London Barn Playhouse and Connecticut Repertory Theatre); *Newsies* (Utah Festival of Opera); *Elf* (Arizona Broadway Theatre), and *Footloose, Elements!* (Norwegian Cruise Line). Dalton dedicates his performance to his brother, Tyler. The Hartt School BFA. www.daltonbertolone.com

SARAH COLEMAN (*Ancestor, u/s Wednesday Addams*) Sarah is thrilled to be making her national tour debut! BU School of Theatre '24 alum. Favorite regional credits include *Rock of Ages* (Sherrie), *Fiddler on the Roof* (Chava), and *The Rocky Horror Picture Show* (Janet). Proud Jersey Shore native. Special thanks to Brian at HKA, Alison Franck, the Addams team, and love to Mom, Dad, and Grammy. Sarahcoleman. actor. IG: @sarah4coleman | TT: @sassaronio.

JOHN CUOZZO (*Swing, u/s Gomez Addams, u/s Mal Beineke, u/s Uncle Fester, Assistant Dance Captain*) John Cuozzo is a recent graduate of Wright State University with a B.F.A. in Acting. National Tour debut! Recent favorites: *Into The Woods* (Rapunzel's Prince), *Love's Labor's Lost* (Berowne), Edward Albee's *At Home at the Zoo* (Jerry), *On the Town* (Ozzie), and *A Doll's House* (Krogstad). Enjoy the show!! @johncuozzo

MAX DESANTIS (*Ancestor, u/s Uncle Fester, u/s Lurch, u/s Mal Beineke*) Max is thrilled to be making his national tour debut! Originally from the Bay Area, he graduated from the Boston Conservatory. Recent theater credits: *Grease* (Royal Caribbean), *Sound of Music* (Engeman), *Jersey Boys*, *Spelling Bee*, *Something Rotten!* (Woodminster). Current media: Denny's, Lenovo, Lyft, Ross. Instagram: max_desantis

LYNDELL FINGER (*Ancestor, u/s Pugsley Addams*) Lyndell is beyond excited to be making his national tour debut! Sending love to his amazing family and friends for their unconditional love and guidance. Many thanks to god and many hugs for his little brother KJ. "This is only the beginning for me and this one is for us KJ!" @lyndizzl

COLLIN HENDLEY (*Ancestor, gymnast/trampoline*) Collin Hendley is a NYC based Actor, Writer, and Composer. Select credits: Off-Broadway: *Brighter Than the Sun* (Chain Theater), *The Sleepover Show* (SoHo Playhouse), National Tour: *Don't Let The Pigeon Drive The Bus!* *The Musical!*, NYC/Regional: *Beatrice* (cell theater), *Of The Dream...* (American Theater of Actors), *Cinderella* (Argyle), *Godspell, Oklahoma!* (Prairie Rep). Rep: Resolute Artists Agency @crhendley

ALYSSA JACQUELINE (*Ancestor, u/s Wednesday Addams, Dance Captain*) Alyssa is thrilled to be an Addams! Favorite credits: National Tour of *Hairspray* (Shelley/us Penny), *A Chorus Line* (Diana), and *Mamma Mia!* (Sophie). Thanks to HR Artists Management and the entire Addams "family" for all their support! Barton Bunch — I love you endlessly. 1 Corinthians 16:14. IG: @alysajacqueline

SAMANTHA PARADA (*Ancestor, u/s Morticia Addams*) Samantha is thrilled to be making her National Tour debut! Virginia native and Wagner college graduate. Favorite credits: *Chicago* (Velma), *The Addams Family* (Morticia), *Cinderella* (Madame). She would like to thank her cast and crew, support system, mom, dad, and her husband Wil.

ALEX PLETIKAPICH (*Ancestor, u/s Lucas Beineke, u/s Pugsley Addams*) National Tour debut! Regional credits: *The Burnt Part Boys* and *Rock of Ages* (Mountain Theatre Co.), *Newsies* (Grandstreet Theatre), *Cabaret* (Cincinnati Actor's Studio). TV Credits: "The Gilded Age" BFA: Marymount Manhattan College. Many thanks and biggest hugs to family, friends, MMC and the team <3 @alexpletikapich.

SOPHIE RAPIEJKO (*Ancestor, u/s Alice Beineke, u/s Grandma*) Sophie Rapiejko is thrilled to be making her national tour debut! She is a recurring vocalist in NYC at 54 Below, Town Hall, and Kaufman Music Center. Other credits: *A Gentleman's Guide...* (Arizona Broadway Theatre), *A Christmas Carol* (Off Broadway), Sally in *You're a Good Man Charlie Brown* (Legacy Theatre) www.SophieRapiejko.com ig:@sophie.rapiejko.bushman

WHO'S WHO IN THE CAST

DELANEY SHEA (*Ancestor*) is thrilled to be making her national tour debut! She is a recent graduate from Oklahoma City University where she received her BA in theatre, directing and film. She sends love and thanks to her family, friends, and Mallory/Anthony for all their support. IG: @delaney.horton

GRETCHEN VOSBURGH (*Swing, u/s Morticia Addams, u/s Alice Beineke, u/s Grandma*) Gretchen's overwhelmingly grateful to join her first national tour! Colorado raised, NY trained she's a proud NYU Tisch Alum. For more see gretchenvosburgh.com and @g.vosburgh. Limitless thanks: Mom, Dad, Sammi, Fuzzy, MB, Claire, Michelle, B&A, Sam, Abigail, Vince, Scott, Nathan, Kathleen, Albert, the Atlantic Family and Antoinette. Enjoy the show!

ANDREW LIPPA (*Music & Lyrics*) Andrew Lippa's new epic choral work "Unbreakable" had its world premiere with The San Francisco Gay Men's Chorus on June 22nd and 23rd, 2018 in San Francisco with 300 artists onstage including Mr. Lippa. Ten more choruses across the country will present this new work in the next year and the original cast recording, produced by legendary producer Leslie Ann Jones, will be released by Ghostlight Records in November, 2018. He conducted the Royal Philharmonic Orchestra in a new production of his "A Little Princess" in concert in London at the Royal Festival Hall in May, 2018 to a sold-out crowd of nearly 3,000 people. His hit song "Evil Like Me" appears in Disney's "Descendants". Written for Kristin Chenoweth that soundtrack hit #1 on the "Billboard 200" album chart, #1 on the iTunes and Billboard soundtrack charts, has been viewed over 70 million times on YouTube and "Evil Like Me" was certified gold in 2017. On Feb. 1st, 2017, Lippa opened the new season of The American Songbook Series at Lincoln Center with his sold out concert of "Andrew Lippa and Friends." In 2016, he composed and conducted a world premiere piece for the international piano virtuoso Lang Lang and the Guangzhou Symphony Orchestra in Guangzhou, China. This new work, a 32-minute, 5-movement piece called "Rising Tide", was reprised later in 2016 and recorded in China. Lippa's epic Concept Opera "I am Anne Hutchinson/I Am Harvey Milk" had its world premiere at The Music Center at Strathmore in April of 2016 starring Kristin Chenoweth as Anne Hutchinson and Mr. Lippa as Harvey Milk. Summer 2016 saw the US premiere of "Life of the Party" — a musical compendium of

Mr. Lippa's career – produced by Theatreworks in Mountain View, CA and starring Mr. Lippa. Summer of 2017, Bay Street Theater in Sag Harbor, NY, presented the world premiere of *The Man in the Ceiling*. Based on Jules Feiffer's award-winning novel, this musical features a book by Mr. Feiffer and music and lyrics by Mr. Lippa. Directed by Jeffrey Seller (Tony-winning producer of "Hamilton") Mr. Lippa played the role of Uncle Lester in this production. Broadway credits include: Music and lyrics for *Big Fish* directed and choreographed by Susan Stroman; the Tony-nominated music and lyrics for the Broadway musical *The Addams Family* (directed by Jerry Zaks) as well as the music for Aaron Sorkin's Broadway play *The Farnsworth Invention* (directed by Des McAnuff). Other musicals include the Drama Desk award winning musical *The Wild Party* (book/music/lyrics); *A Little Princess* (music); John & Jen (music/book); *Asphalt Beach* (music and lyrics); and *You're A Good Man, Charlie Brown* (additional music/lyrics and arrangements). His epic oratorio for men's chorus, orchestra and soloists, *I Am Harvey Milk* has seen over 30 productions including Disney Hall and Lincoln Center. Awards: Tony and Grammy nominations; shared Emmy for Nickelodeon's "The Wonder Pets"; SFGMC Vanguard Award; The Gilman/Gonzalez-Falla Theater Foundation Award; ASCAP's Richard Rodgers/New Horizons Award; The Drama Desk Award; The Outer Critics Circle Award. A graduate of the University of Michigan, Mr. Lippa serves as president of the board of The Dramatists Guild Foundation (dggf.org). He was born in Leeds, England, grew up in suburban Detroit and is an ordained Interfaith minister. Explore all things Andrew Lippa at andrewlippa.com!

MARSHALL BRICKMAN (*Book*) Marshall Brickman, born in Brazil of American parents, attended New York public schools and the University of Wisconsin, where he received a double baccalaureate in both science and music. He entered show business first as a member of the folk group The Tarriers and then, along with John and Michelle Phillips, as one of The New Journeymen, a precursor of The Mamas and the Papas, whose flamboyant life-style and eccentric harmonies defined the post-folk era of tuning up, turning on and cashing in. Trading in his Gibson Mastertone 5-string banjo for an IBM Selectric, he secured a position as writer/director on "Candid Camera," America's original reality show, a wildly successful early

experiment in monetizing public humiliation, for which he hereby apologizes. Fleeing “Candid Camera,” Brickman found solace as head writer for Johnny Carson, whose late-night show on NBC emanated from ironically named Radio City in midtown Manhattan, a stroke of luck that allowed him to stay as far from Los Angeles as possible while still retaining U.S. citizenship. In 1970 he left NBC to become producer/head writer of Dick Cavett’s late-night show on ABC. Among the many ground-breaking events that Cavett introduced into the late-night formula was the night presidential hopeful George McGovern was interviewed by last-minute guest host Bill Russell of the Boston Celtics. The result was fascinating, not unlike watching a python ingesting a small cow. In the meantime he had started a collaboration with Woody Allen, a young comic who opened for the Tarriers at Fred Weintraub’s Bitter End, the legendary Bleeker Street coffee house that provided exposure to upcoming talent in music and comedy. They worked at odd hours on screenplays and material for Allen’s early TV appearances, an experience like no other. Brickman watched Mr. Allen negotiate both the creative and practical issues confronting an artist working in a commercial environment; he learned things that can’t be taught and never laughed as hard as the time spent roaming the city with a certified genius discussing art, politics, women, the state of the business, and why Durwood Kirby was considered funny, even by people with college degrees. Mr. Brickman’s film work as author (or co-author with Woody Allen) includes *Sleeper*, *Annie Hall* (Academy Award), *Manhattan*, (AA nomination) and *Manhattan Murder Mystery*. As film writer/director: *Simon, Lovesick*, *The Manhattan Project*, *Sister Mary Explains it All*. In television: *The Tonight Show* with Johnny Carson (head writer, 1967-’70); *The Dick Cavett Show* (head writer/co-producer, 1970-’72). Brickman’s recording (with ex-Tarrier Eric Weissberg) of the soundtrack of *Deliverance*, released in 1970, contained the surprise hit “Dueling Banjos,” achieved platinum status, and remains a healthy seller over 40 years later. His first foray into musical theater resulted in *Jersey Boys*, which won the Tony, Olivier, Helpmann, Grammy and many other awards worldwide, is in its twelfth year on Broadway, has been seen by twenty million people worldwide and is currently the 10th-longest running show in the history of Broadway. The film version of the show was directed by Clint Eastwood. Mr. Brickman’s other theatrical efforts include *Turn*

of the Century, which played to capacity houses in Chicago, and *The Addams Family*, starring Nathan Lane and Bebe Neuwirth, which ran for two years on Broadway and to date has had over four thousand first and second tier productions internationally. In addition to his work in film and theater, Mr. Brickman has published in *The New York Times*, *The New Yorker*, *Playboy* and other periodicals. He is the 2006 recipient of the Writers’ Guild of America Ian McClellan Hunter Award for Lifetime Achievement. His current project is a stage musical celebrating the life of western star Roy Rogers, scheduled to premiere late in 2017. After over 40 years in the business, trying to balance talent with opportunity and watching the careers of colleagues, both successful and less so, he can reduce what he’s learned into one succinct bit of wisdom: above all, it’s important to be lucky.

RICK ELICE (*Book*) co-wrote *Jersey Boys* (winner 2006 Tony Award, 2007 Grammy Award and 2009 Olivier Award for Best Musical) with the great Marshall Brickman; *The Addams Family*; *Peter and the Starcatcher* (winner of five 2012 Tony Awards); and *The Cher Show* (currently on tour in the UK). In the pipeline: *The Princess Bride* for Disney; *Smash* for Robert Greenblatt, Neil Meron and Steven Spielberg, music and lyrics by Marc Shaiman and Scott Wittman, directed by Susan Stroman. Rick is also adapting Sara Gruen’s novel *Water for Elephants*; the popular film, *Silver Linings Playbook*; and writing an original musical, *Treasure*, with 2011 Ed Kleban Award-winner Benjamin Scheuer. Rick’s book, *Finding Roger, An Improbably Theatrical Love Story*, is published by Kingswell. Heartfelt thanks to those whose theatre work makes him grateful for the day he was born: Sondheim, Stoppard, Bennett, Prince, Fosse, Robbins, Nichols, Nunn, Laurents, Stone, Taymor, Papp, Schumacher, Schneider, David, Strong, Gaudio, Valli, McAnuff, Trujillo, Timbers, Coyne, Brickman, and, eternally, Roger Rees. Rick thinks about them a lot. He never thought about Jersey much. He does now.

ANTOINETTE DIPIETROPOLO (*Director & Choreographer*) Choreographer for Musical Theater, Concerts, Immersive Experiences, Movies, TV and Private events for Global brands and Stars around the world. National Tours, International Events and Regional work include; *The Cher Show*, *Annie*, *Fame*, *Jersey Boys*, *The Music Man*, *Mamma Mia*, “MasterChef Live”, “America’s Got Talent Live”,

WHO'S WHO IN THE CAST

Cirque Musica Wonderland, Big Apple Circus (2014,2015,2017), *Querida* Official tribute to Juan Gabriel, *Nonsense, Saturday Night Fever, Chicago, Jesus Christ Superstar, Ragtime* (Winner Best Choreographer, Triangle Theatre Award), *Legally Blonde, Hairspray, Grease, The Full Monty, Miracle on 34th Street, The Producers, A Christmas Story, Evita, South Pacific, I Love You, You're Perfect, Now Change, Scooby Doo Live, Veggie Tales Live, Powerhouse, With Glee, THE RIDE* in New York City, *Pepsi/Grubhub/Seamless Super Bowl* promotion, *Disney Plus Wizard of Paws, American Girl Live in Concert, New Years Eve Time Square USO, First choreographer* in the country of Saudi Arabia. www.AntoinetteDiPietropolo.com follow me for updates @antoinettedid

EMILIE RENIER (*Associate Director & Associate Choreographer*) Tours: *Company, The Cher Show, Cinderella*, and both the Nat'l and Internat'l *Beauty and the Beast* (u/s Belle, DC). Regional: *Chess, Mary Poppins, Seven Brides for Seven Brothers, Singin' in the Rain, Dirty Rotten Scoundrels*, and many others. New York: *Dear World (Encores! at City Center)*. Love to Garrett and Grimsly.

RANDEL WRIGHT (*Set Designer*) With The Addams Family, Randel continues his design of scenery for Big League Productions, preceded by *Hello Dolly, Guys And Dolls, Legally Blonde, American In Paris, South Pacific and Little Women*. Prior, he designed *Singin' In The Rain* (national), *Unsinkable Molly Brown* (national / Debbie Reynolds), *Pal Joey* (Joel Grey), *Pal Joey* (Dixie Carter), *The Wiz* (Stephanie Mills), *I Do, I Do* (Sandy Duncan), *Batteries Not Included* (Jamie Hammerstein co-author & dir.). Beyond theater, he also designed The Coca Cola Centennial, The Dr. Pepper Centennial and The Yale University Tercentennial.

CHARLES FORD (*Lighting Designer*) is the visionary force behind Vue Show Design Group, where he redefines the boundaries of production design with innovative lighting and staging solutions. With a flair for creating immersive experiences, Charles has transformed stages into dynamic canvases, crafting masterpieces that elevate performances into unforgettable visual spectacles. His work with renowned artists such as Prince, H.E.R., Carly Rae Jepsen, and Young the Giant has cemented his reputation as a luminary in the lighting industry. Whether it's a high-energy concert or an elegant corporate event, Charles consistently delivers

bespoke, cutting-edge designs that captivate and inspire. In addition to his work with world-class musicians, Charles's designs have breathed life into everything from industrial shows to theatrical productions. At Vue Show Design Group, he continues to push the limits of creativity, using his deep knowledge of visual technology to create lighting experiences that are as thought-provoking as they are visually stunning. For The Addams Family musical tour, Charles brings his passion for avant-garde stylization and theatricality, ensuring that each moment on stage is as delightfully eerie and enchanting as the beloved characters themselves. Instagram: @cfordlites09 Website: www.Vueshowdesign.com

THOMAS FOSNOCHT (*Music Director & Supervisor*) Thrilled to be back with Big League for The Addams Family! Recently Music Supervisor/Conductor for the 2024 National tour of *Little Women*. He co-created a new musical with David Smith, *Little Things*, recently featured in a 2024 NYC workshop at Playhouse 46. He continues to work in and around the New York/Philadelphia area as a Music Director and Pianist for regional productions. His favorite shows include *Company* (Justin Guarini), *Mame* (Andrea McCardle), and *Clue* (Sally Struthers) at Bucks County Playhouse, *Annie* (Wanda Sykes) at Media Theatre, and *The Story of My Life* (Rob McClure) at Delaware Theatre Company. Tom maintains a private studio, specializing in contemporary piano and voice techniques. He also served as Vocal Director for Royal Caribbean Cruise Line, highlights include The Effectors.

ANTHONY LOPEZ (*Sound Design*) is a Southern California native who has worked with Big League since 2019. Prior credits include: *A Christmas Story: The Musical* (A2 2019/2021, Sound Supervisor 2023), *Legally Blonde* (A2 2019, Head of Audio 2023), *An American in Paris* (Head of Audio 2022), *South Pacific* (Head Audio 2022), *A Chorus Line* (Head Audio, Japan 2022), and *The Cher Show* (Associate Sound Designer 2023). He has also worked countless movie premieres and special events. He is excited to continue mixing and designing productions. Instagram @anthonylopez841

WHO'S WHO IN THE CAST

TIMOTHY RIGGS (*Sound Design*) Women of Note: NYMTF 2016. ZACH Theatre: *Luna, Into the Woods, A Year with Frog and Toad*, PPC Showcase. Associate Design - Mother Road: San Diego Rep, *A Christmas Story The Musical Natl. Tour* 2016. All love to Oliver, Shae and Sherman XO

RILEY GIBSON (*Production Stage Manager*) Riley Gibson is excited to make his PSM debut with *The Addams Family!* Touring Credits: *Elf, Little Women, Peter Pan*; Regional Credits: Company Management (2023) & Production Management (2024) at The REV Theatre Co, Auburn NY. A massive thank you to my family, friends, and always expanding support system. @riley_gibson

ALISON FRANCK, C.S.A (*Casting Director*) has been a casting director in NYC for over 25 years. She started as an assistant for many Broadway Productions, then she worked in film/TV for several years, then from 2000-2010, she was the Resident Casting Director at Paper Mill Playhouse. In 2011 she joined the team at Liz Lewis Casting Partners, where she cast commercials, voiceovers, film/TV, and theatre. Alison now runs her own company, Franck Casting, where she has cast several tours of well-known musicals including *Legally Blonde, Dreamgirls, An American in Paris, A Christmas Story: The Musical, A Chorus Line, The Simon and Garfunkel Story Live and Little Women, the Musical & The Cher Show*. www.franckcasting.com

WENDY J. CONNOR / DONNA FIEGEL (*Tour Press & Marketing*) TRUE Marketing is a full-service entertainment marketing firm based in Orlando, Florida that boasts a full Marketing and Public Relations Consulting Team, Graphic Design Department, and Social Marketing Strategy Team. Team TRUE has worked on national tours of *A Christmas Story - The Musical, An American In Paris, Legally Blonde, A Chorus Line, My Fair Lady, Spring Awakening, The Producers, 42nd Street, Dreamgirls, South Pacific, Guys and Dolls, and The Wizard of Oz*. www.TeamTRUE.com

BROADWAY & BEYOND THEATRICALS (*Tour Booking*) Led by founders and industry veterans Tracey McFarland, Victoria Lang, and Ryan Bogner, Broadway & Beyond Theatricals (BBT) is dedicated to the distribution and creation of quality branded theatrical content for traditional and non-traditional venues throughout North America and beyond. BBT's

booking division delivers quality productions tailored to a venue's size and budget; the Content division offers commercial producers and IP stakeholders strategic management, consulting services and distribution solutions while producing quality theatrical content in New York and for the road. On Broadway as Producer: *The Cottage, The Kite Runner*. Broadway tours as agent: *The Cher Show, The Kite Runner, The Addams Family Musical, An American In Paris, Legally Blonde, Million Dollar Quartet Christmas* & and more. www.bbtheatricals.com

BIG LEAGUE PRODUCTIONS / DANIEL SHER (*Executive Producer and General Management*) is celebrating its 30th season of producing and general managing Broadway tours of shows and attractions throughout the world. Early highlights were collaborations with Disney on *Elton John and Tim Rice's Aida* (US Tours, Taiwan, and China) and with Cameron Mackintosh on a new production of *Miss Saigon*. Also, the Tony®-Award winning Broadway revival of *42nd Street* and Susan Stroman's Broadway production of *Meredith Willson's The Music Man*. Others: *Footloose* (Las Vegas, US Tour), *Titanic, 1776, Peter Pan, A Funny Thing Happened on the Way to the Forum* starring Rip Taylor, *Blast!, The Who's Tommy* (US Tour, South America, Europe, and Japan), *Ain't Misbehavin'* with Ruben Studdard, and the First National Tour of *Chitty Chitty Bang Bang*— flying car and all. More recent: *The Producers* (Susan Stroman's original work), *Hello, Dolly!* with Sally Struthers, *Guys and Dolls, My Fair Lady* (US Tour and China premiere), original hip-hop dance show *Groovaloo* (Off-Broadway), *Dr. Seuss' How the Grinch Stole Christmas! The Musical* (10 US Tours, Grand Ole Opry, and Madison Square Garden), *Dreamgirls* (US Tour, China premiere, Japan), *Hair* (US Tour and Japan), *Bring it On* (US Tour and Japan), and *Legally Blonde* (US Tours, China premiere, Singapore). More recently, *A Chorus Line* toured the US and Japan, and was seen in China for the first time. Post-pandemic, Big League remounted its acclaimed tour of *An American in Paris*, a new production of *South Pacific, Legally Blonde*, and continued touring its flagship production of *A Christmas Story The Musical*. Current work includes *The Cher Show* national tour and a new touring production of *Little Women*. Future work includes a new touring production of *Meredith Willson's The Music Man*.

STAFF FOR THE ADDAMS FAMILY
2025 NATIONAL TOUR

PRODUCER AND GENERAL MANAGER

Big League Productions, Inc.

President Daniel Sher
General Manager Zach Krohn
Associate Producer Sophie Whitfield
Office Manager and
General Management Assistant Koy Peerenboom
Management Consultant Brent Watkins
Travel Consultant Gina Willens
Booking Consultant L. Glenn Poppleton

Accounting Neuschatz, Neuschatz,
Herman & Hanke, LLP
Insurance Edgewood Partners Insurance Center
Banking JPMorgan Chase & Co.
Payroll Checks & Balances Payroll
Travel Road Rebel Global

TECHNICAL & CREATIVE STAFF

Company Manager Shawn Passero
Production Stage Manager Riley Gibson
Associate Choreographer &
Associate Director Emilie Renier
Associate Lighting Designer Brian Helming
Lighting Supervisor Paul Gould
Production Sound Joseph Roma
Production Electrician Martin Cox
Keyboard Programmer Jim Harp
Assistant Company Manager &
Assistant Stage Manager Helen Thornton
Head Carpenter Carson Ayres
Assistant Carpenter / Flyman Nathan McKinney
Assistant Carpenter / Set Electrics Travis Austin
Head Electrician Kamryn Neffle
Assistant Electrician / Spot Op Ava Ansong
Head Sound Jorge Guerra
Assistant Sound Ariana Gomez
Head Props Silver Burgess
Head Wardrobe Carly Peterson
Head Hair/Makeup Ashley Sirlin
Associate Music Supervisor Sam Groisser
Costume Package Coordinator Liv Kurtz

TOUR BOOKING

Broadway & Beyond Theatricals

Tracey McFarland Ryan Bogner Victoria Lang
Jaymi Gilmour Megan Savage Kelsey Young
Monica Smith Gauri Mangala Mary Alex Daniels

**BROADCAST ADVERTISING &
MEDIA PRODUCTION**

Fresh Produce Productions

Frank Basile

TOUR PRESS & MARKETING

TRUE Marketing

Wendy J. Connor Donna Fiegel

CREDITS

SCENERY PROVIDED BY BB PROPS, CREE8 STUDIOS, DALLAS
STAGE SCENERY COMPANY, ROSE BRAND, SCENIC SOLUTIONS
LLC, WILLIAM LIDDERDALE
LIGHTING PROVIDED BY INTELLIGENT LIGHTING SERVICES LTD
SOUND PROVIDED BY BIG LEAGUE PRODUCTIONS &
DNB DESIGN
TRUCKING PROVIDED BY JANCO
BUSING PROVIDED BY PEAK TOURING AND LAMOILLE VALLEY
HOTELS ARRANGED BY ROAD CONCIERGE

THE ADDAMS FAMILY REHEARSED AT RIPLEY-GRIER STUDIOS
305 W 38TH STREET, NEW YORK NY

www.theaddamsfamilytour.com



Backstage and Front of the House Employees
are represented by the International Alliance
of Theatrical Stage Employees (or I.A.T.S.E.).



The Director and Choreographer are members of
the STAGE DIRECTORS AND CHOREOGRAPHERS
SOCIETY, a national theatrical labor union.



United Scenic Artists • Local USA 829
of the I.A.T.S.E. represents
the Designers & Scenic Artists
for the American Theatre

THE USE OF ANY RECORDING DEVICE, EITHER
AUDIO OR VIDEO, AND THE TAKING OF PHOTOGRAPHS,
EITHER WITH OR WITHOUT FLASH, IS
STRICTLY PROHIBITED.

PALACE THEATER STAFF DIRECTORY

BOARD OF DIRECTORS

Martin G. Morgado, <i>Chair</i>		Shae Apland, <i>Marketing Committee Chair</i>	
Michael O'Connor, <i>Treasurer/Vice Chair</i>		Mary Rosengrant Chiappalone, <i>Development Committee Chair</i>	
Jack Senich, <i>Vice Chair</i>		Dr. Peter Jacoby, <i>Past Chair</i>	
Dora Bennett, <i>Secretary</i>			
Vanessa Aguilar	Carolyn Highsmith	Sandra	Christopher Rempfer
Kathleen Brochhausen	J.C. Hopkins	Martinez-McCarthy	Felix Rodriguez
Mary Grace Cavallo	Dr. Scott Kurtzman	Lynnette Letsky	Timothy Rourke
Beth Devino	Dave Martin	Piombo	Matthew Tryforos
Joseph D'Orso		Giuseppe "Joe" Pisani	

BOARD OF ADVISORS

Carolyn F. Cicchetti	Timothy C. Moynahan	James C. Smith	Sandra Vigliotti-Senich
----------------------	---------------------	----------------	-------------------------

CHIEF EXECUTIVE OFFICER

Frank Tavera

ADMINISTRATIVE STAFF

Ana Dec, *Programs & Ticketing Officer*
Dave Flowers, *Chief Production Officer*
Debbie Forchielli, *Volunteer Coordinator*
Denise Hinkelman, *Box Office Coordinator & Development Services*
Brian Kimmey, *Design & Digital Manager*
Natalie Lawlor, *Development Officer*
Tina Lubus, *Finance Manager*
Meg Luddy, *Director of Operational Events*
Sheree Marcucci, *Director of Special Projects & Curated Programs*
Emanuel Neri, *Building Porter*
Andrea Nyquist, *Marketing, Sales & Public Relations Officer*
Stephanie Panico, *Special Events Manager*
Deirdre Patterson, *Box Office Manager*
Lindsey Rosa, *Development Coordinator*
Sandra Rosa, *Finance Officer*
Matt Sivilla, *Building Mechanic*
Lisa Suzio, *Director of Hospitality*
Ashley Sweet, *Operational Events Coordinator*
Peggy Terhune, *Communications Manager*
Sydney Wyatt, *Digital Marketing Coordinator*

TECHNICAL STAFF

Dave Barata, <i>Head Sound Engineer</i>	Karin Lopez, <i>Wardrobe Mistress</i>
Andrew Bynum, <i>Head Electrician</i>	Catherine Moore, <i>Properties Manager</i>
Gardner Friscia, <i>Head Carpenter</i>	Ken Owens, <i>Head Flyman</i>

HOUSE MANAGERS

Donna Cameron	Crystal LaBonte	Carol Merola
---------------	-----------------	--------------

2024-2025 CORPORATE PARTNERS

CORPORATE SPONSORS



CORPORATE MEMBERS

Aeroswiss LLC
Albert Brothers
American Heating Service
Bunker Hill Pharmacy
Carpin Manufacturing
Coil Pro Machinery, Inc.
The Corbo Group
Demsey Manufacturing Company
Diversified Building Services

Gaffney, Bennett & Associates, Inc.
Hubbard-Hall Inc.
Jaci Carroll Staffing
L.F. Powers Co., Inc.
Marion Manufacturing
Metallon, Inc.
Montagno Insurance Inc.
Moore, O'Brien & Foti
Nanavaty Davenport
Studley White LLP

Atty. Thomas & Janine Pettinicchi
Republican-American
Savings Bank of Danbury
Secor, Cassidy & McPartland, PC
Suzio-York Hill
Tomasso Group
TORRCO
Tracy Driscoll Insurance &
Financial Services

INSTITUTIONAL SUPPORTERS

Adam Broderick Salon & Spa
American Savings Foundation
Arts & Culture Collaborative —
Waterbury Region
Bank of America
Barter Business Unlimited
Cavallo's Imported Italian Foods
Central CT
Chambers of Commerce
City of Waterbury,
Arts & Tourism Commission
CompuMail
Connecticut Community
Foundation
Connecticut Public Radio
Corporate Display Specialties
David, Helen & Marian
Woodward Fund
DNR Laboratories
Emily's Catering Group
Eversource Energy Foundation

Fascia's Chocolates
Felix Manuel Photography
Frank Pepe Pizzeria Napoletana
Frankie's of Reidville Drive
George A. & Grace L. Long
Foundation
Gracewell Productions
Graham's Florist LLC
Greater Waterbury YMCA
Harry's Party Rental
LaBonne's Markets
Michael's Greenhouses
Naugatuck Valley
Ear, Nose & Throat
New England
Arts & Entertainment
The Next Street
Selim & Linda Noujaim
Onyx II Fine Jewelers
Pepsi Cola of Bristol

Perry's Cleaners
Prospect Printing Company
Republican-American
Mary Ellen & Tim Rourke
Susan Suhr & Marina Viale
Sweet Maria's
Thomaston Savings Bank
Thomaston Savings Bank
Foundation
Tower Design & Print LLC
United Way of Greater Waterbury
Verbena Caterers
The Village at East Farms
Waterbury Regional Chamber
Waterbury Symphony Orchestra
Watertown Foundation
WATR Radio 1320 AM
WORX
WSHU Public Radio
WTNH News Channel 8

The Prospect Printing Company

16 Waterbury Rd.
Prospect, CT 06712

Tel: 203.758.6007
Fax: 203.758.3349

www.prospectprinting.net
info@prospectprinting.net

**High Quality Offset
and Digital Printing**

Brochures • Letterheads
Business Cards • Envelopes
Banners • Signs • Posters
Promotional Products
Variable Data & More!



Pepsi Cola
of Bristol

Proudly Supports the
Palace Theater



The Brands You Love.
Locally Owned & Operated

110 Corporate Drive, Southington, CT 06489
www.pepsicolabristol.com
(860) 628-8200

We're serious about math **BEING FUN!**



Kids who learn to love math gain confidence for a successful year. Mathnasium students learn from highly trained instructors in a fun and engaging environment. As their skills increase, they grow in confidence not just in math, but in all their subjects.

Mathnasium of Naugatuck Valley
203-757-1234
Ages 6 - adults
www.mathnasium.com/naugatuckvalley

Contact Us for a Free Assessment
www.mathnasium.com

MATHNASIUM
The Math Learning Center



TOMASSO GROUP

Proud to support
the **PALACE THEATER**, and
proud to have been part of its renovation!

BEFORE



AFTER

One Liberty Square, New Britain, Connecticut 06051

Ph: (860) 224-9977

TomassoGroup.com



Powered by Ameriprise Financial

JOSH BRODER

Forbes Best-In-State Wealth Advisors, 2024



START
PLANNING
FOR YOUR
TOMORROW
TODAY.



203.823.9114 x319



joshua.m.broder@ampf.com



1781 Highland Ave. Suite 207
Cheshire, CT 06410

At Centurion Wealth Management, we strive to inspire confidence, simplify life, and reduce stress. As your trusted advisor, we provide personalized advice to help you achieve your goals and dreams.

LEARN MORE: WWW.CENTURIONWEALTHMGNT.COM

FPR

FULL POWER RADIO



Shangri-La

CONNECTICUT'S NEWEST
CANNABIS RETAILER



VISIT
US!

NORWALK

430 MAIN AVE

75 CONNECTICUT AVE

PLAINVILLE

359 NEW BRITAIN AVE

WATERBURY

53 INTERSTATE LN

DO NOT USE CANNABIS IF YOU ARE UNDER TWENTY-ONE YEARS OF AGE.
KEEP CANNABIS OUT OF THE REACH OF CHILDREN.

PUT YOUR BRAND IN THE SPOTLIGHT!

ADVERTISE WITH US!

INTERESTED IN A PROGRAM AD?

Contact Natalie Lawlor
203.346.2009 • lawlor@palacetheaterct.org



HERE, WE'RE HUSKIES

 High-Quality Education

 Affordable

 Close to Home

UConn Waterbury and the Osher Lifelong Learning Institute celebrate more than two decades at the heart of downtown.

#9 4-Year, Public University for Return on Investment

(Georgetown University, 2022)

UConn
WATERBURY



VOTED BEST INSURANCE AGENT CONNECTICUT

VOTED BEST INSURANCE AGENCY Republican American

Celebrating 60 years of serving clients with care and dedication!

As proud sponsors of the Palace Theater, we're dedicated not only to our clients but also to the community we serve. Experience the difference of working with a company that values your peace of mind.



Kim Fitzgerald
2024 Fortune Five Star Legend



Mark Montagno

Montagno Insurance Inc.
344 Robbins St. Waterbury, CT 06708

 InsuranceQuotesCT.com

203.574.5211

 @Montagnoinsurance

SERVICING ALL OF CONNECTICUT

B Bourassa
catering & events

You're just one call away from turning dreams into reality!

As a full service caterer, we are ready to help you customize your special event to fit your style & taste.

We offer imaginative & seasonally inspired menus, gracious service & a comprehensive range of event planning options.



Info@bourassacatering.com
203.269.9266
www.bourassacatering.com

OPEN. ACCURATE. FAST.



**Welcome to New England's
first high-field OPEN Velocity MRI System.
It provides the latest technology and
highest imaging quality in less time with
the comfort of a wide open design.**



WaterburyHEALTH

Your Imaging Team at Valley Imaging Partners, LLC

690 Main Street South, Suite 7LL | Southbury, CT | 203.755.OPEN (6736)

We learned a lot in 70 years



Waterbury Palace Theater Marquee. Completed October, 2006

Like how to build powerful images.
We can build yours too.



ABC SIGN
CORPORATION



POWER Your Next Event

WITH THE EVENT **EXPERTS**

- ⚡ Audio & Video Production
- ⚡ Lighting & Staging
- ⚡ DJs & Entertainers
- ⚡ Bands & Musicians
- ⚡ Decor & Florals
- ⚡ Photography
- Corporate Events ⚡
- Non-Profit Events ⚡
- Galas & Fund-Raisers ⚡
- Parties & Celebrations ⚡
- Weddings & Family Events ⚡
- Graduations & More ⚡

*Proud to be the Official Event Services Partner
of the Palace Theater!*



Official Event Production Partner to:



...and serving as A/V Production Partner for the
Travelers Championship since 2010!



Cheshire, CT

www.PowerstationEvents.com

203-250-8500

American Standard



TORRICO | BATH & KITCHEN SHOWROOM

OFFERING DECORATIVE PLUMBING & LIGHTING,
VANITIES, CABINET & DOOR HARDWARE.

VISIT OUR BEAUTIFUL WATERBURY SHOWROOM
100 NORTH ELM STREET

Since 1917 • www.TorrcoDesignCenter.com • 203.756.3641

STAMFORD • FAIRFIELD • DANBURY • NEW HAVEN • EAST WINDSOR • WATERBURY



96%*



**Personal Banker Relationship
Satisfaction Rate**

*Rivel Research Group

Because we build lifetime relationships.

Your Ion Banker partners with you to understand your business objectives and service your needs with tailored solutions.

See why 96% of Ion Bank business customers are satisfied. Experience the difference with us.

Visit a branch or call a
Business Banker today!

ion BANK™

[IonBank.com](https://ionbank.com) • 203.729.4442

Member FDIC