

# SHOW NOTES

PALACE THEATER PROGRAM BOOK

# *Tina*

THE TINA TURNER MUSICAL

November 2025



# Let's take on tomorrow, TOGETHER.

When the time is right for you,  
Webster is ready to help you  
keep moving forward.

**WebsterBank**



Member Webster Bank, N.A. Webster, Webster Bank, Webster Investments, the Webster Bank logo, and the W symbol are registered trademarks of Webster Financial Corporation. © 2025 Webster Financial Corporation. All Rights Reserved.

# LET YOUR EDUCATION TAKE CENTER STAGE



Post University proudly supports the Palace Theater and the cultural enrichment it brings to the Greater Waterbury community.

Explore our programs and learn how Post can support you at **Post.edu**.





**Celebrating 60+ years of serving clients with care and dedication!**

As proud sponsors of the Palace Theater, we remain committed to our clients and the community we serve. Voted Best Insurance Agency by Republican American Readers and recognized among Connecticut's Five Star Insurance Professionals, we take pride in delivering personalized service and trusted coverage.

Experience the difference of working with a company that values your peace of mind.



**Kim Fitzgerald**  
Agency Principal - Five Star Insurance Professional



**Mark Montagno**  
Founder

**Montagno Insurance Inc.**  
344 Robbins St, Waterbury, CT 06708

InsuranceQuotesCT.com **203.574.5211**

@Montagnoinsurance **SERVICING ALL OF CONNECTICUT**



**B&Z MANAGEMENT PROUDLY SUPPORTS THE PALACE THEATER**

**LOCALLY OWNED AND OPERATED DUNKIN' LOCATIONS IN THE GREATER WATERBURY AREA**



**MERIDEN  
NEW HAVEN • WALLINGFORD  
MILFORD • DERBY**

**WWW.SUZIOYORKHILL.COM  
888-SUZIOCO • 888-789-4626  
203-247-8421**



*Expert cancer care*  
**RIGHT HERE**

**THE HAROLD LEEVER REGIONAL CANCER CENTER**  
(203) 575-5555 • leevercancercenter.org



# Martinis & mistletoe

**\$75**  
TICKETS

**Toast the Holiday Season**  
with friends, festive martinis & light fare

**Dec 3, 2025 | 6pm**



## MARTINIS BY:

1754 House | Brass City Bistro | D'Amelio's | Jesse Camille's | Ria's  
Sans-Souci | Signatures | The Tap House | Viron Rondo Osteria

Entertainment by: Timmy Maia

Food by: Emily's Catering Group



Pepsi Cola  
of Bristol

Proudly Supports the  
Palace Theater



**The Brands You Love.**  
Locally Owned & Operated

110 Corporate Drive, Southington, CT 06489  
www.pepsicolabristol.com  
(860) 628-8200



**Optum**



Four-Star  
Quality Rated  
FROM THE CENTERS FOR  
MEDICARE AND MEDICAID  
SERVICES (CMS)



We Continue to  
Provide You With  
Award-Winning Care



Saint Mary's Hospital  
Trinity Health

We See All of You™

TrinityHealthOfNE.org/Playbill

# We learned a lot in 70 years



Waterbury Palace Theater Marquee. Completed October, 2006

Like how to build powerful images.  
We can build your's too.



[ABCSIGNCORP.COM](http://ABCSIGNCORP.COM)



## For over 175 years, we've been at the heart of Waterbury.

As a 6<sup>th</sup> generation family business,  
we believe in expanding possibilities  
for our communities through  
volunteer work, direct investment  
and environmental stewardship.



Learn about our legacy.





**McCall Behavioral Health NETWORK**

## Visit our Whole Health Center in Waterbury

- Primary Care Services
- Substance Use Treatment
- Mental Health Support
- Child & Adolescent Services
- On-Site Pharmacy



860.496.2100  
mccallbhn.org

# ENERGYresources

Profit Through Efficiency



EV CHARGING STATIONS



LED LIGHTING SOLUTIONS



MECHANICAL EQUIPMENT



SOLAR ENERGY



REFRIGERATION OPTIMIZATION



STEAM OPTIMIZATION



WEATHERIZATION & PIPE INSULATION

**Christina D'Amato**

Phone  
860-655-0872

Email  
cdamato@energyresourcesusa.net



Reach out to schedule a no cost, no obligation energy assessment and see how your business or nonprofit can reduce operating costs

[www.energyresourcesusa.net](http://www.energyresourcesusa.net)



# HIGHSTREET

Insurance & Financial Services

Highstreet Insurance & Financial Services, offers professional guidance and a variety of products to help you meet your individual and business needs. Following is a list of products we have available:

Personal Insurance	Business Insurance	Employee Benefits	Financial Service
~ Auto	~ Property	~ Individual Health	~ Traditional IRA
~ Home / Condo / Renters	~ Liability	~ Group Health	~ Roth IRA
~ Umbrella	~ Workers Compensation	~ Medicare Advantage	~ Simple IRA
~ Watercraft/Yachts	~ Auto	~ Medicare Supplement	~ Annuities
~ Motorhomes	~ EPLI	~ 401k Plan	~ Term Life
~ Antique Auto	~ Contractor Bonds	~ Dental	~ Whole Life
~ Motorcycle	~ Construction Equipment	~ Life Insurance	~ Universal Life
~ Waterfront Property	~ Errors and Omissions	~ Short and Long Term Disability	~ Long Term Care
~ High Valued Properties	~ Directors and Officers	~ Voluntary Benefits	~ 529 College Planning
~ Worksite Programs	~ Cyber	~ HSA / FSA / HRA	
		~ COBRA Services	

Highstreet Insurance & Financial Services  
10 Main Street, 4<sup>th</sup> Floor, Bristol, CT. 06010  
860.589.3434  
[www.hsip.com](http://www.hsip.com)

Services offered through Registered Representatives of Cambridge Investment Research, Inc., a broker-dealer, member of FINRA / SIPC. Advisory services through Charismatic / iCapital, a registered Investment Advisor. Cambridge and Charismatic / iCapital are not affiliated.

**See possible.**

We're serious about math **BEING FUN!**



**Kids who learn to love math gain confidence for a successful year.** Mathnasium students learn from highly trained instructors in a fun and engaging environment. As their skills increase, they grow in confidence not just in math, but in all their subjects.

Mathnasium of Naugatuck Valley  
203-757-1234  
Ages 6 - adults  
[www.mathnasium.com/naugatuckvalley](http://www.mathnasium.com/naugatuckvalley)

Contact Us for a Free Assessment  
[www.mathnasium.com](http://www.mathnasium.com)

**MATHNASIUM**  
The Math Learning Center

Landmark Architects is a proud sponsor of  
the Palace Theater!



www.landmarkarch.com (860) 346-1333  
100 Riverview Center, Suite 204, Middletown, CT 06457

***Building Toward The Future***

**OPEN. ACCURATE. FAST.**



Welcome to New England's  
first high-field OPEN Velocity  
MRI System. It provides  
the latest technology and  
highest imaging quality in  
less time with the comfort of  
a wide open design.



**WaterburyHEALTH**

Your Imaging Team at Valley Imaging Partners, LLC

690 Main Street South, Suite 7LL | Southbury, CT | 203.755.OPEN (6736)



# Matt thrIVES

**The dream of homeownership  
is now within reach.**

Buying your first home is a milestone moment! We want to help you celebrate this accomplishment by making it easier for first-time homebuyers to get affordable financing. Contact us today to learn more and apply.

 **IVES BANK**  
ivesBank.com | 844.723.2265

 **EQUAL HOUSING  
LENDER**  
Member FDIC | NMLS #763547

# LETTER FROM THE CHAIR

As the current Chair of the Board of Directors of the Palace Theater, it is my great honor to welcome you to this beautiful, historic theater and the 2025–2026 Webster Bank Broadway Series.

Committed to furthering the theater's continued success, the Palace Board of Directors is currently working on a new three-year Strategic Plan, which will define the programmatic, financial, and organizational goals for the theater and its leadership. With a focus on further developing lasting community relationships and continuing to offer innovative programming, the objective of the plan is to help ensure the financial sustainability and growth of the Palace for years to come.



As always, the theater's mission to entertain, educate, and provide a community gathering place continues to guide decision-making at all levels. Our artistic success and economic stability lay the groundwork for giving back to our community, through partnerships with other local arts organizations, student ticket programs, and our affiliations with the Waterbury Arts Magnet School and other educational institutions.

On behalf of the Board of Directors and the staff, we thank you for joining us and supporting the arts, whether you are a long-time supporter or a first-time visitor.

Welcome to the Palace!

Sincerely,

A handwritten signature in black ink, appearing to read "Martin Morgado". The signature is fluid and cursive, written over a white background.

Martin Morgado  
Chair of the Board of Directors



**Gaffney, Bennett  
and Associates, Inc.**  
Government Relations and Political Consulting

---

One Liberty Square  
New Britain, CT 06051  
860-229-0301

**EBM**  
**IT Solutions Provider**



Trusted, family-run business for  
over 50 years.

**Cybersecurity &  
Managed IT Services**

☎ 203-254-8500  
🌐 [ebmusa.com](http://ebmusa.com)



**Seven  
Angels**  
THEATRE

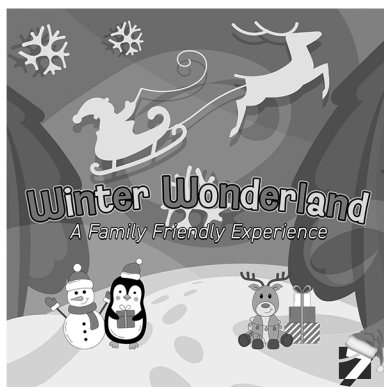
**MAYHEM AND MEMORIES**



**ART OF  
MURDER**

A KILLER  
PSYCHOLOGICAL THRILLER

November 14-30



**Winter Wonderland**  
A Family Friendly Experience

December 13-14, 20-21

**WWW.SEVENANGELSTHEATRE.ORG**



# LETTER FROM THE CEO

Welcome to the Palace Theater! *TINA – The Tina Turner Musical* is our second presentation of the 2025–2026 Webster Bank Broadway Series, and we are excited to host this tribute to the “Queen of Rock n’ Roll!”



This show underscores music’s power to inspire, uplift, and build connections, abilities that Tina Turner drew on throughout her career. As patrons of the arts, you have no doubt experienced the magic of live performances, sharing memorable afternoons and evenings with fellow audience members at shows, concerts, or other presentations. Thank you for choosing to spend time with us today, enjoying this wonderful musical.

Speaking of thanks, November is now upon us, a month where we often reflect on our gratitude to the people, places, and important events in our lives. We at the Palace have thousands of people to be grateful for every year! We have included a special recognition section in this edition of our Show Notes playbill (pages 29–33) as an additional thank you to those who gave last year at the Silver Level or above. Thanks to this support, we continue to build financial security for our beautiful, historic building, while bringing live theater and music to as many people as possible. We hope you’ll consider supporting us this year, to help make a difference to the local arts community — and you could also find yourself on next year’s “thank you” list!

Thank you for supporting the arts, and I hope you enjoy the show!

Sincerely,

A handwritten signature in black ink that reads "Frank Tavera". The signature is written in a cursive style and is positioned below a horizontal line that extends to the left.

Frank Tavera  
CEO

# Tina

THE TINA TURNER MUSICAL

NOVEMBER 1-2, 2025



WebsterBank®



CROSSROADS LIVE

in association with  
TINA TURNER  
present

*Tina*  
THE TINA TURNER MUSICAL

Book by  
KATORI HALL  
with FRANK KETELAAR and KEES PRINS

Starring  
DARILYN BURTLEY

MONTY KANE  
K. BERNICE INDIA SHELBI BOONE EVA RUWÉ

ELENI KUTAY BROOKE ANEECE BROOKE BAILEY MORIAH J. BASKETT TIFFANY BECKFORD LAMAR BURNS  
KYLE CHANNELL MELEEKE CHRISTOPHER LEE THOMAS CORTOPASSI KEEMAR ROBERT DAVIS CLAIRE DAVY  
TIYANNA GENTRY JORDAN ESTELLA HANKERSON JONATHAN HELLER AUSET JONES KIANNA KELLY-FUTCH  
COLLIN KILFEATHER MORGAN LEWIS DANEZION EZEKIEL MILLS HANS JOSÉ MUEH JADYN ROMÉ  
NED WAY RICHARD YARRELL III

Executive Producers  
TINA TURNER and ERWIN BACH

Scenic & Costume Design  
MARK THOMPSON

Lighting Design  
BRUNO POET

Sound Design  
NEVIN STEINBERG

Projection Design  
JEFF SUGG

Wig, Hair & Makeup Design  
CAMPBELL YOUNG  
ASSOCIATES

Casting  
MURNANE CASTING  
AMBER SNEAD, CSA  
CHAD ERIC MURNANE, CSA

Fight Direction  
SORDELET INC.

Music Director  
DANIEL MOLLETT

Production Stage Manager  
GLORIA BONTRAGER-THOMAS

Company Manager  
BRIAN CEDRIC JONES

Tour Management  
CROSSROADS LIVE  
NORTH AMERICA

Production Manager  
HEATHER CHOCKLEY

General Manager  
DEANA MARIE KIRSCH

Executive Producer  
JAYNA NEAGLE

Exclusive Tour Direction  
THE BOOKING GROUP

Marketing & Publicity Direction  
BOND THEATRICAL

Social Media  
THINK TANK

Orchestrations  
ETHAN POPP

Music Coordinator  
TALITHA FEHR

Music Supervisor  
ALVIN HOUGH, JR.

Associate Music Supervisor  
SHANE FFRENCH

Arrangements and  
Additional Music  
NICHOLAS SKILBECK

Associate Director  
SHARIKA NILES

Associate Choreographer  
JANET ROTHERMEL

Choreographer  
ANTHONY VAN LAAST

Director  
PHYLLIDA LLOYD

Originally produced at the Aldwych Theatre, London on 17 April 2018 by Stage Entertainment, Joop van den Ende and Tali Pelman

# CAST



Darilyn  
Burtley



Monty  
Kane



K.  
Bernice



India Shelbi  
Boone



Eva  
Ruwé

# CAST



Eleni  
Kutay



Brooke  
Aneece



Brooke  
Bailey



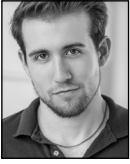
Moriah J.  
Baskett



Tiffany  
Beckford



Lamar  
Burns



Kyle  
Channell



Meleeke  
Christopher



Lee Thomas  
Cortopassi



Keemar Robert  
Davis



Claire  
Davy



Tiyanna  
Gentry



Jordan Estella  
Hankerson



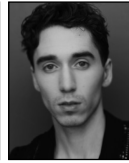
Jonathan  
Heller



Auset  
Jones



Kianna  
Kelly-Futch



Collin  
Kilfeather



Morgan  
Lewis



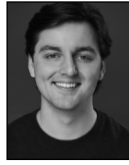
Danezion  
Ezekiel Mills



Hans José  
Mueh



Jadyn  
Romè



Ned  
Way



Richard  
Yarrell III

# CAST

Tina Turner.....	DARILYN BURTLEY
Ike Turner, Ronnie Turner .....	MONTY KANE
Zelma Bullock .....	K. BERNICE
Tina Turner at certain performances .....	INDIA SHELBI BOONE
Gran Georgeanna .....	EVA RUWÉ
Phil Spector.....	KYLE CHANNELL
Raymond Earl King, Craig Turner.....	LAMAR BURNS
Ikettes.....	BROOKE ANEECE, MORIAH J. BASKETT, TIYANNA GENTRY, JORDAN ESTELLA HANKERSON
Roger Davies.....	HANS JOSÉ MUEH
Richard Bullock.....	KEEMAR ROBERT DAVIS
Erwin Bach.....	COLLIN KILFEATHER
John Carpenter.....	LEE THOMAS CORTOPASSI
Young Anna-Mae Bullock, Young Craig Turner, Young Alline .....	CLAIRE DAVY, AUSET JONES
Alline.....	BROOKE ANEECE
Rhonda Graam, Toni Basil.....	ELENI KUTAY
Ensemble.....	ELENI KUTAY, BROOKE ANEECE, BROOKE BAILEY, MORIAH J. BASKETT, LAMAR BURNS, KYLE CHANNELL, LEE THOMAS CORTOPASSI, KEEMAR ROBERT DAVIS, CLAIRE DAVY, TIYANNA GENTRY, JORDAN ESTELLA HANKERSON, AUSET JONES, COLLIN KILFEATHER, DANEZION EZEKIEL MILLS, HANS JOSÉ MUEH, JADYN ROMÉ

## UNDERSTUDIES

*For Tina* — BROOKE BAILEY, TIYANNA GENTRY; *for Ike* — MELEEKE CHRISTOPHER, DANEZION EZEKIEL MILLS, RICHARD YARRELL III; *for Zelma* — KIANNA KELLY-FUTCH, JADYN ROMÉ; *for Gran Georgeanna* — JADYN ROMÉ; *for Raymond* — MELEEKE CHRISTOPHER, RICHARD YARRELL III; *for Richard* — MELEEKE CHRISTOPHER, RICHARD YARRELL III; *for Young Anna Mae* — JORDAN ESTELLA HANKERSON; *for Young Alline* — TIFFANY BECKFORD, JORDAN ESTELLA HANKERSON, MORGAN LEWIS; *for Rhonda* — TIFFANY BECKFORD, MORGAN LEWIS.

Dance Captain — MORGAN LEWIS

Assistant Dance Captains — JONATHAN HELLER, KIANNA KELLY-FUTCH

Fight Captain — NED WAY

## SWINGS

TIFFANY BECKFORD, MELEEKE CHRISTOPHER, JONATHAN HELLER,  
KIANNA KELLY-FUTCH, MORGAN LEWIS, NED WAY, RICHARD YARRELL III



Scan here for any updated cast replacement announcements for this performance

# MUSICAL NUMBERS

## ACT I

“Etherland—Sound of Mystic Law” .....	Tina, Gran Georgeanna
“Nutbush City Limits” .....	Richard, Young Anna-Mae, Ensemble
“Don’t Turn Around” .....	Tina, Gran Georgeanna, Ensemble
“Shake a Tailfeather” .....	Alline, Girlfriends, Tina, Ensemble
“Rocket 88/Matchbox” .....	Ike
“She Made My Blood Run Cold” .....	Ike, Tina, Ensemble
“It’s Gonna Work Out Fine” .....	Zelma, Ike, Alline, Tina, Ikettes
“A Fool in Love” .....	Tina, Ikettes
“Let’s Stay Together” .....	Raymond, Tina
“Better Be Good to Me” .....	Tina, Ensemble
“I Want to Take You Higher” .....	Tina, Ikettes
“River Deep—Mountain High” .....	Tina, Ensemble
“Be Tender With Me Baby” .....	Ike, Tina, Ensemble
“Proud Mary” .....	Tina, Ike, Ikettes, Ensemble
“I Don’t Wanna Fight No More” .....	Tina, Ensemble

## ACT II

“Private Dancer” .....	Tina
“Disco Inferno” .....	Tina, Ensemble
“Open Arms” .....	Rhonda, Tina, Craig, Ronnie, Ensemble
“I Can’t Stand the Rain” .....	Tina, Ike, Ensemble
“Tonight” .....	Young Anna-Mae, Gran Georgeanna, Tina, Roger
“What’s Love Got to Do With It” .....	Tina, Ensemble
“Don’t Turn Around” (reprise).....	Zelma, Tina
“We Don’t Need Another Hero” .....	Tina, Young Anna-Mae, Ensemble
“(Simply) The Best” .....	Tina, Ensemble

*THERE WILL BE ONE 15-MINUTE INTERMISSION.*

### ORCHESTRA

Music Director/Keys 2 — DANIEL MOLLETT  
Associate Music Director/Keys — TIMOTHY DANIEL BOAZ  
Guitar 1 — Leonid Morozov  
Guitar 2 — Jason Fullmer  
Bass — Elliott “Kirk” Kuykendall  
Drums — Tovah Lovely  
Music Coordinator — Talitha Fehr  
Music Technology — Phij Adams  
Additional Music Programming — Stuart Andrews  
Synthesizer Tech — Matthew J. Pool



The use of any recording device, either audio or video, and the taking of photographs, either with or without flash, is strictly prohibited. Please turn off all electronic devices such as cellular phones, beepers and watches.

# WHO'S WHO IN THE CAST

**DARILYN BURTLEY** (*Tina Turner*). She/her. Chicago-born actor and vocalist. Credits include Lyric Opera of Chicago, Drury Lane, Chicago Shakespeare, Porchlight Music Theatre, and TV (*Chicago P.D.*, *The Chi*). She makes her national tour debut as Tina Turner with grace, grit, and gratitude. Thanks to her agents, loved ones, the Sun that keeps her shining, and her co-star, Fantine Rizzo (the Cat).

**MONTY KANE** (*Ike Turner/Ronnie Turner*) was born and raised in Milwaukee, Wisconsin where he earned a bachelor's degree in Theatre Arts at Cardinal Stritch University. Since then, he's appeared in various stage productions, and TV shows in Chicago, IL. Monty thanks everyone involved for this opportunity to be a part of such an important production; and a special thanks to YOU all showing support!

**K. BERNICE** (*Zelma Bullock*) is excited to be a part of *TINA — The Tina Turner Musical!* National Tours: *Come From Away*. Regional credits include *Ragtime*, *The Color Purple*, *Escape to Margaritaville*, *Footloose*, *Heartbreak County*. So much love and thanks to her children, Murnane casting, *TINA*'s creative team, FSE and her wonderful team at DTM. To God be the glory! Psalm 27:1. @kbernice | kbernice.com

**INDIA SHELBI BOONE** (*Tina Turner at certain performances*) returns to *TINA — The Tina Turner Musical*. A Baltimore native and University of the Arts (BFA, Musical Theater) graduate, her credits include *TINA*, *The Book of Mormon*, and *Rent*. She thanks God, her family, HKA, and the creative team.

**EVA RUWÉ** (*Gran Georgeanna*) is thrilled to make her Broadway tour debut! Hailing from Chicago, a dynamic comedian, and Billboard Top Ten recording artist, with a remarkable five-octave vocal range. Her stage credits include *Little Shop of Horrors*, *Gospel at Colonus* at Court Theatre and Getty Museum in LA. She gives heartfelt thanks to her children for their support.

**ELENI KUTAY** (*Rhonda Graam/Toni Basil*). Broadway National Tour Debut! Off-Broadway: *I Hate Hamlet* (Rattlestick Theatre) Regional: *Company* (Amy; Barclay Theatre), *Ragtime* (Moonlight Amphitheatre), *Nickelmines* (ACT of CT), *Mamma Mia* (Laguna Playhouse). UC Irvine BFA. Thank you to the *TINA* team, FSE,

Murnane Casting, and especially my friends and family, who are always there for me with open arms. @eleni\_kutay17

**BROOKE ANEECE** (*Ikette, Alline*). National tour debut! Regional: *Summer: The Donna Summer Musical* (Arts Center of Coastal Carolina), *Beautiful: The Carole King Musical* (Cape Playhouse), *Summer: The Donna Summer Musical & SIX* (NCL), *The Color Purple*, *Rent*, and *Something Rotten*. For my family and thanks to my team. Let's roll!! @brookeaneece

**BROOKE BAILEY** (*Ensemble, u/s Tina Turner*) is excited to be making her Broadway debut! This is a dream come true after many years of show choir and theater performances. She is forever grateful to her mentors and family for their unwavering support and the *TINA* team for their belief in her.

**MORIAH J. BASKETT** (*Ikette*). NATIONAL TOUR DEBUT!!! The proud Atlanta native is excited to join *TINA* on tour. Recent credits include *Hairspray* (TBTS), Carnival Playlist Productions, and *The Color Purple* (Aurora Theatre). All thanks to God and my beautiful village. IG: @moriahjenai

**TIFFANY BECKFORD** (*Swing, u/s Ikettes, Alline, Young Alline, Rhonda*) is elated to be rollin' across the country with *TINA!* National tours: *Ain't Too Proud, American Girl Live! In Concert*. Regional: *Beautiful: The Carole King Musical*, *The Prom*. Love always to my support system! tiffanybeckford.com, IG: @tiffanybeckford\_

**LAMAR BURNS** (*Raymond Earl King/Craig Turner, Ensemble*) is thrilled to be making his national tour debut in *TINA — The Tina Turner Musical!* Lamar holds a B.M. in Music from the University of Central Oklahoma. He has endless gratitude to his family, mentors, and everyone who believed in him.

**KYLE CHANNELL** (*Phil Spector, Ensemble, u/s John Carpenter*). National tour debut! Columbus, Ohio, native, Wright State graduate. REGIONAL: *Forever Plaid* (MTC), *My Fair Lady* (IST & SBDT), *Jersey Boys* (SBDT), *Mystic Pizza* (Tent Theater), *Into the Woods* (TheatreLab Dayton). Venardos Circus — Ringmaster. Thanks to Resolute, Rebel Creative. @kyle.channell

# WHO'S WHO IN THE CAST

**MELEEKE CHRISTOPHER** (*Swing, u/s Ike, Richard, Fred, Raymond*). Birmingham native with talent, charisma and stage presence that has always been undeniable. Meleeke is so thrilled to be making his Broadway national tour debut!! He thanks his family and all of the people that have helped along the way.

**LEE THOMAS CORTOPASSI** (*John Carpenter, Ensemble*) has worked Off-Broadway and extensively at Quintessence Theatre where he's served as Creative Director for seven years. Most recently: Puck in *A Midsummer Night's Dream*, Barrymore Nomination for Best Leading Actor. Lee's short film, *Dummy*, premiered in Europe last Fall and won multiple awards in Italy.

**KEEMAR ROBERT DAVIS** (*Richard Bullock, Ensemble*) is incredibly blessed and overjoyed to return to *TINA — The Tina Turner Musical!* Telling Tina's powerful story has been an honor, and he's grateful to continue sharing her legacy with audiences nationwide. Follow his journey @KeemarDavis on all social platforms.

**CLAIRE DAVY** (*Young Anna-Mae Bullock, Young Craig Turner, Young Alline*) is thrilled to make her Broadway national tour debut! Regional credits include *Millions* (Alliance Theater). Favorite roles include Matilda, Annie and Winnie Foster. Special thanks to mom, family, friends and Bercy Talent. @clairedavyofficial

**TIYANNA GENTRY** (*Ikette, u/s Tina Turner*) is ecstatic to be back out on the road! Tour Credits: *R.E.S.P.E.C.T* on tour! Regional credits: *Frozen, The Full Monty, & Beautiful: The Carole King Musical* (Paramount Theatre). *Always Something There...* The World Premiere as *Scarlet, Beehive, and Beautiful* (Marriott Theatre). *Rock of Ages* as Justice, & *Boeing Boeing* as Gloria (Hope Rep). TV: *The Chi*. She is happily repped by DDO Artists Chicago! — Spread Love <3

**JORDAN ESTELLA HANKERSON** (*Ikette, u/s Young Anna Mae, Young Alline, Young Craig*) is ecstatic to make her national tour debut! A North Carolina native and NC A&T BFA Professional Theatre graduate. Credits: *The Wiz* (Dorothy), *Footloose* (Wendy Jo), *The Color Purple* (Young Nettie). Grateful for her community's unwavering support. Proverbs 31:25. @jo.hankerson

**JONATHAN HELLER** (*Swing, Assistant Dance Captain, u/s Roger, Erwin, John, Phil*). Tour: *CATS*. Regional: *Chicago* (Fred Casely), *Cinderella* (Prince Christopher), *Hello, Dolly!* (Barnaby). Lotte Lenya Competition Finalist. B.M. Eastman School of Music, M.M. NYU Steinhardt. Love to his family, Murnane Casting, & Team *TINA!* For Ted. @jonathanhellerj / jonathanheller.me

**AUSET JONES** (*Young Anna-Mae Bullock, Young Craig Turner, Young Alline*) is thrilled to make her touring debut in *TINA — The Tina Turner Musical!* She trains at AGI and is represented by the Alexander White Agency. Grateful to her coaches, family, and friends for their love and support.

**KIANNA KELLY-FUTCH** (*Swing, Assistant Dance Captain, u/s Zelma, Ikettes, Alline*). National tour debut! Washington, DC native. Manhattan School of Music, B.M. Musical Theatre. Credits - *Beautiful: The Carole King Musical* (Pioneer Theatre and Asolo Repertory Theatre), *Bye Bye Birdie* and *A Bronx Tale* (Argyle Theatre). Jeremiah 29:11. IG: @kiannakellyfutch.

**COLLIN KILFEATHER** (*Erwin Bach, Ensemble*) is a graduate of CAP21 at Molloy University. He's thrilled to join this team for the second year of *TINA — The Tina Turner Musical*. Collin is grateful for everyone who has helped him along the way, especially family and friends.

**MORGAN LEWIS** (*Swing, Dance Captain, u/s Ikettes, Young Alline, Rhonda*). She/her. Morgan is excited to return to *TINA* as Dance Captain/Swing after her National Tour debut last year as Ikette #1. Credits: Syracuse Stage, The Lex, Alabama Shakes. All love to Mom, Dad, and Miles! Bleed Orange! IG: @morgmlew

**DANEZION EZEKIEL MILLS** (*Fred, Ensemble, u/s Ike*) is excited for his professional musical debut. Credits: TV/Film: *Bouncer* in *S.W.A.T.*, Undercover Agent in *Sugar*, Hunter in *Witch Hunter*; Commercials: Madden 24, Celcius, Filtrate, Amazon, Cricket; Stage: Robert Smalls in *Trouble the Water*, Theseus in *Midsummer*.

**HANS JOSÉ MUEH** (*Roger Davies, Ensemble*) is delighted to join his second pop diva national tour with *TINA* right after *The Cher Show* and to bring his sweet Australian accent to the masses! Love to mom, dad, Henri, and his marvelous friends and family! @the\_daily\_muehs

# WHO'S WHO IN THE CAST

**JADYN ROMÈ** (*Ensemble, u/s Zelma Bullock & Gran Georgeanna*) is thrilled to be reprising her role in *TINA!* Regional: *Little Shop of Horrors*. TV: *American Idol*. AMDA alum. Jadyn thanks her agency Bramante Artists & management Dream Talent, her Mom, family & friends for their endless love and support! @jadyrnlynah

**NED WAY** (*Swing, Fight Captain, u/s Roger, Erwin, John, Phil*). National Tour debut! NYC: *Swing in The Office Musical Parody!* Regional: *Curly* in *Oklahoma, Waitress*, and u/s Nick Massi in *Jersey Boys*. He thanks his Mom, Dad, other parental figures, and his sisters for always supporting him. @nedwardway

**RICHARD YARRELL III** (*Swing, u/s Ike Turner, Richard, Raymond, Fred, Craig, Ronnie*) is an Actor, Singer and Dancer who studied at the American Musical and Dramatic Academy, as well as The Mama Foundation for the Performing Arts in Harlem, New York. Making his *TINA — The Tina Turner Musical* National Tour return, he's excited to be "Rolling On The River", once more!!! IG: Richard\_Yarrell\_iii

**TINA TURNER**. With a career that has spanned more than half a century, the legendary rock performer Tina Turner was one of the world's bestselling artists of all time. She first rose to fame in the 1960s partnering with her then-husband Ike Turner, achieving great acclaim for their live performances and catalogue of hits. Later, Turner enjoyed an international solo career with her 1984 album *Private Dancer*, earning her widespread recognition and numerous awards including three Grammys. She went on to deliver more chart-topping albums and hits, receiving a further eight Grammy Awards and reportedly selling more concert tickets than any other solo performer in history. The revered singer was inducted into the Rock and Roll Hall of Fame in 1991 and again as a solo artist in 2021. She continues to be voted as one of the most successful female rock 'n' roll artists of all time.

**TINA TURNER/ERWIN BACH** (*Executive Producers*). Tina Turner is recognized as one of the most influential artists of the 21st century. With a career spanning five decades, Tina won 12 Grammys and sold more than 200 million albums worldwide. Erwin Bach, a record executive for over 30 years, produced music with the 21st century's most prolific artists. Director/chairman for EMI in Germany and

Switzerland, Erwin worked with musicians such as Paul McCartney, Queen, Lenny Kravitz, Radiohead and Tina Turner. Tina and Erwin married in 2013.

**KATORI HALL** (*Book*). Memphis native Katori Hall is a Pulitzer Prize and Olivier Award-winning playwright. Her works include *The Mountaintop, Hurt Village, Our Lady of Kibeho* and *The Hot Wing King*, which premiered in spring 2020 at Signature Theatre, rounding out her three-play residency. She is also the creator and EP of the hit TV drama *P-VALLEY*, which will return in 2022. Hall is a proud member of the Ron Brown Scholar Program and the Coca-Cola Scholar Program.

**FRANK KETELAAR AND KEES PRINS** (*Book*). Playwrights Ketelaar and Prins have enjoyed award-winning success such as the smash hit bio-musical *Hij Geloof in Mij*, which ran for three years in Amsterdam. They also collaborated on the Prix Europa and International Emmy Award-winning feature film *De Uitverkorene*.

**PHYLLIDA LLOYD** (*Director*). Donmar all-female Shakespeare trilogy (London and St. Ann's Warehouse), *The Taming of the Shrew* (The Public Theater at the Delacorte), *Mary Stuart* (Donmar Warehouse, Apollo and Broadway; Tony nomination), *Josephine and I* (Bush Theatre/Joe's Pub). *Mamma Mia!* (London, Broadway, worldwide), *The Ancient Mariner* (BAM). Film: *Mamma Mia!* (Universal), *The Iron Lady* (Pathe/DJ Films), *Gloriana A Film* (Illuminations, International Emmy), *Herself* (Element Pictures). Opera: in London, Paris, Copenhagen, Tokyo, Barcelona, Toronto.

**ANTHONY VAN LAAST** (*Choreographer*). *TINA* (worldwide; Tony nomination, Outer Critics Circle Award), *Mamma Mia!* (worldwide; Dora Mavor Moore Award), *Sister Act* (worldwide, Olivier nomination), *Side Show* (Broadway), *Bombay Dreams* (Tony nomination, Drama Desk nomination), Andrew Lloyd Webber's *Song and Dance* (Green Room Award). Concerts: Cher, Kate Bush, Sarah Brightman. Films: *Mamma Mia! Here We Go Again, Beauty and the Beast, Mamma Mia!, Harry Potter and the Deathly Hallows*. Awarded the CBE by the Queen for services to dance.

**SHARIKA NILES** (*Associate Director*) is thrilled to be making her Associate Directing

# WHO'S WHO IN THE CAST

debut. Broadway Stage Manager: *TINA, The Play That Goes Wrong, The Color Purple, Finding Neverland, Motown, Pippin*. 'Bringing forth the Power to change poison into medicine.'

**JANET ROTHERMEL** (*Associate Choreographer*). Broadway: *Mamma Mia!, Sister Act, Side Show, Joseph...Dreamcoat*. TV: *Dancing With the Stars*. Tony Awards, Miss USA/Universe. Film: *Beauty and the Beast* (2017), *Mamma Mia!* (2008).

**ALVIN HOUGH, JR.** (*Tour Music Supervision*). Broadway: *Once On This Island, The Color Purple, Motown, Scandalous*. National tours: *Memphis, Dreamgirls*. Off-Broadway: *Working, Hercules, Big River*. TV/film: *Dear Evan Hansen, Pose, tick, tick...BOOM!, Vivo*. Originally from D.C., Alvin also has two degrees in meteorology from Harvard and Georgia Tech. He sends love to his wife, Rebecca, and their children, Samuel and Camille. [alvinhoughjr.com](http://alvinhoughjr.com)

**MARK THOMPSON** (*Set & Costume Design*). Awards/nominations: two Critics Circle Awards, five Olivier Awards and seven Tony Award nominations. Theatre in NYC: *Charlie and the Chocolate Factory; The Taming of the Shrew; Mamma Mia!; A Raisin in the Sun* (set only); *Joseph and the Amazing Technicolor Dreamcoat; God of Carnage; Life (x) 3; Bombay Dreams; Art; Follies* (set only); *La Bête; One Man, Two Guvnors; The Blue Room; Arcadia*. Met Opera: *The Queen of Spades, Macbeth*.

**BRUNO POET** (*Lighting Design*) is an Olivier and Knight of Illumination award-winning lighting designer working throughout the world in theatre, opera, live music, dance and events. Notable productions include Bjork's *Cornucopia* (The Shed), *Akhmaten* (Met Opera), *Miss Saigon* (Broadway and U.S. tour), *Sigur Rós* (Radio City Music Hall and Madison Square Garden), *Other Stories* (City Ballet), Apollo 11 (U.S. tour).

**NEVIN STEINBERG** (*Sound Design*). Broadway: *TINA — The Tina Turner Musical* (Tony nomination), *Hadestown* (Tony Award), *Hamilton, Dear Evan Hansen, The Cher Show, Bandstand, Bright Star, It Shoulda Been You, Mothers and Sons*, Rodgers + Hammerstein's *Cinderella* (Tony nomination), *The Performers, Magic/Bird*. Over 30 Broadway productions with Acme Sound Partners and five additional Tony nominations: *The Gershwin's Porgy and Bess, Bengal Tiger at the Baghdad Zoo, Fences, Hair, In the Heights*.

**JEFF SUGG** (*Projection Design*) is an award-winning and Tony nominated designer with over 20 years in the performing arts. His work ranges from experimental to classical to Broadway. Credits include Broadway: *All My Sons, Charlie and the Chocolate Factory, Sweat, Bring It On: The Musical, 33 Variations*. West End: *TINA — The Tina Turner Musical*. Music: *Fire in My Mouth* (NY Philharmonic), *Anthracite Fields* (Julia Wolfe's Pulitzer Prize-winning piece), Prince's final appearance on *SNL*.

**CAMPBELL YOUNG ASSOCIATES** (*Hair, Wigs & Makeup Design*). Broadway: *To Kill a Mockingbird; Carousel; Hello, Dolly!; Groundhog Day; Head Over Heels*. West End/Broadway: *Company, TINA — The Tina Turner Musical* (DD Award for Outstanding Wig & Hair Design), *A Christmas Carol, The Ferryman, Jerusalem, Charlie and the Chocolate Factory, Matilda, Ghost, Billy Elliot*. West End: *Back to the Future, Cinderella, Anything Goes, Leopoldstadt*. TV: *The Marvelous Mrs. Maisel, Downton Abbey*.

**MURNANE CASTING** (*Casting*) is a first-class office in New York City specializing in casting theatre, film, and television projects nationwide. We focus on developing new works and collaborating with emerging creators. Our mission is to curate exceptional ensembles of artists in a relaxed and imaginative casting environment. Learn more at [MurnaneCasting.com](http://MurnaneCasting.com).

**NICHOLAS SKILBECK** (*Original Musical Supervision, Arrangements, and Additional Music*). Recent work includes *TINA — The Tina Turner Musical* (London, Hamburg). Olivier-nominated for his work on *Follies*. West End Olivier Award-winning productions: *Follies, Gypsy, Sweeney Todd, Hairspray and Billy Elliot*. Other credits include *Charlie and the Chocolate Factory* (West End, Broadway) and musical director for *Kate Bush: Before the Dawn* at the Hammersmith Apollo. Compositions: *Quand la Guerre Sera Finie*. Books: *The Singing and Acting Handbook — Games and Exercises for the Performer*.

**ETHAN POPP** (*Orchestrations*). 2014 Grammy Award Nomination (*Motown the Musical*), 2013 and 2021 Tony Award Nominations (*Motown the Musical* and *TINA — The Tina Turner Musical*), 2022 Olivier Award Nomination (*Back to the Future*). Theatre: *Back to the Future*,

# WHO'S WHO IN THE CAST

*Mrs. Doubtfire, School of Rock, Hedwig and the Angry Inch, Motown the Musical, Rock of Ages, Tarzan, We Will Rock You, Disney's Aida,* and many more. Television: *Last Week Tonight, Smash,* others. Film: *Bohemian Rhapsody, The Greatest Showman.* Love to Vanessa and Aldrin! ethanpopp.com

**SHANE FFRENCH** (*Associate Music Supervisor*). Born in Wexford, Ireland, studied at the Cork School of Music. In Ireland was the music director at Cork opera house and worked in TV *The Voice, The Late Late Show.* Since coming to the U.S., Shane has worked on a number of touring shows: *Cats, The Color Purple, Kinky Boots, Pretty Woman.* Instagram @ffrenchshane.

**RACHEL SABO-HEDGES** (*Assistant Director*). She/they. Rachel Sabo-Hedges is New York-based director, assistant director and Artistic Director of Collab NYC, an immersive producing space supporting new voices and emerging artists. She is thrilled to join Tina — *The Tina Turner Musical* and thanks the entire company for their warmth, artistry, and spirit. @rachelksabohedges

**JAY ROBERTS-MILLER** (*Assistant Choreographer*) is so excited to be back with *TINA — The Tina Turner Musical* after serving as Swing/Dance Captain for year one of the first national tour. Endless thanks to Janet, Andi, and the rest of my family and friends. @jacobtwolastnames jayrobertsmiller.com

**TALITHA FEHR** (*Music Coordinator*) has worked on over 75 national and international productions and tours since 2005. Highlights include: *Sister Act, Mamma Mia!, School of Rock, Come Fly Away, Phantom of the Opera, Love Never Dies,* and *Priscilla Queen of the Desert* as well as the 2010 Olympic Ceremonies in Vancouver. She dedicates her work on *TINA* to the memory of her mentor, Sam Lutfiyya.

**DANIEL MOLLETT** (*Music Director*) is making his tour debut as a music director. Previously he worked six seasons at Tuacahn Center for the Arts as music director/pianist on shows like *Anastasia,* the regional premier of *Frozen,* and *Joseph and the Amazing Technicolor Dreamcoat* with David Archuleta.

**GLORIA BONTRAGER-THOMAS** (*Production Stage Manager*). She/her. Gloria is a stage manager from St. Louis, MO. National

Tours: *COME FROM AWAY,* Regional: *Romeo and Juliet,* Notre Dame Shakespeare, *Death of a Salesman, The Light, Skeleton Crew, EUBIE!*, St. Louis Black Repertory Company.

**BRUNO DIAZ MIRANDA** (*Assistant Stage Manager*) is thrilled to be making his national touring debut in Nutbush with *TINA — The Tina Turner Musical.* Previous credits in Regional Theatre and Opera. He is grateful for his past and present mentors.

**BRIAN CEDRIC JONES** (*Company Manager*). *SUFFS, How The Grinch Stole Christmas, Tootsie.* “At every moment, we always have a choice, even if it feels as if we don’t. Sometimes that choice may simply be to think a more positive thought.” – Tina Turner, *Happiness Becomes You.* Love to Xroads and my family!

**TANEAL WILLIAMS** (*Associate Company Manager*). She/her. Taneal Williams is an actor, director, and arts manager from New Orleans. A Stephens College grad and Gilman Scholar, she’s toured with *The Book of Mormon* and *CHICAGO* and trained at NTI and Moscow Art Theatre in Russia. @capt\_taneal

**HEATHER CHOCKLEY** (*Production Manager*) joined the CXL team after having toured, both nationally and internationally, for 15 years. After that lifetime on the road, she finds she likes not living out of a suitcase the whole time. Now based in the DC metro area, she also does a bit of political event work, and shares the crew member recruiting responsibilities at CXL.

**DEANA MARIE KIRSCH** (*General Manager*) is a seasoned entertainment industry professional with over 20 years of experience, managing top productions including *Criss Angel Mindfreak, Jersey Boys, Magic Mike Live, Annie,* and many more. ‘I stayed the course... because I believed in something inside of me.’

**THE BOOKING GROUP** (*Tour Booking Agency*) has represented 28 Tony Award® winning Best Musicals and Plays. Current tours include *The Book of Mormon, Boop!, Buena Vista Social Club, Chicago, Funny Girl, Hometown, Hamilton, Harry Potter & the Cursed Child, Just In Time, Mamma Mia!, Richard Thomas in Mark Twain Tonight!, MJ The Musical, Mrs. Doubtfire, The Notebook, Oh Mary!, Operation Mincemeat, Parade, Real*

# WHO'S WHO IN THE CAST

*Woman Have Curves, Six, Some Like It Hot, Suff's, Tina—The Tina Turner Musical, Waitress and The Wiz.*

**BOND THEATRICAL** (*Marketing & Publicity Direction*) is an independently-owned theatrical booking, marketing and publicity company representing award-winning Broadway shows and live entertainment properties. BOND connects artists and audiences by forming strategic, authentic and profitable partnerships between producers and presenters across North America. For a complete list of current projects, please visit [BondTheatrical.com](http://BondTheatrical.com)

**NEUROSPORT** (*Physical Therapist*). Leaders in performing arts and entertainment medicine. We are honored and grateful to work with this amazing production of *TINA—The Tina Turner Musical*.

**JAYNA NEAGLE** (*Executive Producer*) left her job at The Wall Street Journal Online in 2004 to study theater at Columbia University, where she transitioned her love of creating things with people from news to theater. Since then, she has produced shows for CXL, Running Subway, Cirque du Soleil, and BASE Entertainment.

**CROSSROADS LIVE** (*Producer & Tour Management*) brings together some of the world's top producers of live entertainment, now all under one banner. With offices in London, New York, Washington, D.C., Sydney, and Melbourne — our global platform ensures the best-loved titles from Broadway and the West End can be embraced by audiences around the world. Crossroads Live North America, under the leadership of Angela Rowles, is an innovative, full-service theatrical production company delivering the Broadway experience to audiences in North America and beyond. Our 2025–2026 Season: *Dr. Seuss' How The Grinch Stole Christmas! The Musical; Elf The Musical, Kinky Boots; The Phantom of the Opera* (Asia); *TINA — The Tina Turner Musical*.

---

## STAFF FOR *TINA—THE TINA TURNER MUSICAL*

---

### For Crossroads Live North America EXECUTIVE PRODUCER

Jayna Neagle

### GENERAL MANAGER

Deana Marie Kirsch

Associate General Manager ..... Emily Miu

### PRODUCTION MANAGER

Heather Chockley

Assistant Production Manager ..... Drew Neitzey

### COMPANY MANAGER

Brian Cedric Jones

Associate Company Manager ..... Taneal Williams

### TOUR MARKETING & PUBLICITY

BOND THEATRICAL

[bondtheatrical.com](http://bondtheatrical.com)

Temah Higgins Mollie Mann DJ Martin

Marc Viscardi Wendy Roberts

Jenny Bates

Linda Stewart Scotland Newton

### TOUR DIRECTION

THE BOOKING GROUP

Meredith Blair

Brian Brooks and Rich Rundle

[www.thebookinggroup.com](http://www.thebookinggroup.com)

### CASTING

MURNANE CASTING

Chad Eric Murnane, CSA

Amber Snead, CSA

Nathanial Riccio

### PRODUCTION STAGE MANAGER Gloria Bontrager-Thomas

Assistant Stage Manager ..... Bruno Diaz Miranda

Dance Captain ..... Morgan Lewis

Assistant Dance Captains ..... Jonathan Heller,

Kianna Kelly-Futch

Fight Captain ..... Ned Way

Associate Music Supervisor ..... Shane French

Assistant Director ..... Rachel Sabo-Hedges

Assistant Choreographer ..... Jay Roberts Miller

Associate Scenic Designer ..... Brian Webb

Production Carpenter ..... Wendy Joy Beckwith

Associate Lighting Designer ..... John Viesta

Moving Light Programmer ..... Josh Selander

Production Electrician ..... Rob Virzera

Associate Sound Designer ..... Jaechelle Johnson

Production Audio ..... Kevin Thurber

Associate Projection Designer ..... Simon Harding

Video Programmer ..... Dan Scully

Video Animator ..... Brittany Bland

Production Video ..... Jordan Brown, Asher Robinson

Costume Coordinator ..... Kaitlyn Barrett

Hair and Makeup Coordinator ..... Liz Printz

Synthesizer Tech ..... Matthew J. Pool

Production Assistants. Amani Meliyah, Taylor Jackson

### HEAD CARPENTER ..... Hunter White

Flyman ..... Thomas Crosby

Head Props ..... Kyle Dill

Assistant Props ..... Crosby Wood

Head Electrician ..... Travis Triplett

Assistant Electrician ..... Andrew Beauregard

Assistant Electrician ..... Sally Garner

Head Audio ..... Julia Moriarty

Assistant Audio ..... Walker Smith

Wardrobe Supervisor ..... Riley Clark

Assistant Wardrobe ..... Lucy Antonio

Hair and Makeup ..... Danielle Singletary

Assistant Hair & Make Up ..... Kellen Eason

Crew Swing ..... Darniece Brandon

Child Services ..... In Site Education

Teacher/Child Manager ..... Elissa Cevallos

Physical Therapy Company ..... NEURO TOUR

Physical Therapy

# WHO'S WHO IN THE CAST

Physical Therapist..... Amanda Roithmayr  
 Travel/Housing..... Road Rebel Global  
 Payroll Services..... Paychex  
 Insurance..... EPIC Insurance Brokers  
 Visa Consultants..... Wiskoff Law/Carly Wiskoff  
 Social Media..... Think Tank/ Randy Belvins,  
 Courtney Hayden  
 Merchandise Provider..... Creative Goods  
 Merchandise Manager..... Dee Jones

## Crossroads Live North America

Chief Executive Officer..... Angela Rowles  
 Executive Producer..... Jayna Neagle  
 Executive Producer..... Kori Prior  
 Vice President of People Operations... Charisse Fontes  
 Vice President of Finance..... Brian Jacob  
 Vice President of Marketing..... Michael Yuen-Killick  
 Senior General Manager..... Andrew Terlizzi  
 Director of Production..... Heather Chockley  
 Director of Booking and Engagements..... Tyler Soltis  
 Production Manager..... Gregg Damanti  
 General Manager..... Christine Adamczyk  
 General Manager..... Deana Marie Kirsch  
 Engagement Manager..... Barrett Newman  
 Tour Project Manager..... Wendy Beckwith  
 Associate General Manager..... Emily Miu  
 Tour Operations Manager..... Suzann MacKenzie-Roy  
 Assistant Production Manager..... Drew Neitzey  
 Production Accounting Manager..... Sheila Lewis  
 Production Accountant..... Travis Huebel  
 Staff Accountant..... Electra Walker  
 Administrative Apprentice..... Lindsay Weidenfeller

Learn more about Crossroads Live North America and our team: [www.xroadslive.com](http://www.xroadslive.com)

## CREDITS

Scenery built by Proof Productions. Scenery also by PRG-Scenic Technologies, a division of PRG Broadway, L.L.C., New Windsor, NY. Additional Scenery by Great Lakes Scenic Studios. Lighting and projection equipment by Production Resource Group. Sound equipment by Sound Associates. Motors by Christie Lies. Costumes constructed by By Barak LLC, Ed Dawson Tailors, Eric Winterling Costumes, Jeff Fender Studio, Joelyn Wilkosz, John Kristiansen New York Inc., Marsha Kuligowski, and Yasemin Esmek. Props built by R Ramos Upholstery, Prop and Paint Creative Studio, BrenBri Props, JP Carrier, Hat Rabbit Studio, Paper Mache Monkey, Props Stitcher Anthony Paul-Cavaretta, and Custom Quilting by Bertie Michaels @stitchstudionyc. Trucking by Janco.

Rehearsed and teched at the  
 Lied Center for Performing Arts

@tinabroadway | tinaonbroadway.com

## MUSIC CREDITS

“A Fool In Love” by Ike Turner EMI Unart Catalog Inc (BMI). “Be Tender With Me Baby” by Albert Hammond; Holly Knight BMG Gold Songs (ASCAP). “Better Be Good To Me” by Mike Chapman; Nicky Chinn; Holly Knight BMG Gold Songs, Downtown DLJ Songs, Universal Music (ASCAP). “Disco Inferno” by Leroy Green; Tyrone Kersey Reservoir Media Management, Inc., Almo Music obo Mercy Kersey Music. “Don’t Turn Around” by Albert Hammond; Diane Warren Albert Hammond Music/Kobalt Music Publishing Ltd, Realsongs Publishing, Edition Sunset Publishing/Universal Music Publishing MGB Ltd. “Heartbreak Hotel” by Elvis Presley; Mae Axton; Tommy Durden; Elvis Presley © Sony/ATV Tree Publishing LLC. All rights administered by Sony Music Publishing LLC 424 Church Street, Suite 1200, Nashville, TN 37219 all rights reserved. Used by permission. “I Can’t Stand The Rain” by Ann Peebles, Bernard Miller, Donald Bryant, Irving Music administered by Universal Music Publishing Group Used by permission all rights reserved. “I Want To Take You Higher” by Sylvester Stewart Mijac Music (administered by Sony Music UK). “I Don’t Want To Fight (No More)” by Billy Lawrie; Lulu Kennedy Cairns;

Stephen DuBerry BMG Blue, Fairwood Music (UK) Ltd. “It’s Gonna Work Out Fine” by Rose Marie McCoy; Sylvia McKinney IQ Music Ltd. “Let’s Stay Together” by Al Jackson, Jr.; Willie Mitchell; Al Green Universal Music Publishing Ltd © Irving Music (BMI) and Al Green Music Inc. (BMI), Kobalt Music Publishing/Songs of Atlas Music. “Matchbox” by Ike Turner Conexion Music, BMG Platinum Songs. “Nutbush City Limits” by Tina Turner EMI Music Publishing Limited, licensing courtesy of Sony Music. “Open Arms” by Ben Barson; Martin Brammer; Colette van Sertima EMI Blackwood Music, licensing courtesy of Sony Music; Universal Polygram International Publishing obo Lots of Hits Music. “Physical” by Stephen Kipner; Terry Shaddick 1981 EMI April Music All rights on behalf of EMI April Music Inc. administered by Sony Music Publishing LLC 424 Church Street, Suite 1200, Nashville, TN 37219 all rights reserved. Used by permission, Floating World Music. “Private Dancer” by Mark Knopfer Universal Music Publishing Ltd obo Straightjacket Songs/ Almo Music/Rondor Music. “Proud Mary” by John Fogerty © 1964 Jondora Music (Sage). All rights administered by Concord Music. “River Deep, Mountain High” by Phil Spector; Jeff Barry and Ellie Greenwich Mother Bertha Music, licensing courtesy of Sony Music; Songs of Polygram International/Universal Music Publishing Ltd; Trio Music Company (BMI); ABKCO Music, Inc. “Rocket 88” by Jackie Brenston Uni-Chappell Music. “Shake A Tailfeather” by Verlie Rice; Andre Williams; Otha Hayes Kassner Associated Publishers. “She Makes My Blood Run Cold” by Ike Turner Round Hill Music obo Fort Knox Music, and BMG obo Trio Music Company. “(Simply) The Best” by Holly Knight; Mike Chapman BMG Gold Songs (ASCAP) obo Knighty – Knight Music, Music & Media/ Mike Chapman Publishing Enterprises. “Sound of Mystic Law” by Tina Turner, Dechen Shak-Dagsay, Regula Curti, Gunther Mende-Kim, Pit Leow From the New Edition BMG Platinum Songs (BMI). “Tonight” by David Bowie; James Osterberg Screen Gems EMI Music, licensing courtesy of Sony Music Published by RZO Music Ltd/ Westbury Music Consultants BMG Bumblebee (BMI) “We Don’t Need Another Hero” by Terry Britten; Graham Lyle © 1992 WB Music Corp. (ASCAP) and Goodsingle Ltd. (PRS) All rights on behalf of WB Music Corp. administered by Warner/Chappell North America Ltd; BMG Platinum Songs US (BMI). “What’s Love Got To Do With It” by Terry Britten; Graham Lyle © 1984 WB Music Corp. (ASCAP) and Goodsingle Ltd. (PRS) All rights on behalf of WB Music Corp. administered by Warner/Chappell North America Ltd and BMG Platinum Songs US (BMI). **Music clearance services: Manage This Media LLC - Janet Billig Rich, David A. Rich and Lisa Klein Moberly**

## RESOURCE ORGANIZATIONS

If you or a loved one has experienced sexual violence, you are not alone. The National Sexual Assault Hotline is available 24/7 with free, confidential support in English and Spanish at 800-656-HOPE (4673) and at [rainn.org](http://rainn.org).

The National Suicide Prevention Lifeline provides 24/7, free and confidential support via phone or chat for people in distress, resources for you or your loved ones, and best practices for professionals. Text or Call 988. Website [988lifeline.org](http://988lifeline.org)



Backstage and Front of the House Employees are represented by the International Alliance of Theatrical Stage Employees (or I.A.T.S.E.).



The Director is a member of the STAGE DIRECTORS AND CHOREOGRAPHERS SOCIETY, a national theatrical labor union.



United Scenic Artists • Local USA 829  
 of the I.A.T.S.E. represents  
 the Designers & Scenic Artists  
 for the American Theatre

# PALACE THEATER STAFF DIRECTORY

## BOARD OF DIRECTORS

Martin Morgado, <i>Chair</i>		Shae Apland, <i>Marketing Committee Chair</i>	
Michael O'Connor, <i>Treasurer/Vice Chair</i>		Mary Rosengrant Chiappalone, <i>Development Committee Chair</i>	
Jack Senich, <i>Vice Chair</i>		Dr. Peter Jacoby, <i>Past Chair</i>	
Dora Bennett, <i>Secretary</i>			
Vanessa Aguilar	Carolyn Highsmith	Sandra	Christopher Rempfer
Kathleen Brochhausen	J.C. Hopkins	Martinez-McCarthy	Felix Rodriguez
Mary Grace Cavallo	Dr. Scott Kurtzman	Lynnette Letsky	Timothy Rourke
Beth Devino	Dave Martin	Piombo	Matthew Tryforos
Joseph D'Orso		Giuseppe "Joe" Pisani	

## BOARD OF ADVISORS

Carolyn F. Cicchetti	Timothy C. Moynahan	James C. Smith	Sandra Vigliotti-Senich
----------------------	---------------------	----------------	-------------------------

## CHIEF EXECUTIVE OFFICER

Frank Tavera

## ADMINISTRATIVE STAFF

Ana Dec <i>Programs &amp; Ticketing Officer</i>	Andrea Nyquist <i>Marketing, Sales &amp; Public Relations Officer</i>
Dave Flowers <i>Chief Production Officer</i>	Stephanie Panico <i>Special Events Manager</i>
Debbie Forchielli <i>Volunteer Coordinator</i>	Deirdre Patterson <i>Box Office Manager</i>
Denise Hinkelman <i>Box Office Coordinator &amp; Development Services</i>	Lindsey Rosa <i>Development Associate</i>
Brian Kimmey <i>Design &amp; Digital Manager</i>	Sandra Rosa <i>Finance Officer</i>
Natalie Lawlor <i>Development Officer</i>	Matt Sivilla <i>Building Mechanic</i>
Marlene Lindquist <i>Volunteer Assistant</i>	Lisa Suzio <i>Director of Hospitality</i>
Tina Lubus <i>Finance Manager</i>	Ashley Sweet <i>Operational Events Manager</i>
Meg Luddy <i>Tour Coordinator</i>	Peggy Terhune <i>Communications Manager</i>
Sheree Marcucci <i>Director of Special Projects &amp; Curated Programs</i>	Cheryl Tokarski <i>Assistant Volunteer Coordinator</i>
Emanuel Neri <i>Building Porter</i>	Sydney Wyatt <i>Digital Marketing Coordinator</i>

## TECHNICAL STAFF

Dave Barata, <i>Head Sound Engineer</i>	Karin Lopez, <i>Wardrobe Mistress</i>
Andrew Bynum, <i>Head Electrician</i>	Catherine Moore, <i>Properties Manager</i>
Gardner Friscia, <i>Head Carpenter</i>	Ken Owens, <i>Head Flyman</i>

## HOUSE MANAGERS

Donna Cameron	Crystal LaBonte	Joe Frascatore
---------------	-----------------	----------------

# 2025-2026 CORPORATE PARTNERS

## CORPORATE SPONSORS



---

## CORPORATE MEMBERS

---

Aeroswiss LLC  
Albert Brothers  
American Heating Service  
Bunker Hill Pharmacy  
Carpin Manufacturing  
Coil Pro Machinery, Inc.  
The Corbo Group  
Demsey Manufacturing Company  
Diversified Building Services

Gaffney, Bennett & Associates, Inc.  
Highstreet Insurance and  
Financial Services  
Hubbard-Hall Inc.  
Ives Bank  
Jaci Carroll Staffing  
L.F. Powers Co., Inc.  
Marion Manufacturing  
Montagno Insurance Inc.  
Moore, O'Brien & Foti

Nanavaty Davenport  
Studley White LLP  
Nelson Heat Treating Co., Inc.  
The Nicholas Law Firm, LLC  
Atty. Thomas & Janine Pettinicchi  
Secor, Cassidy & McPartland, PC  
Suzio-York Hill  
Tomasso Group  
TORRICO

---

## INSTITUTIONAL SUPPORTERS

---

Adam Broderick Salon & Spa  
American Savings Foundation  
Arts & Culture Collaborative —  
Waterbury Region  
Bank of America  
Barter Business Unlimited  
Cavallo's Imported Italian Foods  
Central CT  
Chambers of Commerce  
City of Waterbury,  
Arts & Tourism Commission  
CompuMail  
Connecticut Community  
Foundation  
Connecticut Public Radio  
Corporate Display Specialties  
David, Helen & Marian  
Woodward Fund  
DNR Laboratories  
Elisha Leavenworth Foundation

Emily's Catering Group  
Eversource Energy Foundation  
Fascia's Chocolates  
Felix Manuel Photography  
Frankie's of Reidville Drive  
Full Power Radio  
George A. & Grace L. Long  
Foundation  
Graham's Florist LLC  
Greater Waterbury YMCA  
Harry's Party Rental  
LaBonne's Markets  
Logan Vance Sullivan & Kores LLP  
Michael's Greenhouses  
Naugatuck Valley  
Ear, Nose & Throat  
New England  
Arts & Entertainment  
The Next Street  
Selim & Linda Noujaim

Onyx II Fine Jewelers  
Pepsi Cola of Bristol  
Perry's Cleaners  
Prospect Printing Company  
Mary Ellen & Tim Rourke  
Susan Suhr & Marina Viale  
Sweet Maria's  
Thomaston Savings Bank  
Foundation  
United Way of Greater Waterbury  
Verbena Caterers  
The Village at East Farms  
Waterbury Regional Chamber  
Waterbury Symphony Orchestra  
Watertown Foundation  
WATR Radio 1320 AM  
WFSB Eyewitness News 3  
WORX  
WSHU Public Radio

# SPECIAL THANKS TO OUR \$100+ DONORS

## FOUNDER

\$10,000 +

Frank & Michele Monteiro  
Tom & Janine Pettinocchi  
Mary Ellen & Tim Rourke  
Susan Suhr & Marina Viale

---

## PARTNER

\$5,000 – \$9,999

The Carpinella Family  
Bob & Tara Caulfield  
Carolyn F. Cicchetti  
Beth Devino  
Nick & Barbara Germak  
Green Hub Development  
Corp III, LLC  
Fumiko Hoeft  
David & Nancy Nurnberger  
Michael & Susie Peluso  
Jack Senich &  
Sandra Vigliotti Senich  
Christopher C. Setaro  
Jim & Cathy Smith

---

## BENEFACTOR

\$2,500 – \$4,999

Joshua Broder —  
Centurion Wealth Management  
Mary & Steven Chiappalone  
A. Ralph Corbo &  
Barbara Helfer Corbo  
David & Brenda Ferraro  
Peter & Kristen Jacoby  
Martin & Heather Morgado  
Charles & Joanne Nanavaty  
Bryce P. Shashinka  
Joseph & Lauri Sylvestro  
Frank & Deidre Tavera

## DIRECTOR

\$1,000–\$2,499

Chris & Audra Allen  
Shae & Marissa Apland  
Emma Barone &  
the late Fred Barone  
Kurt & Jean Barwis  
Joel & Nancy Becker  
Erin Benvegna  
Christian & Christina Bergeron  
Timothy & Kirsten Bergstrom  
Linda Bernardini  
Pat Bosco  
Kathleen & Peter Brochhausen  
Richard & Nancy Bushka  
Nancy G. Calabrese  
Rocky & Darlene Capozzi  
Don & Ellen Ciampi  
Michael & Dianne Cicchetti  
Coil Pro Machinery, Inc.  
Roberta Cusano  
Robert & Nancy D'Addabbo  
Joyce S. DeCesare  
Tom DeLeon —  
Lee Lynd Mfg. Co. Inc.  
Nick Deramo  
Thomas Devino  
Brian J. DiVito  
Oguz Erkan & Donnalee Robinson  
Fern & Barry Feldman  
The Forchielli Family  
Rosalie Fusco  
Ellen & Joe Gambini  
John Gibbons  
Randee Lee Hickey  
Jack & Jennifer Hogan  
David Ioime  
Dr. & Mrs. Michael Karnasiewicz  
Paul Largay

Richard & Elaine Lau  
John & Natalie Lawlor  
Peggy & Jim Lawlor  
Teresa & Brad Lebel  
Patricia Lindenman  
Lombard Group Companies  
Donna Lombardi  
Michael & Rebecca Lucht  
Fred Luedke  
Marcelo Martins —  
Luso Cleaning Service, LLC  
Bill & Andrea Moschella  
Timothy C. Moynahan  
Barbara Munger  
NorcomCT  
Janet Orozco  
Chuck Pagano  
Thomas G. Parisot  
Maureen (Molly) Perkins &  
Curt Robinson  
Paul & Kim Pernerewski  
Giuseppe Pisani  
Suzy Ponton  
Atty. Julie M. Porzio &  
Joseph J. Santopietro  
Sheila M. Powers  
Mark & Kathleen Raimo  
Christopher Rempfer  
Carl & Sandra Rosa  
Kathrine E. Rutledge  
Todd Savage  
Danielle & Corey Shaker  
Karen Streeter  
Jim & Jill Strub  
Keith & Carrie Sullivan  
Ric & Lisa Suzio  
Richard Szanto  
Nancy Tortora  
Ray & Maggie Tremaglio

Matthew & Ciara Tryforos  
Rosanne Tullock  
Patricia A. Varanelli  
The Family of Ronald &  
Marie Vitarelli  
Ron & Pam Webb  
Mr. & Mrs. Glenn Wolko  
Dr. Jack Zazzaro &  
Monique Marchetti Zazzaro  
John & Lisa Zinno

---

**PLATINUM**  
**\$500 – \$999**

Mark & Caroline Albini  
Nancy Armour  
Cheryl & Peter Atwood  
Randi Bellemare  
Janet Bergamo  
Mr. & Mrs. Thomas Brayton III  
Donna M. Cameron  
April Carrara  
Marc Casslar  
Frank & Linda Cocca  
Joe & Nan Commendatore  
James Conner  
Dr. & Mrs. Joseph DeMayo  
Mally DeSomma  
Joshua & Iryna Dickinson  
Lisa D'Urso  
Marilyn Failla  
Tom & Mary Sue Feige  
Ann Merriam Feinberg &  
Michael Feinberg  
Jose & Mary Jo Ferrer  
Anne Fitzgerald  
Paul & Lisa Fitzpatrick  
Dr. James Gatling  
Meaghan Gorman  
Salvatore Graziano &  
Francesca Sergi

Greater Waterbury YMCA  
Joe & Debra Gugliotti  
John Gullo  
Evan Hack & Diane D'Isidori  
Charles & Carol Haddad  
Roeland Hancock  
Mr. Charles Henry &  
Ms. Lynn Franklin-Henry  
Mary Hoffnagle  
JC Hopkins  
John L. Hopkins  
Nancy Joaquim  
Roberta E. Leonard  
Robert & Tina Lubus  
Mr. & Mrs. Alceo Lucarelli  
Raymond M. Lynn —  
Raymond Lynn & Associates, LLC  
Main Street Insurance, Inc.  
John & Barbara Mannello  
Mark & Sheree Marcucci  
Luciano & Laurie Marini  
Cynthia Martel  
Mr. & Mrs. Joseph McGrath  
Ron & Lysa Napoli  
Neighborhood Chimney Services  
Jeff Nicholas —  
The Nicholas Law Firm  
Bridget Marie Noujaim  
Selim & Linda Noujaim  
Michael O'Connor  
Erik & Terri Ann Parks  
Jennifer Penhallow  
Donald & Lynnette Piombo  
Craig & Dawn Porter  
Tom & Laurie Porzio  
Dr. Robert & Lauren Porzio  
Karen Powell  
Nancy Rhodes &  
the late Rev. Robert Rhodes

Dr. David Roer &  
Dr. Mary Beth Aquaviva  
Daniel J. Ryan  
Paul Scalzo  
Leslie & David Segal  
Mr. & Mrs. Vincent Siefert  
Matt & Joanne Sivilla  
Christine Sullivan  
Robert J. Terenzi  
Trish Torello  
Efraim Torres III  
Dr. Vincent & Cynthia Tremaglio  
Al & Liz Vagnini  
Fraser & Lynn Ward  
Barry & Donna Winnick  
Mark Yuabov  
Jake Zinno

---

**GOLD**  
**\$250 – 499**

Steven Adamowski  
Gregory Baker  
Elaine Balsley  
Walter Barber  
Antimo Barbieri  
Stacey Benvenuto  
Les & Sara Bluestone  
Andrew J. Bynum  
Theresa A. Caldaroni  
Carolyn Cavanagh  
Loretta Chillemi  
Tess Clark  
NeNean Cofrancesco  
Edward & Karen Costa  
Jack & Bobbi Cremins  
Lois Cugno  
John & Marisa Daddona  
Rachel Desocio  
Tina Dionne

Mark DiVenere  
Joseph & Libby D'Orso  
Brandon & Teresa Dufour  
Bernie & Mary Ann Dzinski  
Debbie Evon  
Sara Farisello  
Don & Lois Fiftal  
Tom Fitzgerald  
Carter Flatt  
Dana Ford  
Gardner R. Friscia  
Lisa Gagliardi  
Bob Garthwait, Jr.  
Thomas & Cheryl Geise  
Rosemary E. Giuliano  
Dianne B. Goodrich  
Moria Graham-Mehmet  
David Heller  
The Hennig Family  
Carolyn Highsmith  
Alan & Deborah Hull  
Joyce Follo Jeffrey  
Doug & Megan Johnson  
Suzanne & Thomas Jokubaitis  
Rosemary Joyce  
Brian Kimmey & Nadia Baz  
Richard Kopf  
Scott H Kurtzman M.D. &  
Wendy S. Kellner M.D.  
Crystal LaBonte  
Jeannine LaLiberte  
Keith & Irene LeBeau  
Marlene & Lawrence Lindquist  
Meg Luddy  
Kathy Luria  
David Macharelli  
Betsy Bucher Maguire  
Ms. Helena Marchant  
John McCormack

John McGovern & Zhou Yu Hui  
Carol Merola  
Charles Monegan  
Barbara Morcey Ascione &  
Andrew Ascione  
Rebecca & Jim Neary  
John & Robin Novak  
Andrea Nyquist & Douglas Penn  
Katie O'Connor  
Kristen Pearson  
Sandra Pettinico  
Judy Pierpont  
Sal Porzio  
Ron Quicquaro —  
Studio Q Architecture  
Bob & Carolyn Quinto  
Karen Raddatz  
John Roberts  
Tim Russell & Bobbie Sue Smart  
Mark & Susanne Russo  
Mr. & Mrs. Anthony Santagata  
Bonnie Sharon  
Rosana Sherrick  
CK Siemon-Siemon Company  
Jeanne Sigel  
Bill & Karen Stowell  
Peggy & Dick Terhune  
Donald Tyler & Denise Barbieri  
Jane Ullrich  
Mary C. Vassallo  
We Do Life Together (ICES Inc.)  
Bob & Dianne Yamin  
Lauren Yarger  
Terri Zembrzuski  
Bob Zinno  
Michael & Caren Ziogas  
Greg & Lezyle Zupkus

## SILVER

\$100-\$249

Andy Adames  
Cheryl Adams  
Sal & Tina Agati  
Vanessa Aguilar  
Jane E. Ambrozaitis  
Raymond & Donna Antonacci  
Catherine Antonelli  
Sarita Arteaga DMD &  
Chris Carrington DDS  
Susan & Victor Atkins  
Jerald Barber  
Vin Barone  
James Basta  
Jane Bate  
Susan Baumann  
Jonathan Beamon  
Kathleen Beatty  
Jeff Beck  
Peter & Ellen Bellinger  
Anthony Benefico  
Philip Benevento  
Dora Bennett  
Becky Berger  
Susan Bernier  
John Birtwell  
Norm & Lin Boisseau  
Charles & Beth Boulrier  
Lorraine S.Brandolini  
Martin & Liz Brayboy  
Elaine Brodeur  
Gary Bruce  
Mr. & Mrs. Karl Buckley  
Richard & Mary Bulkovitch  
Leona F. Burdick  
H. J. Bushka & Sons  
Lumber & Millwork  
Marie Butterly

Annette Buzzanca	Mark DiChiara — Gateway Limousine Inc.	Glenn Heckendorf
Kathy Calo	Bill & Kathlyn DiCristofaro	Eric Herst
David & Marie Cameron	Terry & Sharon Dion	Patrick Herzing
Nicole Campbell	DiTota Business Consultants, LLC	Pasterant Hill
Patricia Campbell	Pattie Dunn	Paul & Marcia Hincley
Gustav Cariglio	Ed & Pat Dwyer	Helana Hoover-Litty
Mark & Constance Carrington	Marci Dwyer	Renee Isabelle
John E. Carter	Emily's Catering Group	Jaci Carroll Staffing
Naty & Tony Carter	Larry & Carla Erikson	Marcella Jackson
Lori Cassidy	Jason & Debbie Esposito	Dr. & Mrs. John Kanca III
Ann Cianciolo	Dana Finello	Jeffery & Jeanne Katz
Michael & Lynn Cipriano	Ross Fingold	Thomas Kelleher
Vincent & Dana Cipriano	Arthur Fino	Marisuzan Kennedy
Donna Civitello	The Flowers Family	Amanda Klimak
Crystal Clark	Beverly Fortin	David F. Konopelski
William F. Cone	Alexandra Foster	Ed & Loretta Korzon
Ronald Conti	Atty. Joseph D. Foti	Waldemar & Judith Kostrzewa
Jane T. Cooney	Ron & Sandy Franco	Jamie Kucher
Mr. & Mrs. Jeffrey Corcoran	Margy Fraulo	Kayla Kusy
Paul Corey	Carrie Fuller-McMahon	James & Susan LaBrecque
Carol & Jack Costello	Peter & Sylvia Galullo	George & Stacy LaCapra
Joanne Criscione	Catherine Garten	James & Elizabeth Lamoin
Marylou Cunningham	Francis & Diane Geigle	Troy & Maria LaMontagne
Peter & Lauren D'Amato	Susan Gill	Janet Landry
Brad Dancer	Julie & Patrick Gilligan	Carol Lanese
Ken & Jan Danisevich	Rich & Diane Godbout	Jane M. Lescoe
Jean D'Aversa	Carlo Greco	Charlotte LeVasseur
Joe DeCicco	Laurie Greco	Peter & Kathy Lombardoizzi
Adele Defrancesco	Lori & Arthur Greene	Nick & Terry Longo
Laurie & Lou Delage	Mark & Rita Greene	Victor Lopez, Jr.
Genevieve O. Delkescamp	Sandra Greene	Tina LoRusso
Vincent DeLuise	Nancy Gubbiotti	Scott Lowry
Fiona De Merell	Erin Gunther	James Lumia
Kim Demsey	Grace & David Halloran	Rick & Joanne Maccione
Deborah DeRienz	Rich & Joan Hamel	Donald W. Maclean
Dave DeRosa	Matthew Hamill	Michael Madow
James Devine	Bob & Cindy Hart	Dawn L. Maiorano
Mike DeVivo	Edward & Lynn Hatfield	Nicki Maiorano

Brian Malarkey & Jayne Balaguer  
Vera Maltsev  
William Manthey  
Thomas & Maryann Maroney  
Eric Martin  
Peggy Martin  
Mattatuck Industrial Scrap Metal  
Margaret McCabe  
McGrail Family,  
Waterbury & Detroit  
Fran e. McIntyre-Smith  
John & Susan Melillo  
Tim & Sue Mellitt  
Rick Mercier  
Polly Merriman  
David Moody  
Dana Moreira  
Dr. James & Dr. Amanda Nardozi  
William B. Neil  
Laura & Lex Nesta  
Maureen O'Donnell-Gallo  
Edward Ogden  
Lana Ogrodnik  
Ronald & Nancy Omasta  
Diondra Owusu  
Rebecca Parker  
Theresa Pavlik  
Martha Payne  
Lenore Pelosi  
Joy Pendola  
Maureen Pennington  
Adam Pepin  
Nancy Picard  
The Pilarczyk  
Alan Pizzolorusso  
Phyllis Plourde  
Deborah & David Pope  
Mr. & Mrs. Raymond Prifty  
Ron & Janice Pugliese

Velma D. Pugliese  
Rich & Cathi Rappi  
John & Terry Reihl  
John & Sandy Riley  
Mr. & Mrs. Anthony Rinaldi  
Nick & Marylou Rinaldi  
Deirdre Roberts  
Dorothy Rocchio  
Jodie Roden  
Frank Romano  
Corinne Rubbo  
Eileen M. Russo  
Vincent & Dorothy Russo  
Terrence Ryan &  
Elizabeth Whalen  
Stefan J. Rybak  
Cynthia Sage  
Al & Terry Sagendorf  
Susan Salcito  
Veckman Santiago  
Anna Savastano  
Jeannine Schetzen  
Jill & West Schoenfuss  
Janette Schweikher  
Desiree Scime  
Jessica Sereduck  
Mr. & Mrs. John Shanabrough  
Michaela Sheldon  
Teri Sheldon  
Mary Lou Smail  
Eileen Smyth  
Rita Spinella  
Susan Sprano  
Jennifer Stack  
Elaine Stackowicz  
Charles & Eileen Stango  
Allison Starziski  
Jodi Stewart  
Rebekah Stokes

Cathleen Strobel  
Elaine Strobel  
John & Corliss Strumello  
Jim & Maureen Suzio  
Katie Szanto  
Teresa Tamizkar  
Joey Tavera  
Mr. & Mrs. Joseph Tavera  
Christopher Tebeau  
David Theroux  
Joe & Joan Thomas  
Mary Jane & Robert Travers  
Don Travis  
Jane Upton  
Abigail Vacca  
Matthew Vaccarelli  
Carleen Van Blarcom  
Fred Van Scoy III  
William Veits  
Maria Vigliotti  
Dan & Sandy Vollaro  
Al & Sara Washicko  
Waterbury Jiffy Lube  
Andrew C. Wells MD LLC  
David & Lisa Willadsen  
Terry Wynne  
LoriBeth Williams Young  
Peter & Sharon Zilahy

**JOIN OUR  
DONOR LIST &  
HELP US GROW**



# Thomaston Savings Bank is Proud to Support the Palace Theater.



## Thomaston Savings Bank

ThomastonSB.com | 860.283.1874 | Member FDIC



**Bringing You Peace of Mind Without Pests!**

Rodents • Roaches • Wasps • Carpenter Bees • Ticks  
Mosquitoes • Bats • Ants • Termites • Other Pests

**1-888-879-6481**

**envirocarepestcontrol.net**



Springfield, MA



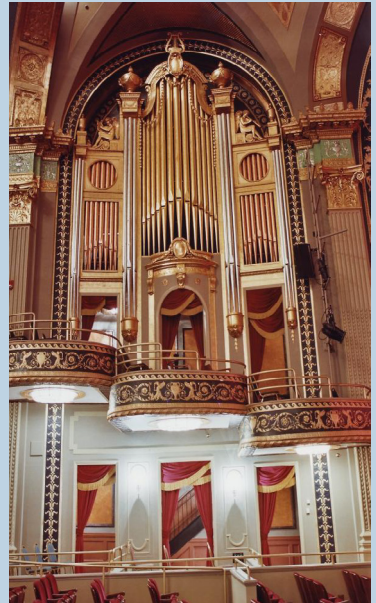
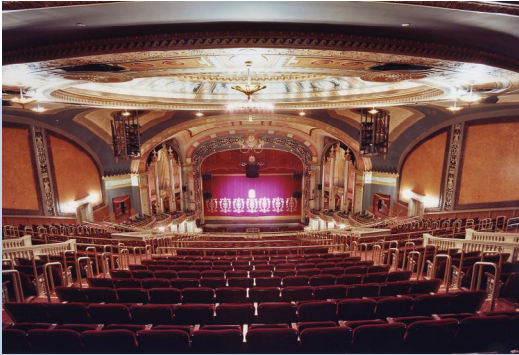
South Eastern, CT



**TOMASSO  
GROUP**

*Est. 1923*

Pleased to Support  
the **Palace Theater**, and  
proud to have been part of its renovation!



One Liberty Square, New Britain CT 06051 Ph: (860) 224-9977

# The Prospect Printing Company

16 Waterbury Rd.  
Prospect, CT 06712

Tel: 203.758.6007  
Fax: 203.758.3349

[www.prospectprinting.net](http://www.prospectprinting.net)  
[info@prospectprinting.net](mailto:info@prospectprinting.net)

**High Quality Offset  
and Digital Printing**

Brochures • Letterheads  
Business Cards • Envelopes  
Banners • Signs • Posters  
Promotional Products  
Variable Data & More!

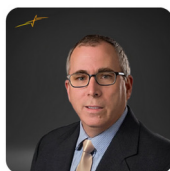


**TRIPLE STITCH™**  
BRAND PROMOTIONS

**800-633-3536**

[sales@triplestitch.com](mailto:sales@triplestitch.com)  
TripleStitch.com  
Prospect, CT 06712

**Custom Apparel &  
Promotional Products**



**Michael Riley**

CFP®, APMA®, ChSNC®, Wealth Advisor  
(P) 860-785-6020 (F) 860-561-1906

(E) [mriley@nstarwp.com](mailto:mriley@nstarwp.com)

Location: 687 Straits Turnpike Middlebury, CT 06762

Securities offered through LPL Financial, Member  
FINRA/SIP



Connecticut's Choice  
for Driver's Education



# *The Easiest Road to a Driver's License*

Driver's education with expert instructors,  
flexible scheduling, and classes that fit  
into your busy life.

**[thenextstreet.com/CT](https://thenextstreet.com/CT)  
860.631.4292**





# **POWER** Your Next Event

WITH THE LEADER IN EVENT PRODUCTION

- ⚡ Audio & Video Production
- ⚡ Lighting & Staging
- ⚡ DJs & Entertainers
- ⚡ Bands & Musicians
- ⚡ Decor & Florals
- ⚡ Photography
- ⚡ Photobooths & Games
- Corporate Events ⚡
- Non-Profit Events ⚡
- Galas & Fund-Raisers ⚡
- Parties & Celebrations ⚡
- Weddings & Family Events ⚡
- Graduations & More ⚡
- Streaming & Virtual Events ⚡



Official Event Production Partner to:



...and serving as A/V production partner for the  
Travelers Championship since 2010!

**Proud to be the Official Event Services Partner  
of the Palace Theater!**

203-250-8500



Cheshire, CT

MOEN®



# TORRICO | BATH & KITCHEN SHOWROOM

OFFERING DECORATIVE PLUMBING & LIGHTING,  
VANITIES, CABINET & DOOR HARDWARE.

VISIT OUR BEAUTIFUL WATERBURY SHOWROOM  
100 NORTH ELM STREET

Since 1917 • [www.TorrcoDesignCenter.com](http://www.TorrcoDesignCenter.com) • 203.756.3641

STAMFORD • FAIRFIELD • DANBURY • NEW HAVEN • EAST WINDSOR • WATERBURY



# Got an eye on business expansion?

At Ion Bank, we see your dreams, your realities, your day-to-day, your future, and every big decision along the way. *We are always looking out for you!*

Cash Management • SBA Loans • Real Estate & Expansion • Equipment Financing

**ion** BANK™

Visit a branch or call us at 203.729.4442 today!