

SHOW NOTES

PALACE THEATER PROGRAM BOOK

HER STORY. HER HITS. HER LEGEND.





Celebrating your tireless
**COMMITMENT
TO OTHERS.**

Every day, you help make our community a better place to live. We do our best to support you, your organization and the people you serve. We're always proud to help our neighbors.

WebsterBank®

[websterbank.com](https://www.websterbank.com)



Post
UNIVERSITY®
EST. 1890



**Extraordinary
Educational Experience**

Ranked Among The Best
By US News & World Report

Post Makes It Personal
Post.edu



MERIDEN
NEW HAVEN • WALLINGFORD
MILFORD • DERBY

WWW.SUZIOYORKHILL.COM
888-SUZIOCO • 888-789-4626

TRACY | DRISCOLL
 Protecting how you work, live and play

Tracy Driscoll offers professional guidance and a variety of products to help you meet your individual and business needs. Following is a list of products we have available:

Commercial Insurance	Personal Insurance	Life and Employee Benefits	Wealth Management
~ Property	~ Auto	~ Individual Health	~ Traditional IRA
~ Liability	~ Home / Condo / Renters	~ Group Health	~ Roth IRA
~ Workers Compensation	~ Umbrella	~ Medicare Advantage	~ Simple IRA
~ Auto	~ Watercraft/Yachts	~ Medicare Supplement	~ Annuities
~ EPLI	~ Motorhomes	~ Dental	~ 401k Plan
~ Contractor Bonds	~ Antique Auto	~ Life Insurance	~ Term Life
~ Construction Equipment	~ Motorcycle	~ Short and Long Term Disability	~ Whole Life
~ Errors and Omissions	~ Waterfront Property	~ Voluntary Benefits	~ Long Term Care
~ Directors and Officers	~ High Valued Properties	~ HSA / FSA / HRA	~ 529 College Planning
~ Cyber	~ Worksite Programs	~ COBRA Services	

Contact: **Tracy, Driscoll & Co., Inc.**
 O: 860.589.3434
 10 Main Street, 4th Floor, Bristol, CT. 06010
www.tracy-driscoll.com

Securities offered through Registered Representatives of Cambridge Investment Research, Inc., a broker-dealer, member of FINRA / SIPC. Advisory services through Ohanesian / Lecours, a registered Investment Advisor. Cambridge and Ohanesian / Lecours are not affiliated

B&Z MANAGEMENT PROUDLY SUPPORTS THE PALACE THEATER

LOCALLY OWNED AND OPERATED
 DUNKIN' LOCATIONS IN THE
 GREATER WATERBURY AREA

DUNKIN'



Expert cancer care
RIGHT HERE

THE HAROLD LEEVER REGIONAL CANCER CENTER
 (203) 575-5555 • leevecancercenter.org



A Partnership Worth Celebrating.

Products and services
that help you succeed.

- Personal Banking & Loans
- Business Banking & Loans
- Mortgages & Equity Loans
- Community Support

IvesBank.com

844.723.2265

NMLS #763547

Member FDIC

The logo features a stylized blue icon of a building with three vertical columns on the left, followed by the words "IVES BANK" in a large, blue, serif font.



Experience the Award-Winning Care at Saint Mary's Hospital

This year we have been awarded both a Four-Star Quality Rating from the Centers of Medicare and Medicaid Services (CMS) and our third straight "A" from the Leapfrog Hospital Safety Grade.

Recognition for our quality care, safety and patient satisfaction shows that you are our top priority!



Saint Mary's Hospital
Trinity Health

56 Franklin Street, Waterbury, Connecticut 06706

TrinityHealthOfNE.org



For over 175 years, we've been at the heart of Waterbury.

As a 6th generation family business, we believe in expanding possibilities for our communities through volunteer work, direct investment and environmental stewardship.



Learn about our legacy.



Special Thank You

TO OUR 20TH YEAR PROGRAM+ ADVERTISERS



WebsterBank
Broadway Series

ionBANK

IVES BANK

Post
UNIVERSITY®
EST. 1890



**CENTURION WEALTH
MANAGEMENT**

MONTAGNO INSURANCE INC.

**CLOCKTOWN BREWING
COMPANY**

PEPSI COLA OF BRISTOL

**DIAGNOSTIC RADIOLOGY
ASSOCIATES**

POST UNIVERSITY

**DUNKIN' —
B&Z MANAGEMENT**

**TRINITY HEALTH
OF NEW ENGLAND —
ST. MARY'S HOSPITAL**

**HAROLD LEEVER REGIONAL
CANCER CENTER**

TOMASSO GROUP

HUBBARD-HALL

TORRICO

MATHNASIUM



DON'T MISS A BEAT!

WITH SENNHEISER MOBILECONNECT

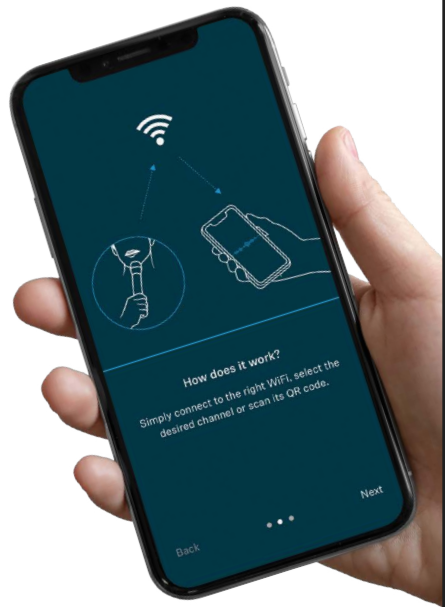
Have you ever struggled to hear a show at the theater?
**LISTEN YOUR WAY — WITH LIVE AUDIO STREAMING
DIRECTLY TO YOUR PHONE!**

Download *Sennheiser MobileConnect* to enhance your theater experience.

NOTE: See us at Coat Check before the show begins to complete set-up.

The *Sennheiser MobileConnect* application on your smartphone connects audio right to your Bluetooth-enabled hearing aids, cochlear implants or headphones.

This service is available for every performance.



ENJOY DINNER & A SHOW!

CLOCKTOWN BREWING COMPANY

TIME BEST SPENT

From crafting the finest clocks
to crafting the finest beer

lively taproom | family friendly | live music
variety of craft beers and specialty cocktails
wood-fired pizzas and classic pub fare

135 South Main St, Thomaston
clocktownbrewingco.com
(860) 880-8240

Hours:

Wednesday 4-9 pm
Thursday 4-10 pm
Friday-Saturday Noon-10 pm
Sunday 11am-8pm (Brunch 11 am-3 pm)



great food, great atmosphere
AND WALKING DISTANCE TO THE PALACE!

Signatures Restaurant

203-575-1190
29 Leavenworth St.
Waterbury, CT 06702



PALACE
THEATER

Poli Club PRE-SHOW DINING

The Poli Club is the theater's elegant, catered dining room open for dinner before select Broadway performances. The Poli Club offers a creative & delicious prix fixe menu from Verbena Caterers.

Featuring a first class wine list and top shelf liquors, the Poli Club bar is open to members for pre-show cocktails and VIP intermission beverage services.

TO LEARN MORE ABOUT MEMBERSHIP:
CALL NATALIE LAWLOR 203.346.2009
EMAIL LAWLOR@PALACETHEATERCT.ORG

BOOK YOUR SPECIAL EVENTS HERE!



88 KEYS

on Main

THE PERFECT
PRIVATE PARTY EXPERIENCE

FAMILY · CORPORATE · SPECIAL EVENTS
FRESH SIGNATURE PLATES · CRAFT COCKTAILS
LIVE MUSIC OPTIONS

BOOK US!

860.417.2414
88KEYSPIANOBAR.COM
1278 MAIN STREET
WATERTOWN, CT



LETTER FROM THE CHAIR

As the Chair of the Board of Directors of the Palace Theater, I have the great pleasure and honor of welcoming you to this beautiful, treasured theater. This season is a milestone one, as we are celebrating our 20th Anniversary year!

Just over two decades ago, a group of dedicated citizens, together with local and state leaders, organized to restore and bring life back to this historic facility, which had been shuttered for around fifteen years. On November 12, 2004, after completing an extensive renovation, the Palace Theater reopened its doors to the public, showcasing its new state-of-the-art stage and perfectly restored lobby spaces.



In the past twenty years, we have welcomed well over two million people to our performances, presentations, and events, introduced thousands of young students to the excitement of live theater, and served as the premier arts and cultural destination for the Greater Waterbury community and its surrounding towns.

In addition to our capacity as a performance venue, we are a cultural center, a reception facility for special events, an education space, and we also serve as the performance home for the Waterbury Arts Magnet School.

We have achieved a great deal in twenty years, and there remains much opportunity for growth in the decades ahead. We look forward to accomplishing this work alongside you, our patrons and community partners. On behalf of the Board of Directors and the staff, we thank you for joining us and supporting the arts, whether you are a 20-year supporter or a first-time visitor.

Welcome to the Palace!

Sincerely,

A handwritten signature in black ink, appearing to read "Martin G. Morgado". The signature is fluid and cursive, with a large, stylized initial "M".

Martin G. Morgado
Chair of the Board of Directors

PUT YOUR BRAND IN THE SPOTLIGHT!

ADVERTISE WITH US!

INTERESTED IN A PROGRAM AD?

Contact Natalie Lawlor
203.346.2009 • lawlor@palacetheaterct.org



EBM

IT Solutions Provider



Cybersecurity & Managed IT Services

Our approach is simple: we provide the best advice and innovative technology with exceptional customer service.

ebmusa.com | Call us at 203-254-8500



**Gaffney, Bennett
and Associates, Inc.**
Government Relations and Political Consulting

One Liberty Square
New Britain, CT 06051
860-229-0301



TRIPLE STITCH™
BRAND PROMOTIONS

800-633-3536

sales@triplestitch.com

TripleStitch.com

Prospect, CT 06712

**Custom Apparel &
Promotional Products**

LETTER FROM THE CEO

Welcome to the Palace Theater, where “The Beat Goes On,” as it has for the past 20 years!

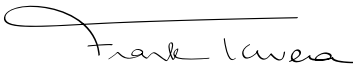
This season, we are celebrating two decades since our restoration and reopening, and we are delighted to have you join us this weekend for *The Cher Show*, part of our 2024–2025 Webster Bank Broadway Series.

Honoring our 20-year (one score) milestone, we are excited to present a special one-night event on May 17, *Broadway Scores!* Featuring selected musical hits from some of the shows that have graced our stage since 2004, performed by the Waterbury Symphony Orchestra and a roster of incredible Broadway performers, *Broadway Scores* promises to be an evening of entertainment, celebration, and memorable music.

Once you’ve been to the Palace, whether you are a performer, volunteer, patron, or community member, you become part of our extended Palace family. We are grateful for all our extended family members and partners, and we would not be here today were it not for the support that each of you has given us.

Thank you for helping us celebrate our 20th Anniversary and supporting the arts. I hope you enjoy the show, and hope to see you on May 17th!

Sincerely,



Frank Tavera
CEO



SHOW INFORMATION

Big League Productions, Inc.

PRESENTS

the
cher
show
a new musical

BOOK BY

RICK ELICE

STARRING

CATHERINE ARIALE

ELLA PEREZ

MORGAN SCOTT

AND

FRANKIE MARASA 5TH

TYLER PIRRUNG

KRISTIN ROSE KELLEHER

ZACK ZAROMATIDIS

WITH

BROOKS ANDREW

ALLI BOSSART

EMMA JADE BRANSON

KEVIN MICHAEL BUCKLEY

SAMANTHA BUTTS

IRAYA CATALINA

GRACE CRUGNALE

CATHERINE GARCÍA

KIRSTIN ANGELINA HENRY

MASON DERRECK LEWIS

CLAIRE MARSHALL

HANS MUEH

JONAH NASH

SYDNEY ROSE

BLAISE ROSSMANN

MARK TRAN RUSS

SET DESIGN

KELLY JAMES TIGHE

LIGHTING DESIGN

CHARLIE MORRISON

SOUND DESIGN

DANIEL LUNDBERG

VIDEO DESIGN

JONATHAN INFANTE
KELLY JAMES TIGHE

WIG DESIGN

ROXANNE DE LUNA

COSTUME COORDINATOR

JANINE LOESCH

CASTING DIRECTOR

ALISON FRANCK, C.S.A.

TECHNICAL SUPERVISOR

ANTHONY LOPEZ

MUSIC SUPERVISOR

KRISTIN STOWELL

MUSICAL DIRECTOR

SARAH WUSSOW

VOCAL, SONG, & INCIDENTAL
MUSIC ARRANGEMENTS

DARYL WATERS

DANCE MUSIC ARRANGEMENTS

ZANE MARK AND DARYL WATERS

TOUR PRESS & MARKETING

TRUE MARKETING
WENDY J. CONNOR

PRODUCTION STAGE MANAGER

KAITLIN BUTTOFUCO

ASSOCIATE PRODUCER

SOPHIE WHITFIELD

GENERAL/COMPANY
MANAGEMENT

BIG LEAGUE PRODUCTIONS
ZACH KROHN
OWEN O'BRIEN

ORIGINAL BROADWAY AND TOUR COSTUME DESIGN BY
BOB MACKIE

EXECUTIVE PRODUCER

DANIEL SHER

CHOREOGRAPHY BY

ANTOINETTE DIPIETROPOLO

DIRECTION BY

CASEY HUSHION

TOUR BOOKING BY TRACEY MCFARLAND, BROADWAY & BEYOND THEATRICALS

ORIGINAL BROADWAY PRODUCTION PRODUCED BY FLODY SUAREZ, JEFFERY SELLER AND CHER
COSTUMES, WIGS, AND PROPS ARE LEASED THROUGH THE COURTESY OF OGUNQUIT PLAYHOUSE, OGUNQUIT, MAINE
THE CHER SHOW IS PRESENTED THROUGH SPECIAL ARRANGEMENT WITH BROADWAY LICENSING GLOBAL,
440 PARK AVENUE SOUTH, 11TH FLOOR, NEW YORK, NY 10016, WWW.BROADWAYLICENSING.COM.

MUSICAL NUMBERS

ACT ONE

If I Could Turn Back Time (Part 1).....	Star, Ensemble
If I Could Turn Back Time (Part 2).....	Star, Babe, Lady
Half Breed	Georgia, Babe
A Dream Is A Wish Your Heart Makes.....	Babe, Star
You Better Sit Down Kid	Georgia
Half Breed (Concert Version).....	Babe, Star, Lady
Da Doo Ron Ron	Babe, Lady, Star, Gracia, Fanita, Ensemble
Be My Baby	Babe, Gracia, Fanita
The Shoop Shoop Song	Babe, Bridget, Colleen, Star, Lady, Girl Group
I Like It Like That	Dave Clark Five
I Got You Babe	Babe, Sonny
Little Man.....	Sonny
When The Money's Gone.....	Babe, Sonny, Lady, Ensemble
Vamp	Star
Ain't Nobody's Business	Bob Mackie, Lady, Babe, Star, Ensemble
Bang Bang (My Baby Shot Me Down)	Lady
Living In A House Divided.....	Star, Babe, Lady, Sonny
Bang Bang (Reprise)	Lady, Star, Ensemble
Believe (Ballad)	Star, Babe, Lady
Song For The Lonely	Star, Lady, Babe

15-MINUTE INTERMISSION

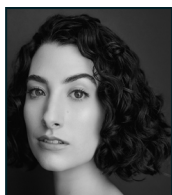
ACT TWO

All I Ever Need Is You	Sonny, Lady
Heart Of Stone	Lucille Ball, Lady
Gypsies, Tramps and Thieves.....	Star
Midnight Rider/Ramblin' Man	Gregg
Just Like Jesse James	Star, Gregg, Ensemble
Dark Lady.....	Sonny, Gregg, Ensemble
Baby, Don't Go	Sonny
Strong Enough	Lady, Star
When The Money's Gone (Part 2).....	Star
The Way Of Love	Star
The Beat Goes On/It Don't Come Easy.....	Babe, Mackie, Assistant, Ensemble, Star
I Found Someone (Part 1)	Star
I Found Someone (Part 2)	Star, Rob
I Found Someone (Part 3)	Star
I Got You Babe (Reprise)	Sonny, Star
You Haven't Seen The Last Of Me	Star, Lady, Babe
A Dream Is A Wish (Reprise).....	Babe, Star, Georgia
Finale.....	Star, Babe, Lady, Ensemble
Take Me Home — Bows	Company



The photographing or sound recording of any performance inside this theater, without the written permission of the management, is prohibited by law. Violators may be punished by ejection and violations may render the offender liable for money damages.

CAST



Catherine Ariale



Ella Perez



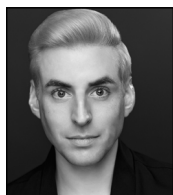
Morgan Scott



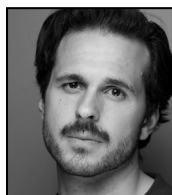
Frankie Marasa 5th



Kristin Rose Kelleher



Tyler Pirrung



Zack Zaromatidis



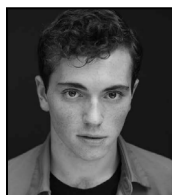
Brooks Andrew



Alli Bossart



Emma Jade Branson



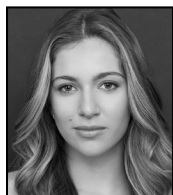
Kevin Michael Buckley



Samantha Butts



Iraya Catalina



Grace Crugnale



Catherine Garcia



Kirstin Angelina Henry



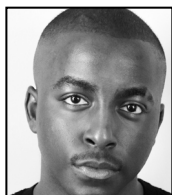
Mason Derreck Lewis



Claire Marshall



Hans Mueh



Jonah Nash



Sydney Rose



Blaise Rossmann



Mark Tran Russ

CAST

Star	MORGAN SCOTT
Lady.....	CATHERINE ARIALE
Babe.....	ELLA PEREZ
Sonny Bono.....	FRANKIE MARASA 5TH
Georgia Holt/Lucille Ball	KRISTIN ROSE KELLEHER
Bob Mackie/Robert Altman/Frank.....	TYLER PIRRUNG
Gregg Allman/John Southall.....	ZACK ZAROMATIDIS
Rob Camilletti.....	BROOKS ANDREW
Lee/Top of the Pops Host	MASON DERRECK LEWIS
Bridget	KIRSTIN ANGELINA HENRY
Colleen.....	CATHERINE GARCÍA
Phil Spector/Sid the Censor/Male ET Reporter.....	KEVIN MICHAEL BUCKLEY
Infomercial Director/Digby the Writer	MARK TRAN RUSS
Studio Singers.....	IRAYA CATALINA, GRACE CRUGNALE
Girl Group.....	GRACE CRUGNALE, CLAIRE MARSHALL, SYDNEY ROSE
Dave Clark Five	BROOKS ANDREW, KEVIN MICHAEL BUCKLEY, HANS MUEH, JONAH NASH, MARK TRAN RUSS
Steve the Scribe	HANS MUEH
Bob Mackie's Assistant	JONAH NASH
Dark Lady.....	EMMA JADE BRANSON
Female ET Reporter	SYDNEY ROSE
Ensemble	BROOKS ANDREW, ALLI BOSSART, EMMA JADE BRANSON, KEVIN MICHAEL BUCKLEY, SAMANTHA BUTTS, IRAYA CATALINA, GRACE CRUGNALE, CATHERINE GARCÍA, KIRSTIN ANGELINA HENRY, MASON DERRECK LEWIS, CLAIRE MARSHALL, HANS MUEH, JONAH NASH, SYDNEY ROSE, BLAISE ROSSMANN, MARK TRAN RUSS

UNDERSTUDIES

*Understudies never substitute for the listed performers
unless a specific announcement is made at the time of the appearance.*

For Star—CLAIRE MARSHALL, KRISTIN ROSE KELLEHER
for Lady—CLAIRE MARSHALL, GRACE CRUGNALE
for Babe—KIRSTIN ANGELINA HENRY, CATHERINE GARCIA
for Sonny Bono— KEVIN MICHAEL BUCKLEY, HANS MUEH
for Georgia Holt/Lucille Ball—ALLI BOSSART, CLAIRE MARSHALL
for Bob Mackie/Robert Altman/Frank—MASON DERRECK LEWIS
for Bob Mackie/Frank —BLAISE ROSSMANN
for Robert Altman—BROOKS ANDREW
for Gregg Allman/John Southall—BROOKS ANDREW, HANS MUEH
for Rob Camilletti—MARK TRAN RUSS, HANS MUEH
for Dark Lady—SYDNEY ROSE

SWINGS

ALLI BOSSART, BLAISE ROSSMANN
Dance Captain: MASON DERRECK LEWIS
Assistant Dance Captain: ALLI BOSSART

ORCHESTRA

Conductor/Keyboard 1: SARAH WUSSOW
Assistant Conductor/Keyboard 2: ISABELLA MESENBRINK
Drums—MARC MCDUFF; Bass—CAZ OLKO;
Guitar 1—TIM SCHILLING; Guitar 2—EMMETT SHER; Trumpet—CARLOS RAMOS;
Reeds—HENRY HERNANDEZ; Trombone—SARAH THOMPSON.

WHO'S WHO IN THE CAST

CATHERINE ARIALE (*Lady*) She/Her. Catherine is over the moon to be returning for a second year of tour with *The Cher Show!* Credits: *The Waiting* (Margot), *Sunday in the Park with George* (Yvonne), *Memphis* (Gladys). Pace MT. All my love to Mom, Dad, Austin, and of course, to Cher. @catherineariale

ELLA PEREZ (*Babe*) is so grateful and excited to be back for a second year of Cher! This show and this company is a dream, and she is so excited to be on the road sharing this story with the country again. Favorite credits include *Cabaret* (Emcee), *Proof* (Catherine), and *Company* (Amy). A million hugs and kisses to friends and family who made her believe she could do this for real. Shoutout to the fabric, you are with me forever! And thank you to Cher for being Cher. SUNY Cortland BFA MT Class of 2023. Proudly represented by Wolf Talent Group. ellaperezny.weebly.com, @ellaa.perez

MORGAN SCOTT (*Star*) is both thrilled and humbled to return for year two as the icon that is CHER. Year one taught her more than she can ever say and she is so grateful to be back. Favorite credits: Doctor (*Next to Normal*), Baker's Wife (*Into the Woods*), Gina (*REWIND*); along with bandleading and audiobook narration. Her cup runneth over with gratitude for her family, friends, Nick, Uisge and BBB. @mscott3

FRANKIE MARASA 5TH (*Sonny Bono*) is so excited to be making his National Tour debut! Recent Theatre credits include *Jersey Boys* (Joe Pesci), *Avenue Q* (Princeton), *Into the Woods* (Jack) TV/Film: *Grosse Pointe Garden Society*, *The Electric State*, *Young Dylan*. Many thanks to Michele at Take 3 Talent, Reiser, and most importantly, his family. @thefrankie5

ZACK ZAROMATIDIS (*Gregg Allman/John Southall*) is elated to be back with this fabulous show! Zack is thrilled to be joining the cast of *The Cher Show on Tour!* CREDITS: *Bandstand* (Donny Notiviski — National Tour) *Million Dollar Quartet: Christmas* (Carl

Perkins — National Tour) *The Cher Show* (Rob Camilletti — Ogunquit Playhouse) TV: *Law & Order*. Love to my family, Malia and BLOC agency. IG: @ZackZaro TikTok: @ZackZaroMusic Let's rock!

TYLER PIRRUNG (*Bob Mackie/Robert Altman/Frank*) is absolutely bedazzled to continue spreading Mackie Magic around the country for another season! Some favorite credits: *Elf* (Buddy — Arizona Broadway Theatre), *Jersey Boys* (Bob Gaudio — Little Theatre on the Square & Bob Crewe — City Springs Theatre Co.), *Spamalot* (Historian — City Springs Theatre Co.), *Cabaret* (Emcee — Glow Lyric Theatre). Much love to his friends and family for their endless support and the MTA fam! IG: @tylerpirrung

KRISTIN ROSE KELLEHER (*Georgia Holt/Lucille Ball, u/s Star*) is thrilled to be making her National Tour debut with *The Cher Show!* Most recently, Kristin was seen as Donna in *MAMMA MIA!* with Royal Caribbean International. Other favorite credits include Factory Girl in *Les Miserables* (Riverside Theatre), Tanya in *MAMMA MIA!* (Royal Caribbean), Cassandra Austen in *Austen's Pride* (ACT of CT), and *South Pacific* (Ogunquit Playhouse). Endless gratitude for the support of her family and friends. Big thanks to the team at Avalon! For Dad. IG: @kristinrosekelleher

BROOKS ANDREW (*Ensemble, Rob Camilletti, Dave Clark Five, u/s Gregg Allman/John Southall, u/s Robert Altman*). National Tour Debut! Select Regional Credits: *Disney's The Little Mermaid* (Prince Eric), *Catch Me If You Can* (Ens/Frank Abagnale Alternate), *Grease* (Doody). Proud graduate of Elon University's Music Theatre program. Love to Mom, Dad, James, Will, Rugby, and all who I've been blessed to call a friend along the way. @brooks_andrew

ALLI BOSSART (*Swing, u/s Georgia Holt/Lucille Ball*) is overjoyed to be making her National Tour debut! Regional: *Crazy for You* (Ogunquit Playhouse), *Cabaret* (Coachella Valley Repertory), *Cinderella*, *Sister Act*

WHO'S WHO IN THE CAST

(Summer Repertory Theatre Festival), and *The Music Man* (Segerstrom Center Pacific Symphony). BFA: CCM. Love and gratitude to family, friends, and Carson Kolker Org.

EMMA JADE BRANSON (*Ensemble, Dark Lady*) is very happy to be returning for her second season with *The Cher Show* National Tour! Proud Eastern Washington native and alumnus of Boston Conservatory at Berklee. Emma has performed across the U.S. and internationally with Complexions Contemporary Ballet. Thank you to the entire creative team for this opportunity! All my love to my family for their endless support IG: @emmabranson

KEVIN MICHAEL BUCKLEY (*Ensemble, Phil Spector/Sid the Censor/Male ET Reporter, Dave Clark Five, u/s Sonny Bono*) is thrilled to be making his national tour debut. In addition to acting, he writes/produces his own pop music as 'Kev!' on all streaming platforms. Some credits include: *The Cher Show* (Gateway Playhouse), *Guys & Dolls* (Theatre Aspen), & *The Wizard of Oz* (Vital Theatre). Thank you to my family, friends, teachers, and agents at UIA. Congratulations to the entire cast, crew, and creative team. @kevin_m_buckley

SAMANTHA BUTTS (*Ensemble*) is thrilled to be continuing with the company for her second year! Born and raised in Columbus, Ohio and a BFA graduate from Marymount Manhattan College. Credits: *Radio City Christmas Spectacular* (Rockette), *Destiny Of Desire* (Assistant Choreographer — The Old Globe Theater), *Women On Fire* (Ensemble — Royal Family Productions) Love to her amazing parents Wendy and Erik! @samanthaniicolee www.samanthabutts.net

IRAYA CATALINA (*Ensemble, Studio Singer*) is incredibly honored to make their national tour debut with *The Cher Show*! Favorite credits include *The Marvelous Wonderettes* (Cindy Lou), *Cats* (Demeter), and *Chicago* (Annie, U/S Velma). Viterbo MT c/o '23. All the love to their mom, Ninfa. 1 Cor 16:14. irayacatalina.com @irayacatalina

GRACE CRUGNALE (*Ensemble, Studio Singer, Girl Group, u/s Lady*). National tour debut! Credits: *Grease* (Marty), *Cats* (Cassandra u/s Bombalurina & Demeter), *Catch Me If You Can*. Grace also released her first EP of Christmas music in 2022, and her version of "Christmas (Baby Please Come Home)" was featured in the 2023 Netflix original "Best. Christmas. Ever!"; available to listen wherever you stream music. All my love to The Hybrid Agency, Friends and Family, and if you're reading this I love you too!! @gracecrugnale

CATHERINE GARCÍA (*Ensemble, Colleen, u/s Babe*). National tour debut! Regional: *West Side Story* (Anita), *Flashdance* (Alex Owens), *Seven Brides for Seven Brothers* (Sarah), *9 to 5* (Maria, Judy U/S). Oklahoma City University graduate. Thanks to Bloc Talent and the *The Cher Show* team! Love to my family, Dr. C, and Ethan. Alla famiglia!

KIRSTIN ANGELINA HENRY (*Ensemble, Bridget, u/s Babe*) is a proud boricua from Cleveland, Ohio. Other credits include *In The Heights* (Carla), *Guys and Dolls* (Sarah Brown), *West Side Story* (Rosalia), and *BKLYN* (Brooklyn). She thanks her dear friends, family, and Pantera Murphy the Agency for their constant and unwavering support. For her Angels. #TPOG kirstinangelinahenry.com

MASON DERRECK LEWIS (*Ensemble, Lee/ Top of the Pops Host, u/s Bob Mackie/Robert Altman/Frank, Dance Captain*) is stoked to be back on the road with *The Cher Show*! Some favorite credits: *Pippin* (National Tour — Manson Trio, Pippin & Lewis u/s), *Mary Poppins* (City Springs Theater), Singer/Dancer with Norwegian Creative Studios. Represented by Jim Keith at MTA. I love you, Stephen! @masondlewis / www.masondlewis.com

CLAIRE MARSHALL (*Ensemble, Girl Group, u/s Georgia Holt/Lucille Ball, u/s Star, u/s Lady*) (she/her) is a California girl making her national tour debut! BFA Musical Theatre & Minor in Dance from Missouri State University (go bears!). Favorite credits include *Xanadu* (Kira), *Anything Goes*

WHO'S WHO IN THE CAST

(Virtue, Reno U/S), *A Chorus Line* (Judy Turner), and *Crazy for You* (Dance Captain). @claire.m__ claire-marshall.net

HANS MUEH (*Ensemble, Dave Clark Five, Steve the Scribe, u/s Sonny Bono, u/s Rob Camilletti, u/s Gregg Allman/John Southall*) is excited to be making his national tour debut! Freshly graduated from Marymount Manhattan College with a BFA in Musical Theater and having since played Drew in *Rock of Ages* at the Numerica PAC in Washington, he'd like to thank and acknowledge his family, friends, and educators for getting him so far! @the_daily_muehs

JONAH NASH (*Ensemble, Dave Clark Five, Bob Mackie's Assistant*) (they/he) is a proud Southern native from Atlanta, Georgia. Tours: *Mean Girls* (Ensemble/Damian US), *A Chorus Line: Japan* (Richie). Regional: CAPRI: World Premiere, *Beautiful* (Asolo Rep) & *The Bodyguard* (TBTS). Huge thanks to God, Team Nash and The Collective Talent for their love & support! @jonahrnash

SYDNEY ROSE (*Ensemble, Girl Group, Female ET Reporter, u/s Dark Lady*) is thrilled to be going on her first tour with *The Cher Show!* She recently received her BFA in Music Theatre from The Hartt School. Credits include: *The Little Mermaid* (Ariel) at New Paradigm Theatre. Readings: *Little Miss Perfect* (Ensemble) at the Goodspeed Opera House. Sydney would like to thank her amazing reps Katie and Shana for all of their love and support! She would also like to give thanks to her family, friends, mentors, and the entire team of *The Cher Show!* "If you really want something you can figure out how to make it happen." – Cher @sydneyyrose

BLAISE ROSSMANN (*Swing, u/s Bob Mackie, Frank*) is thrilled to turn back time! National Tour: *Pretty Woman The Musical*. International Tour: *Pretty Woman The Musical*. Regional: MTWichita, Theatre By The Sea, Syracuse Stage, The Glimmerglass Festival. BFA, Syracuse University '24; The LINK Program, Class 6. Love and thank you's to my family, friends, and The Collective Talent Agency! @blaiserossmann

MARK TRAN RUSS (*Ensemble, Infomercial Director/Digby the Writer, Dave Clark Five, u/s Rob Camilletti*) is so excited to be back on *The Cher Show* for its second year. Regional: *Annie* (The Muny), *White Christmas, Funny Girl* (Maine State Music Theatre), and *Beauty and the Beast* (Engeman Theatre). BFA Shenandoah '23. So much love for his family, friends, and the CTG fam! marktranruss.com / @markruss19

RICK ELICE (*Book*). *Jersey Boys*, Rick's first Broadway credit, co-authored with Marshall Brickman, won the Tony Award®, the Grammy Award® and the Olivier Award for Best Musical, and is in the record books as the twelfth longest-running show in Broadway history. With Marshall Brickman and Andrew Lippa, he wrote *The Addams Family*, starring Nathan Lane and Bebe Neuwirth. For the past five years, *The Addams Family* has been the number one or number two most licensed musical in North America. His first play, *Peter and the Starcatcher*, directed by Roger Rees and Alex Timbers, received more Tony Award® nominations than any American play in Broadway history, and won five 2012 Tony Awards®. For the past six years, the play has consistently been in the top five most produced plays in North America. Rick also wrote the double Tony® Award-winning *The Cher Show* for Broadway, directed by Jason Moore; the world premiere at Paper Mill Playhouse of a new musical, *My Very Own British Invasion*, directed by Jerry Mitchell; the world premiere at The Old Globe of a new musical, *Dog and Pony*, with music and lyrics by Michael Patrick Walker; and the world premiere of a new musical, *Turn of the Century*, co-authored with Marshall Brickman, directed by Tommy Tune. Current projects include *The Princess Bride* for Disney, and *Smash* for Robert Greenblatt, Neil Meron, and Steven Spielberg with Bob Martin; *Monopoly*, for Hasbro, with David Rossmer and Dan Lipton; and *Mad Season*, with Rob Thomas, Matt Serletic and Matt Walden of Matchbox Twenty, directed by Schele Williams. Rick is also adapting Sara Gruen's popular novel *Water for Elephants* for the stage with the acclaimed theater collective,

WHO'S WHO IN THE CAST

Pig Pen, directed by Jessica Stone; and writing an entirely original musical (!) based on the rivalry between Darwin and Roget, love, death, madness and the creation of Roget's Thesaurus, with 2021 Ed Kleban Award winner, Benjamin Scheuer. Rick's book, *Finding Roger, An Improbably Theatrical Love Story*, a tribute to his late husband, Roger Rees, is published by Kingswell.

CASEY HUSHION (*Direction*). Broadway: Associate/Resident Director of *Mean Girls*, *Aladdin*, *The Prom*, *In The Heights*, *Elf*, *The Drowsy Chaperone*, *To Be Or Not to Be* and *Good Vibrations*. Other New York credits include *Call Me Madam* (Encores) and *Fat Camp*. Upcoming projects: National Tour of the new hit play *Clue*, which premiered at Cleveland Playhouse and *Mystic Pizza*, slated to launch a tour out of La Mirada Theatre. Also upcoming, *Beautiful* at Paper Mill Playhouse, where she has also directed *Murder On The Orient Express*, *A Jolly Holiday* and *Beehive*. Casey has directed regionally at George Street Playhouse, Goodspeed Opera House, Walnut Street Theatre, Riverside Theatre, Philadelphia Theatre Company and many more. Artistic Director of North Carolina Theatre for ten years. Television: *Unbreakable Kimmy Schmidt*, *The Tonight Show*, *Good Morning America*, *The View*, *The Late Show with Stephen Colbert*, *NBC Special One Night Only: The Best of Broadway*. Love to Marc and her three kids, Lincoln, Violet and Jane. www.caseyhushion.com

ANTOINETTE DIPIETROPOLO (*Choreography*). Officially the first choreographer in the country of Saudi Arabia. Choreographer, *Fame* US Tour; *Annie*, Mundy; *Candide*, starring George Hearn, Rita Moreno, San Francisco Opera; *Big Apple Circus* In NYC; As Director/Choreographer *Ragtime*, Lyric Stage (nominated in 14 categories for the Theatre League Awards); *Ragtime*, North Carolina Theatre, (Winner Best Choreographer, Triangle Theatre Award); *Legally Blonde*, *Mamma Mia*, *Hairspray*, Argyle Theater; *Jersey Boys* WPPAC; Director, US Tour MasterChef

Live; International Tour of *Got Talent Live* www.AntoinetteDiPietropolo.com follow me @antoinettedip

KELLY JAMES TIGHE (*Set Design and Co-Video Design*). Off-Broadway/national tours: *Martin Luther on Trial*, *Shadowlands*, *The Most Reluctant Convert*, *The Great Divorce*, *The Fantasticks*, *Almost Heaven*, *Movin' Out*, *Shear Madness*, *Cats*. Regional: Disney Theatrical, Paper Mill Playhouse, San Jose Repertory Theatre, Laguna Playhouse, Center REPeritory Company, SlowBurn Theater, Arts Center of Coastal Carolina, TUTS, Gateway Playhouse, Broadway By the Bay, Contra Costa Musical Theatre, Ray of Light Theatre. Kelly's theatrical work is published in the textbook *Scene Design and Stage Lighting* and his work as an illustrator has been published in *Mooseltoe*, *A Moose and a Dream*. Awards/recognitions: SF Bay Area Theatre Critics Circle, DramaLogue, and Shellie Awards. IG: [kellyjtighe](https://www.instagram.com/kellyjtighe) web: kjtdesign.com

BOB MACKIE (*Original Broadway and Tour Costume Design*). Costume and fashion designer Bob Mackie is a nine-time Emmy® Award winner, Geoffrey Beene CFDA Lifetime Achievement Award recipient, and has three Oscar nominations. Most recently he received a 2019 Tony® Award, Drama Desk Award, and Outer Critics Circle Award for his work on *The Cher Show*. His Broadway credits include *Moon Over Buffalo* and *Putting It Together*, starring Carol Burnett, *Best Little Whorehouse Goes Public*, *Minnelli on Minnelli*, *Lorelei* with Carol Channing, and *On the Town* with Bernadette Peters and Phyllis Newman. Broadway on television: *Once Upon a Mattress* starring Carol Burnett, *Gypsy* starring Bette Midler, *Carousel*, *Brigadoon*, *Of Thee I Sing*, and *Kismet*. His inventive and memorable designs have helped raise entertainers like Tina Turner, Diana Ross, Cher, Elton John, Ann-Margret, Bernadette Peters, Mitzi Gaynor, Carol Burnett, Bette Midler, Pink, and Cher to iconic status both onscreen and off.

WHO'S WHO IN THE CAST

CHARLIE MORRISON (*Lighting Design*). NYC/National/International tours: *Disney's The Little Mermaid*, *A Christmas Story*, *How the Grinch Stole Christmas! The Musical*, *A Chorus Line*, *Chitty Chitty Bang Bang*, *Miss Saigon*, *Disney's Aida*, *The Producers*, *Man of La Mancha*, *Guys and Dolls*, *Groovallou*, *Hello, Dolly!*, *My Fair Lady*, *The King and I*, *Spelling Bee*, *Gypsy*, *42nd Street*, *Smokey Joe's Cafe*, *The Who's Tommy*, *Titanic*, *The Music Man* and many others. Regional: Paper Mill Playhouse, Guthrie Theater, Shakespeare Theatre Company, Goodspeed Musicals, Seattle Repertory, Seattle 5th Avenue, Broadway Sacramento, Theatre Under the Stars, Dallas Summer Musicals, Kansas City Starlight, Pittsburgh CLO, George Street Playhouse, North Carolina Theatre, PlayMakers Repertory, Tulsa Opera and many others. TV: *Finding Magic Mike* for HBOMax. Charlie is the recipient of two Helen Hayes Awards for Outstanding Lighting Design. www.cmlighting.com

DANIEL LUNDBERG (*Sound Design*). Daniel has designed for Roundabout Theatre Company, The Public Theater, New York Stage and Film, The REV, A Contemporary Theatre of Connecticut, *His Story* (Dallas), and *Daniel Tiger's Neighborhood Live* (Tour). Sound engineer and assistant design credits include 15 Broadway productions, 11 tours, six circuses, two theme parks, and many concerts. BFA Carnegie Mellon. It's great to be here!

JONATHAN INFANTE (*Video Design*) is a multi-media designer and artist based out of Southern California. Owner of Infante Media, a boutique production company, that has developed video content for television, film, museums, concert tours, plays, and musicals around the world. He thanks his family and friends for their continued support. Most recent credits: *Disney's Tarzan the Musical* (Moonlight) *The Revolutionist*, *Legally Blonde* 2022/23 US National Tour, *An American in Paris / South Pacific* 2022 Tour, and *Dreamgirls* 2020 Asia Tour. Regional Credits: *Shrek* (3D-T), *Matilda* (Tuachan), *Prince Of Egypt* (Tuachan), *Beauty and the Beast* (MRE), *Newsies*

(Moonlight), *Big Fish* (Moonlight), *Mary Poppins* (MRE), *Damn Yankees* (Sacramento Music Circus) *American Idiot* (LMT).

KRISTIN STOWELL (*Music Supervisor*) is a music director, pianist, composer, arranger, copyist, and educator based in Washington, D.C. Recent credits include music directing the world premieres of *On Cedar Street* (Berkshire Theatre Group) and *Mystic Pizza* (Ogunquit Playhouse), and the regional premiere of *The Cher Show* (Ogunquit Playhouse). Her original award-winning musical *Endometriosis: The Musical* was featured in the 2022 Minnesota Fringe Festival. Kristin currently serves on the musical theatre faculty at American University.

ROXANNE DE LUNA (*Wig Design*). Debut design with Big League. North Carolina Theater: *Beautiful*, *The Carole King Musical*, *Kinky Boots*. Ogunquit Playhouse: *Tootsie*, *The New Broadway Musical*, *Da Vinci Code*, *Singing In The Rain*, *Beautiful*, *The Carole King Musical*, *Mr. Hollands Opus The New Musical* (World Premiere), *The Nutty Professor*, *The Cher Show*, *Young Frankenstein*, *Mystic Pizza* (World Premiere), *Escape to Margaritaville*, *Annie the Musical*, *Kinky Boots*, *Menopause*, *Cabaret*, *42nd Street*, *Elf the Musical*. Cleveland Playhouse: *Light It UP!*. Playmakers Repertory Company LORT-D: *My Fair Lady*, *Intimate Apparel*.

ALISON FRANCK, C.S.A. (*Casting Director*) has been a casting director in NYC for over 25 years. She started as an assistant for many Broadway Productions, then she worked in film/TV for several years, then from 2000–2010, she was the Resident Casting Director at Paper Mill Playhouse. In 2011 she joined the team at Liz Lewis Casting Partners, where she cast commercials, voiceovers, film/TV, and theatre. Alison now runs her own company, Franck Casting, where she has cast several tours of well-known musicals including *Legally Blonde*, *Dreamgirls*, *An American in Paris*, *A Christmas Story: The Musical*, *A Chorus Line*, *The Simon and Garfunkel Story Live* and *Little Women, the Musical*, now on tour. www.franckcasting.com

WHO'S WHO IN THE CAST

JANINE LOESCH (*Costume Coordinator*) is a New York based Costume Designer and Coordinator. Janine is happy to be involved in her first Big League Tour. Previously her designs have been seen at The Gateway on Long Island. Her favorites include *As You Like It*, *Evita*, *Summer: The Donna Summer Musical* and *Jersey Boys*. Janine was a Wardrobe Supervisor on the World Premiere Off-Broadway Production of *The Last Supper*, the Original Off-Broadway Production of *Americano*, and the Off-Broadway Production of *Fiddler on the Roof: In Yiddish* with English Supertitles. This is the second time Janine has been involved in a production of *The Cher Show*, and is happy to be working with an amazing team! Special thanks to Casey, Dan, and her family and friends for their love and support!

KAITLIN BUTTOFUCO (*Production Stage Manager*) is thrilled to be back on the road after being the ASM for the First National Tour of *The Cher Show*. Regional ASM credits: *Jersey Boys*, *The Bodyguard*, *My Way* (Theatre by the Sea). Select regional credits: *Kinky Boots*, *R&H Cinderella*, *Million Dollar Quartet*, *Rent*.

WENDY J. CONNOR/DONNA FIEGEL (*Tour Press & Marketing*). TRUE Marketing is a full-service entertainment marketing firm based in Orlando, Florida that boasts a full Marketing and Public Relations Consulting Team, Graphic Design Department, and Social Marketing Strategy Team. Team TRUE has worked on national tours of *A Christmas Story - The Musical*, *An American In Paris*, *Legally Blonde*, *A Chorus Line*, *My Fair Lady*, *Spring Awakening*, *The Producers*, *42nd Street*, *Dreamgirls*, *South Pacific*, *Guys and Dolls*, and *The Wizard of Oz*. www.TeamTRUE.com

BROADWAY LICENSING GLOBAL and its family of imprints (Broadway Licensing, Dramatists Play Service, Playscripts, and Stageworks) is the global leader in theatrical licensing and distribution. The iconic works represented epitomize the greatest collection of authors, composers, lyricists, and underlying rights holders across the globe including Arthur Miller, Tennessee Williams, Lynn

Nottage, Alan Menken, Stephen King, the Bee Gees, The Beatles, and Harry Potter Theatrical Productions. The Broadway Licensing Global collection of titles represents an astonishing 40 Tony Award® and 49 Pulitzer Prize-winning works. The company leverages its team's expertise in licensing, theatrical production, theatre education, and content creation to diversify, strengthen, and rapidly expand its portfolio into new sectors and markets. Founded in 2017, Broadway Licensing has quickly scaled and, as of 2022, the company represents 8 of the Top 10 most produced plays in professional theatres and 9 of the Top 10 most produced plays in High Schools.

BROADWAY & BEYOND THEATRICALS (*Tour Booking*). Led by founders and industry veterans Tracey McFarland, Victoria Lang, and Ryan Bogner, Broadway & Beyond Theatricals (BBT) is dedicated to the distribution and creation of quality branded theatrical content for traditional and non-traditional venues throughout North America and beyond. BBT's booking division delivers quality productions tailored to a venue's size and budget; the Content division offers commercial producers and IP stakeholders strategic management, consulting services and distribution solutions while producing quality theatrical content in New York and for the road. On Broadway as Producer: *The Cottage*, *The Kite Runner*. Broadway tours as agent: *The Cher Show*, *The Kite Runner*, *The Addams Family Musical*, *An American In Paris*, *Legally Blonde*, *Million Dollar Quartet Christmas* & and more. www.bbtheatricals.com

BIG LEAGUE PRODUCTIONS/DANIEL SHER (*Producer*) is celebrating its 34th season of producing and general managing Broadway tours of shows and attractions throughout the world. Early highlights were collaborations with Disney on Elton John and Tim Rice's *Aida* (US Tours, Taiwan, and China) and with Cameron Mackintosh on a new production of *Miss Saigon*. Also, the Tony® Award-winning Broadway revival of *42nd Street* and Susan Stroman's Broadway production of *Meredith Willson's The*

Music Man. Others: *Footloose* (Las Vegas, US Tour), *Titanic, 1776, Peter Pan, A Funny Thing Happened on the Way to the Forum* starring Rip Taylor, *Blast!*, *The Who's Tommy* (US Tour, South America, Europe, and Japan), *Ain't Misbehavin'* with Ruben Studdard, and the First National Tour of *Chitty Chitty Bang Bang*—flying car and all. More recent: *The Producers* (Susan Stroman's original work), *Hello, Dolly!* with Sally Struthers, *Guys and Dolls, My Fair Lady* (US Tour and China premiere), original hip-hop dance show *Groovaloo* (Off-Broadway), *Dr. Seuss' How the Grinch Stole Christmas! The Musical* (10 US Tours, Grand Ole Opry, and Madison Square Garden), *Dreamgirls* (US Tour, China premiere, Japan), *Hair* (US Tour and Japan), *Bring it On* (US Tour and Japan), *Legally Blonde*, and *Little Women*, as well as continued touring its flagship production of *A Christmas Story The Musical*. Current work includes *The Cher Show* national tour and a new touring production of *The Addams Family*. Future tours include *Meredith Willson's The Music Man*.

MUSIC CREDITS

"Ain't Nobody's Business If I Do" Written by Porter Grainger, Robert Graham Prince, Clarence Williams, James Witherspoon. Used with permission of Great Standards Music Publishing Co. (ASCAP) and Universal Music Corp. (ASCAP). "All I Ever Need Is You" Written by Jimmy Holiday and Eddie Reeves. Used with permission of EMI U Catalog Inc. (ASCAP). "Bang Bang" Written by Sonny Bono. Used with permission of Cotillion Music Inc (BMI). "Be My Baby" Written by Jeff Barry, Ellie Greenwich, Philip Spector. Used with permission of Universal Songs of Polygram (BMI), Mother Bertha Music (BMI), Trio Music Company (BMI), ABKCO Music Inc. (BMI). "Believe" Written by Paul Michael Barry, Brian Thomas Higgins, Steven Torch. Used with permission of WB Music Corp. (ASCAP), Hipgnosis Songs/Kobalt Music Publishing Ltd (PRS), PB Songs Ltd/Universal Polygram Int. Publishing Inc. (ASCAP), BMG Rights Management (UK) Limited (BMI). "Da Doo Ron Ron" Written by Jeffy Barry, Ellie Greenwich, Phillip Spector. Used with permission of Universal Songs of Polygram Int. (BMI), Mother Bertha Music Inc. (BMI), ABKCO Music Inc. (BMI). "Half Breed" Written by Al Capps, Mary Dean. Used with permission of Blue Monday Music (BMI). "I Got You Babe" Written by Sonny Bono. Used with permission of Cotillion Music Inc. (BMI). "It Don't Come Easy" Written by Richard Starkey. Used with permission of BMG Platinum Songs (BMI) obo Startling Music Ltd. "I Like It Like That" Written by Christopher Kenner EMI Longitude Music (BMI). Used by permission of Sony/ATV Music Publishing. "If I Could Turn Back Time" Written by Diane Warren. Used with permission of RealSongs (ASCAP). "Little Man" Written by Sonny Bono. Used

with permission of Cotillion Music Inc. (BMI). "Songs For The Lonely" Written by Paul Barry, Mark Taylor, Steve Torch. Used with permission of Metrophonic Music Ltd. (ASCAP)/Universal Music Publishing Ltd. (ASCAP), BMG Platinum Songs (BMI). "The Beat Goes On" Written by Sonny Bono. Used by permission of Warner Chappell. "The Shoop Shoop Song" Written by Rudy Clark. Used by permission of By The Bay Music (BMI)/Trio Music Company (BMI). "Vamp" Written by Walter Earl Brown. Used by permission of EBA Music (ASCAP). "You Better Sit Down Kids" Written by Sonny Bono. Used by permission of Cotillion Music Inc. (BMI). "You Haven't Seen The Last of Me" Written by Diane Warren. Used by permission of RealSongs (BMI). "A Different Kind of Love Song" Written by Johan Par Aberg, Michelle Robin Lewis, Sigurd Heimdall Roesnes. Used with permission of Wannabite Music (ASCAP)/Universal Music MGB Songs (ASCAP). "A Dream Is A Wish Your Heart Makes" Written by Mack David, Al Hoffman, Jerry Livingston. Used with permission of Walt Disney Music Company (ASCAP). "Baby Don't Go" Written by Sonny Bono. Used with permission of Mother Bertha Music (BMI), Ten-East Music (BMI), Warner Chappell Music Publishing. "Dark Lady" Written by Johnny Durrill. Used with permission of Universal Music - MGB Songs (ASCAP). "Gypsies, Tramps and Thieves" Written by Bob Stone. Used with permission of Universal Music Careers (BMI). "Heart of Stone" Written by Andrew Gerard Hill, Peter John Sinfield. Used with permission of BMG VM Music Ltd. (PRS). "I Found Someone" Written by Michael Bolton, Mark Mangold. Used with permission of But For Music Ltd./EMI April Music Inc. (ASCAP), Is Hot Music Ltd./EMI Blackwood Music Inc. (BMI). "Just Like Jesse James" Written by Desmond Child, Dianne Warren. Used with permission of Universal Polygram International Inc. (ASCAP), RealSongs (ASCAP). "Living In A House Divided" Written by Tom Bahler. Used by permission of Universal Music Careers (BMI). "Midnight Rider" Written by Greg Allman and Robert Payne. Used with permission of Unichappell Music Inc and Elijah Blue Music. "Rambling Man" Written by Richard Betts. Used with permission of Unichappell Music Inc. Forest Richard Betts Music (BMI). "Save Up All Your Tears" Written by Desmond Child, Dianne Warren. Used with permission of Universal Polygram International Inc. (ASCAP), RealSongs (ASCAP). "Strong Enough" Written by Paul Michael Barry, Market Phillip Taylor. Used with permission of PB Songs Ltd/Universal Music Publishing Ltd. (ASCAP). "Take Me Home" Written by Michele Aller, Bob Esty. Used with permission of Rick's Music Inc/ (BMI), Rightsong Music Inc. (BMI). "The Beat Goes On" Written by Sonny Bono. Used by permission of Cotillion Music Inc. (BMI). "The Way of Love" Written by Jacques Dieval, Al Stillman, Mariano Ruiz. Used by permission of Chappell-Co. Inc. (ASCAP), Music Sales Corp. (ASCAP). "This Is A Woman's World" Written by Matt Morris, Paul Oakenfold, Anthony "TC" Crawford and Joshua "J.D." Walker. Used with Permission of BMG Blue, Mass Transit Music, Music of Big Deal. "When The Money's Gone" Written by Bruce Roberts, Donna Weiss. Used by permission of Reservoir Media Management, Donna Weiss Music, Inc. (BMI).

STAFF FOR THE CHER SHOW
2024-2025 NATIONAL TOUR

PRODUCER AND GENERAL MANAGER
Big League Productions, Inc.

President..... Daniel Sher
General Manager.....Zach Krohn
Associate Producer and
Associate General Manager..... Sophie Whitfield
Management ConsultantBrent Watkins
Travel ConsultantGina Willens
Accounting.....Neuschatz, Neuschatz,
Herman & Hanke, LLP
Insurance Edgewood Partners Insurance Center
Banking..... JPMorgan Chase & Co.
Payroll Checks & Balances Payroll
Travel.....Road Concierge

TECHNICAL & CREATIVE STAFF

Company Manager Owen O'Brien
Production Stage Manager..... Kaitlin Buttofuco
Associate Director Saki Kawamura
Associate ChoreographerEmilie Reiner
Assistant ChoreographerMichelle Arotzky
Associate Lighting DesignerJason Flamós
Associate Sound Designer.....Anthony Lopez
Technical Consultant Paul Gould
Lighting Consultant Martin Cox
Production Sound Thomas Ford
Keyboard ProgrammerJim Harp
Assistant Stage Manager Lucas Gomes
Assistant Company Manager Henry Hernandez
Head CarpenterTim Scott
Assistant Carpenter/Flyman Jonathan Rogers
Head ElectricianRyan Anderson
Assistant Electrician/Board Op Dimitri Taylor
Assistant Electrician/Video Cody Neuman
Swing Technician/Asst. Electrician.... LaVar Taylor
Head Sound.....Rachel Hall
Anthony Lopez
Assistant Sound Manny Rodriguez
Allison Lourens
Head Props Kelly Butler
Head Wardrobe..... John Beltre
Star Dresser/Wardrobe Donna MacNaughton
Head Hair/Makeup Lisha Michel
Marketing InternOwen Parker

TOUR BOOKING

Broadway & Beyond Theatricals

Tracey McFarland Ryan Bogner Victoria Lang
Jaymi Gilmour Megan Savage Kelsey Young
Monica Smith Gauri Mangala Mary Alex Daniels

TOUR PRESS & MARKETING

TRUE Marketing

Wendy J. Connor Donna Fiegel

BROADCAST ADVERTISING & MEDIA PRODUCTION

Fresh Produce Productions

Frank Basile

CREDITS

SCENERY PROVIDED BY DALLAS STAGE SCENERY,
IWEISS, MCGUIRE SCENIC, AND ROSE BRAND
LIGHTING PROVIDED BY INTELLIGENT LIGHTING SERVICES LTD
SOUND PROVIDED BY BIG LEAGUE PRODUCTIONS
TRUCKING PROVIDED BY JANCO AND YOKE TRANSPORT
BUSING PROVIDED BY PEAK TOURING AND LAMOILLE VALLEY
HOTELS ARRANGED BY ROAD CONCIERGE

THE CHER SHOW REHEARSED AT RIPLEY-GRIER STUDIOS
305 WEST 38TH STREET, NEW YORK NY

www.thechershowtour.com
@chershowtour



Backstage and Front of the House Employees are represented by the International Alliance of Theatrical Stage Employees (or I.A.T.S.E.).



The Director and Choreographer are members of the **STAGE DIRECTORS AND CHOREOGRAPHERS SOCIETY**, a national theatrical labor union.



United Scenic Artists • Local USA 829
of the I.A.T.S.E. represents
the Designers & Scenic Artists
for the American Theatre

THE USE OF ANY RECORDING DEVICE, EITHER
AUDIO OR VIDEO, AND THE TAKING OF PHOTOGRAPHS,
EITHER WITH OR WITHOUT FLASH, IS
STRICTLY PROHIBITED.

PALACE THEATER STAFF DIRECTORY

BOARD OF DIRECTORS

Martin Morgado, <i>Chair</i>		Shae Apland, <i>Marketing Committee Chair</i>	
Michael O'Connor, <i>Treasurer/Vice Chair</i>		Mary Rosengrant Chiappalone, <i>Development Committee Chair</i>	
Jack Senich, <i>Vice Chair</i>		Dr. Peter Jacoby, <i>Past Chair</i>	
Dora Bennett, <i>Secretary</i>			
Vanessa Aguilar	Carolyn Highsmith	Sandra	Christopher Rempfer
Kathleen Brochhausen	J.C. Hopkins	Martinez-McCarthy	Felix Rodriguez
Mary Grace Cavallo	Dr. Scott Kurtzman	Lynnette Letsky	Timothy Rourke
Beth Devino	Dave Martin	Piombo	Matthew Tryforos
Joseph D'Orso		Giuseppe "Joe" Pisani	

BOARD OF ADVISORS

Carolyn F. Cicchetti	Timothy C. Moynahan	James C. Smith	Sandra Vigliotti-Senich
----------------------	---------------------	----------------	-------------------------

CHIEF EXECUTIVE OFFICER

Frank Tavera

ADMINISTRATIVE STAFF

Ana Dec, *Programs & Ticketing Officer*
Dave Flowers, *Chief Production Officer*
Debbie Forchielli, *Volunteer Coordinator*
Denise Hinkelman, *Box Office Coordinator & Development Services*
Brian Kimmey, *Design & Digital Manager*
Natalie Lawlor, *Development Officer*
Tina Lubus, *Finance Manager*
Meg Luddy, *Tour Coordinator*
Sheree Marcucci, *Director of Special Projects & Curated Programs*
Emanuel Neri, *Building Porter*
Andrea Nyquist, *Marketing, Sales & Public Relations Officer*
Stephanie Panico, *Special Events Manager*
Deirdre Patterson, *Box Office Manager*
Lindsey Rosa, *Development Associate*
Sandra Rosa, *Finance Officer*
Matt Sivilla, *Building Mechanic*
Lisa Suzio, *Director of Hospitality*
Ashley Sweet, *Operational Events Manager*
Peggy Terhune, *Communications Manager*
Sydney Wyatt, *Digital Marketing Coordinator*

TECHNICAL STAFF

Dave Barata, <i>Head Sound Engineer</i>	Karin Lopez, <i>Wardrobe Mistress</i>
Andrew Bynum, <i>Head Electrician</i>	Catherine Moore, <i>Properties Manager</i>
Gardner Friscia, <i>Head Carpenter</i>	Ken Owens, <i>Head Flyman</i>

HOUSE MANAGERS

Donna Cameron	Crystal LaBonte	Joe Frascatore
---------------	-----------------	----------------

2024-2025 CORPORATE PARTNERS

CORPORATE SPONSORS



CORPORATE MEMBERS

Aeroswiss LLC
Albert Brothers
American Heating Service
Bunker Hill Pharmacy
Carpin Manufacturing
Coil Pro Machinery, Inc.
The Corbo Group
Demsey Manufacturing Company
Diversified Building Services

Gaffney, Bennett & Associates, Inc.
Hubbard-Hall Inc.
Jaci Carroll Staffing
L.F. Powers Co., Inc.
Marion Manufacturing
Metallon, Inc.
Montagno Insurance Inc.
Moore, O'Brien & Foti
Nanavaty Davenport
Studley White LLP

Atty. Thomas & Janine Pettinicchi
Republican-American
Savings Bank of Danbury
Secor, Cassidy & McPartland, PC
Suzio-York Hill
Tomasso Group
TORRCO
Tracy Driscoll Insurance &
Financial Services

INSTITUTIONAL SUPPORTERS

Adam Broderick Salon & Spa
American Savings Foundation
Arts & Culture Collaborative —
Waterbury Region
Bank of America
Barter Business Unlimited
Cavallo's Imported Italian Foods
Central CT
Chambers of Commerce
City of Waterbury,
Arts & Tourism Commission
CompuMail
Connecticut Community
Foundation
Connecticut Public Radio
Corporate Display Specialties
David, Helen & Marian
Woodward Fund
DNR Laboratories
Emily's Catering Group
Eversource Energy Foundation

Fascia's Chocolates
Felix Manuel Photography
Frank Pepe Pizzeria Napoletana
Frankie's of Reidville Drive
George A. & Grace L. Long
Foundation
Gracewell Productions
Graham's Florist LLC
Greater Waterbury YMCA
Harry's Party Rental
LaBonne's Markets
Michael's Greenhouses
Naugatuck Valley
Ear, Nose & Throat
New England
Arts & Entertainment
The Next Street
Selim & Linda Noujaim
Onyx II Fine Jewelers
Pepsi Cola of Bristol

Perry's Cleaners
Prospect Printing Company
Republican-American
Mary Ellen & Tim Rourke
Susan Suhr & Marina Viale
Sweet Maria's
Thomaston Savings Bank
Thomaston Savings Bank
Foundation
Tower Design & Print LLC
United Way of Greater Waterbury
Verbena Caterers
The Village at East Farms
Waterbury Regional Chamber
Waterbury Symphony Orchestra
Watertown Foundation
WATR Radio 1320 AM
WORX
WSHU Public Radio
WTNH News Channel 8

The Prospect Printing Company

16 Waterbury Rd.
Prospect, CT 06712

Tel: 203.758.6007
Fax: 203.758.3349

www.prospectprinting.net
info@prospectprinting.net

**High Quality Offset
and Digital Printing**

Brochures • Letterheads
Business Cards • Envelopes
Banners • Signs • Posters
Promotional Products
Variable Data & More!



Pepsi Cola
of Bristol

Proudly Supports the
Palace Theater



The Brands You Love.
Locally Owned & Operated

110 Corporate Drive, Southington, CT 06489
www.pepsicolabristol.com
(860) 628-8200

We're serious about math **BEING FUN!**



Kids who learn to love math gain confidence for a successful year. Mathnasium students learn from highly trained instructors in a fun and engaging environment. As their skills increase, they grow in confidence not just in math, but in all their subjects.

Mathnasium of Naugatuck Valley
203-757-1234
Ages 6 - adults
www.mathnasium.com/naugatuckvalley

Contact Us for a Free Assessment
www.mathnasium.com

MATHNASIUM
The Math Learning Center



TOMASSO GROUP

Proud to support
the **PALACE THEATER**, and
proud to have been part of its renovation!

BEFORE



AFTER

One Liberty Square, New Britain, Connecticut 06051

Ph: (860) 224-9977

TomassoGroup.com



Behind-the-Scenes Look

Take a Tour of the Palace Theater!

UPCOMING PUBLIC TOURS

Wednesday	March 12	7:00 pm
Wednesday	April 16	7:00 pm
Monday	May 19	7:00 pm
Sunday	June 8	2:00 pm

Private Tours for Groups are Available

Meg Luddy | Tour Coordinator
luddy@palacetheaterct.org

FPR
FULL POWER RADIO

Shangri-La

CONNECTICUT'S NEWEST CANNABIS RETAILER

VISIT US!

NORWALK
430 MAIN AVE

75 CONNECTICUT AVE

PLAINVILLE
359 NEW BRITAIN AVE

WATERBURY
53 INTERSTATE LN

DO NOT USE CANNABIS IF YOU ARE UNDER TWENTY-ONE YEARS OF AGE. KEEP CANNABIS OUT OF THE REACH OF CHILDREN.

CENTURION
WEALTH MANAGEMENT

Powered by Ameriprise Financial

JOSH BRODER

Forbes Best-In-State Wealth Advisors, 2024

START PLANNING FOR YOUR TOMORROW TODAY.

203.823.9114 x319

joshua.m.broder@ampf.com

1781 Highland Ave. Suite 207
Cheshire, CT 06410

At Centurion Wealth Management, we strive to inspire confidence, simplify life, and reduce stress. As your trusted advisor, we provide personalized advice to help you achieve your goals and dreams.

LEARN MORE: WWW.CENTURIONWEALTHMNGT.COM

HERE, WE'RE HUSKIES

 High-Quality Education

 Affordable

 Close to Home

UConn Waterbury and the Osher Lifelong Learning Institute celebrate more than two decades at the heart of downtown.

#9 4-Year, Public University for Return on Investment

(Georgetown University, 2022)

UConn
WATERBURY



VOTED BEST INSURANCE AGENT CONNECTICUT

VOTED BEST INSURANCE AGENCY Republican American

Celebrating 60 years of serving clients with care and dedication!

As proud sponsors of the Palace Theater, we're dedicated not only to our clients but also to the community we serve. Experience the difference of working with a company that values your peace of mind.



Kim Fitzgerald
2024 Fortune Five Star Legend



Mark Montagno

Montagno Insurance Inc.
344 Robbins St. Waterbury, CT 06708

 InsuranceQuotesCT.com

203.574.5211

 @Montagnoinsurance

SERVICING ALL OF CONNECTICUT

B Bourassa
catering & events

You're just one call away from turning dreams into reality!

As a full service caterer, we are ready to help you customize your special event to fit your style & taste.

We offer imaginative & seasonally inspired menus, gracious service & a comprehensive range of event planning options.



Info@bourassacatering.com
203.269.9266
www.bourassacatering.com

OPEN. ACCURATE. FAST.



**Welcome to New England's
first high-field OPEN Velocity MRI System.
It provides the latest technology and
highest imaging quality in less time with
the comfort of a wide open design.**



WaterburyHEALTH

Your Imaging Team at Valley Imaging Partners, LLC

690 Main Street South, Suite 7LL | Southbury, CT | 203.755.OPEN (6736)

We learned a lot in 70 years



Waterbury Palace Theater Marquee. Completed October, 2006

Like how to build powerful images.
We can build yours too.



ABC SIGN
CORPORATION



POWER Your Next Event

WITH THE EVENT **EXPERTS**

- ⚡ Audio & Video Production
- ⚡ Lighting & Staging
- ⚡ DJs & Entertainers
- ⚡ Bands & Musicians
- ⚡ Decor & Florals
- ⚡ Photography
- Corporate Events ⚡
- Non-Profit Events ⚡
- Galas & Fund-Raisers ⚡
- Parties & Celebrations ⚡
- Weddings & Family Events ⚡
- Graduations & More ⚡

*Proud to be the Official Event Services Partner
of the Palace Theater!*



Official Event Production Partner to:



...and serving as A/V Production Partner for the
Travelers Championship since 2010!



Cheshire, CT

www.PowerstationEvents.com

203-250-8500

American Standard



TORRICO | BATH & KITCHEN SHOWROOM

OFFERING DECORATIVE PLUMBING & LIGHTING,
VANITIES, CABINET & DOOR HARDWARE.

VISIT OUR BEAUTIFUL WATERBURY SHOWROOM
100 NORTH ELM STREET

Since 1917 • www.TorrcoDesignCenter.com • 203.756.3641

STAMFORD • FAIRFIELD • DANBURY • NEW HAVEN • EAST WINDSOR • WATERBURY



96%*



**Personal Banker Relationship
Satisfaction Rate**

*Rivel Research Group

Because we build lifetime relationships.

Your Ion Banker partners with you to understand your business objectives and service your needs with tailored solutions.

See why 96% of Ion Bank business customers are satisfied. Experience the difference with us.

Visit a branch or call a
Business Banker today!

ion BANK™

[IonBank.com](https://ionbank.com) • 203.729.4442

Member FDIC