


SHOW NOTES

PALACE THEATER PROGRAM BOOK



DEAR EVAN HANSEN

April 2025



Celebrating your tireless
**COMMITMENT
TO OTHERS.**

Every day, you help make our community a better place to live. We do our best to support you, your organization and the people you serve. We're always proud to help our neighbors.

WebsterBank®

[websterbank.com](https://www.websterbank.com)



Post
UNIVERSITY®
EST. 1890



**Extraordinary
Educational Experience**

Ranked Among The Best
By US News & World Report

Post Makes It Personal
Post.edu



MERIDEN
NEW HAVEN • WALLINGFORD
MILFORD • DERBY

WWW.SUZIOYORKHILL.COM
888-SUZIICO • 888-789-4626

TRACY | DRISCOLL
 Protecting how you work, live and play

Tracy Driscoll offers professional guidance and a variety of products to help you meet your individual and business needs. Following is a list of products we have available:

Commercial Insurance	Personal Insurance	Life and Employee Benefits	Wealth Management
~ Property	~ Auto	~ Individual Health	~ Traditional IRA
~ Liability	~ Home / Condo / Renters	~ Group Health	~ Roth IRA
~ Workers Compensation	~ Umbrella	~ Medicare Advantage	~ Simple IRA
~ Auto	~ Watercraft/Yachts	~ Medicare Supplement	~ Annuities
~ EPLI	~ Motorhomes	~ Dental	~ 401k Plan
~ Contractor Bonds	~ Antique Auto	~ Life Insurance	~ Term Life
~ Construction Equipment	~ Motorcycle	~ Short and Long Term Disability	~ Whole Life
~ Errors and Omissions	~ Waterfront Property	~ Voluntary Benefits	~ Universal Life
~ Directors and Officers	~ High Valued Properties	~ HSA / FSA / HRA	~ Long Term Care
~ Cyber	~ Worksite Programs	~ COBRA Services	~ \$29 College Planning

Contact: **Tracy, Driscoll & Co., Inc.**
 O: 860.589.3434
 10 Main Street, 4th Floor, Bristol, CT. 06010
www.tracy-driscoll.com

Securities offered through Registered Representatives of Cambridge Investment Research, Inc., a broker-dealer, member of FINRA / SIPC. Advisory services through Ohanesian / Lecours, a registered Investment Advisor. Cambridge and Ohanesian / Lecours are not affiliated.

B&Z MANAGEMENT PROUDLY SUPPORTS THE PALACE THEATER

LOCALLY OWNED AND OPERATED
 DUNKIN' LOCATIONS IN THE
 GREATER WATERBURY AREA

DUNKIN'



Expert cancer care
RIGHT HERE

THE HAROLD LEEVER REGIONAL CANCER CENTER
 (203) 575-5555 • leevecancercenter.org



A Partnership Worth Celebrating.

Products and services
that help you succeed.

- Personal Banking & Loans
- Business Banking & Loans
- Mortgages & Equity Loans
- Community Support

IvesBank.com

844.723.2265

NMLS #763547

Member FDIC

The logo features a stylized blue icon of a building with three vertical columns on the left, followed by the words "IVES BANK" in a large, blue, serif font.

OPEN. ACCURATE. FAST.



**Welcome to New England's
first high-field OPEN Velocity MRI System.
It provides the latest technology and
highest imaging quality in less time with
the comfort of a wide open design.**



WaterburyHEALTH

Your Imaging Team at Valley Imaging Partners, LLC

690 Main Street South, Suite 7LL | Southbury, CT | 203.755.OPEN (6736)



DON'T MISS A BEAT!

WITH SENNHEISER MOBILECONNECT

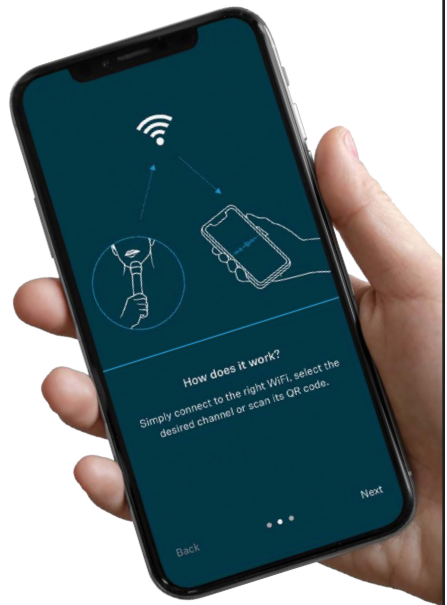
Have you ever struggled to hear a show at the theater?
**LISTEN YOUR WAY — WITH LIVE AUDIO STREAMING
DIRECTLY TO YOUR PHONE!**

Download *Sennheiser MobileConnect* to enhance your theater experience.

NOTE: See us at Coat Check before the show begins to complete set-up.

The *Sennheiser MobileConnect* application on your smartphone connects audio right to your Bluetooth-enabled hearing aids, cochlear implants or headphones.

This service is available for every performance.



**Mental health support.
Substance use recovery.**



McCall Behavioral
Health
NETWORK

860.496.2100 | mccallbhn.org



Serving Connecticut for more than 50 years. Se habla español.

CONGRATULATIONS

To the Palace Theater on
20 Years of Entertainment!



**Thomaston
Savings Bank**

ThomastonSB.com | 860.283.1874 | Member FDIC

Special Thank You

TO OUR 20TH YEAR PROGRAM+ ADVERTISERS



WebsterBank
Broadway Series

ionBANK

IVES BANK

Post
UNIVERSITY®
EST. 1890



**CENTURION WEALTH
MANAGEMENT**

MONTAGNO INSURANCE INC.

**CLOCKTOWN BREWING
COMPANY**

PEPSI COLA OF BRISTOL

**DIAGNOSTIC RADIOLOGY
ASSOCIATES**

POST UNIVERSITY

**DUNKIN' —
B&Z MANAGEMENT**

**TRINITY HEALTH
OF NEW ENGLAND —
ST. MARY'S HOSPITAL**

**HAROLD LEEVER REGIONAL
CANCER CENTER**

TOMASSO GROUP

HUBBARD-HALL

TORRCO

MATHNASIUM

ENJOY DINNER & A SHOW!

CLOCKTOWN BREWING COMPANY

TIME BEST SPENT

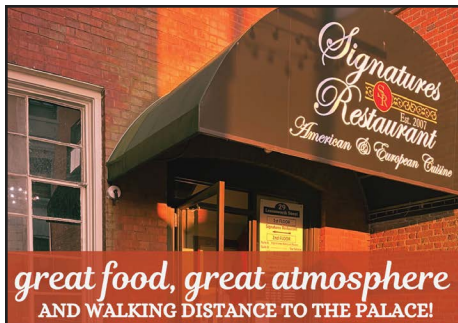
From crafting the finest clocks
to crafting the finest beer

lively taproom | family friendly | live music
variety of craft beers and specialty cocktails
wood-fired pizzas and classic pub fare

135 South Main St, Thomaston
clocktownbrewingco.com
(860) 880-8240

Hours:

Wednesday 4-9 pm
Thursday 4-10 pm
Friday-Saturday Noon-10 pm
Sunday 11am-8pm (Brunch 11 am-3 pm)



Signatures Restaurant

203-575-1190
29 Leavenworth St.
Waterbury, CT 06702



Poli Club PRE-SHOW DINING

The Poli Club is the theater's elegant, catered dining room open for dinner before select Broadway performances. The Poli Club offers a creative & delicious prix fixe menu from Verbena Caterers.

Featuring a first class wine list and top shelf liquors, the Poli Club bar is open to members for pre-show cocktails and VIP intermission beverage services.

TO LEARN MORE ABOUT MEMBERSHIP:
CALL NATALIE LAWLOR 203.346.2009
EMAIL LAWLOR@PALACETHEATERCT.ORG



*You're just one call away from
turning dreams into reality!*

As a full service caterer, we are ready to help you customize your special event to fit your style & taste.

We offer imaginative & seasonally inspired menus, gracious service & a comprehensive range of event planning options.



Info@bourassacatering.com
203.269.9266
www.bourassacatering.com

LETTER FROM THE CHAIR

As the Chair of the Board of Directors of the Palace Theater, I have the great pleasure and honor of welcoming you to this beautiful, treasured theater. This season is a milestone one, as we are celebrating our 20th Anniversary year!

Just over two decades ago, a group of dedicated citizens, together with local and state leaders, organized to restore and bring life back to this historic facility, which had been shuttered for around fifteen years. On November 12, 2004, after completing an extensive renovation, the Palace Theater reopened its doors to the public, showcasing its new state-of-the-art stage and perfectly restored lobby spaces.



In the past twenty years, we have welcomed well over two million people to our performances, presentations, and events, introduced thousands of young students to the excitement of live theater, and served as the premier arts and cultural destination for the Greater Waterbury community and its surrounding towns.

In addition to our capacity as a performance venue, we are a cultural center, a reception facility for special events, an education space, and we also serve as the performance home for the Waterbury Arts Magnet School.

We have achieved a great deal in twenty years, and there remains much opportunity for growth in the decades ahead. We look forward to accomplishing this work alongside you, our patrons and community partners. On behalf of the Board of Directors and the staff, we thank you for joining us and supporting the arts, whether you are a 20-year supporter or a first-time visitor.

Welcome to the Palace!

Sincerely,

A handwritten signature in black ink, appearing to read "Martin Morgado". The signature is fluid and cursive, with a large, sweeping flourish at the end.

Martin Morgado
Chair of the Board of Directors

PUT YOUR BRAND IN THE SPOTLIGHT!

ADVERTISE WITH US!

INTERESTED IN A PROGRAM AD?

Contact Natalie Lawlor
203.346.2009 • lawlor@palacetheaterct.org



EBM

IT Solutions Provider



Cybersecurity & Managed IT Services

Our approach is simple: we provide the best advice and innovative technology with exceptional customer service.

ebmusa.com | Call us at 203-254-8500



**Gaffney, Bennett
and Associates, Inc.**
Government Relations and Political Consulting

One Liberty Square
New Britain, CT 06051
860-229-0301



TRIPLE STITCH™
BRAND PROMOTIONS

800-633-3536

sales@triplestitch.com

TripleStitch.com

Prospect, CT 06712

**Custom Apparel &
Promotional Products**

LETTER FROM THE CEO

Welcome to the Palace Theater!

All season long, we have been celebrating our 20th Anniversary since our restoration and reopening, and we are delighted to have you join us this weekend for *Dear Evan Hansen*. While this is the final presentation of our 2024–2025 Webster Bank Broadway Series, we will also be announcing our 2025–2026 roster of shows soon — so please stay tuned!



This season's shows have focused on the importance — and challenges — of creating connections within families and communities, or between individuals. *Dear Evan Hansen* is no exception, as the characters in the show find unexpected personal connections and relationships with one another as they navigate their own complex and social media-filled lives.

Speaking of social media, I am reminded that in this era where so much entertainment can be accessed via a personal screen, the opportunity to enjoy a live performance in the company of others can be transformative. I speak for all of us at the Palace when I say thank you — we would not be here today were it not for the support that each of you has given us in the past 20 years, helping keep the performing arts flourishing in the Greater Waterbury area.

To honor our 20-year milestone, we are presenting an exciting one-night event on May 17, *Broadway Scores*! Featuring selected musical hits from some of the shows that have graced our stage since 2004, performed by the Waterbury Symphony Orchestra and a roster of incredible Broadway performers, *Broadway Scores* promises to be an evening of entertainment, celebration, and memorable music. I hope you'll consider joining us on May 17, as we come together to commemorate the past 20 years.

Thank you for supporting the arts!

Sincerely,

A handwritten signature in black ink that reads "Frank Tavera". The signature is written in a cursive style and is positioned above the printed name and title.

Frank Tavera
CEO

**DEAR
EVAN
HANSEN**
THE TONY AWARD-WINNING BEST MUSICAL

APRIL 25-27, 2025



WebsterBank®



Post Makes It Personal

Crossroads Live
presents

DEAR EVAN HANSEN

Book by
STEVEN LEVENSON

Music & Lyrics by
BENJ PASEK & JUSTIN PAUL

MICHAEL FABISCH HATTY RYAN KING BRE CADE CAITLIN SAMS
ALEX PHARO JEFF BROOKS GABRIEL VERNON NUNAG MAKENA JACKSON
MICHAEL PEREZ MONICA BLUME JULIANNA BRAGA
BLAKE EHRLICHMAN DALE OBERMARK

Scenic Design
DAVID KORINS

Projection Design
PETER NIGRINI

Costume Design
EMILY REBHOLZ

Lighting Design
JAPHY WEIDEMAN

Sound Design
NEVIN STEINBERG

Casting
MURNANE CASTING
CHAD ERIC MURNANE, CSA
AMBER SNEAD, CSA

Music Coordinator
TALITHA FEHR

Vocal Arrangements &
Additional Arrangements
JUSTIN PAUL

Music Director
MICHAEL HOPEWELL

Production Stage Manager
ANNA KLEVIT

Company Manager
AARON MARTIN

Tour Management
CROSSROADS LIVE
NORTH AMERICA

Production Manager
GREGG DAMANTI

General Manager
ANDREW TERLIZZI

Executive Producer
JAYNA NEAGLE

Exclusive Tour Direction
THE BOOKING GROUP
MEREDITH BLAIR

Tour Marketing & Publicity
BOND THEATRICAL

Social Media
THINK TANK
MARKETING

Direction Recreated by
DANNY SHARRON
MARK MYARS

Associate Music Supervisor
BEN COHN

Choreography Recreated by
MARK MYARS

Music Supervision, Orchestrations & Additional Arrangements
ALEX LACAMOIRE

Original Broadway Production Choreography by
DANNY MEFFORD

Original Broadway Production Directed by
MICHAEL GREIF

Originally Produced on Broadway By Stacey Mindich
Originally presented by Arena Stage - July 9, 2015 to August 23, 2015
New York premiere at Second Stage - March 26, 2016 to May 29, 2016

"Dear Evan Hansen" is presented through special arrangement with MUSIC THEATRE INTERNATIONAL, New York, NY. www.mtishows.com

CAST



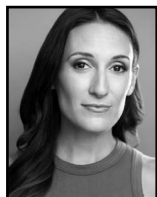
Michael
Fabisch



Hatty Ryan
King



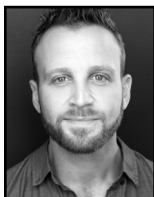
Bre
Cade



Caitlin
Sams



Alex
Pharo



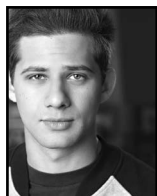
Jeff
Brooks



Gabriel Vernon
Nunag



Makena
Jackson



Michael
Perez



Monica
Blume



Julianna
Braga



Blake
Ehrlichman



Dale
Obermark

CAST

(listed in alphabetical order)

Heidi Hansen	BRE CADE
Larry Murphy.....	JEFF BROOKS
Evan Hansen	MICHAEL FABISCH
	<i>(select performances)</i> MICHAEL PEREZ
Alana Beck.....	MAKENA JACKSON
Zoe Murphy	HATTY RYAN KING
Jared Kleinman	GABRIEL VERNON NUNAG
Connor Murphy.....	ALEX PHARO
Cynthia Murphy	CAITLIN SAMS

VIRTUAL COMMUNITY VOICES

JACOB ANDERSON, NAREE ASHERIAN, KARALYN CLARK, VITA DREW,
ADAM DUNSON, AYLER EVAN, WILL HALEY, TODD HART, ROBERT HYATT,
PAUL JOHNSON, BRANDON NIX, DANICA RUIZ, JOLANA SAMPSON-WILLIAMSON, CHRIS-
TINE SHEBECK, CONNOR SIMPSON, KATE STEELE, NICOLE UNGER

UNDERSTUDIES

*Standbys and understudies never substitute for players
unless a specific announcement for the appearance is made at the time of the performance.*

Evan Hansen, Connor Murphy, and Jared Kleinman — BLAKE EHRLICHMAN
Evan Hansen, Connor Murphy — MICHAEL PEREZ
Heidi Hansen, Cynthia Murphy, Alana Beck — MONICA BLUME
Alana Beck, Zoe Murphy — JULIANNA BRAGA
Larry Murphy — DALE OBERMARK

DANCE CAPTAIN

MONICA BLUME

DEAR EVAN HANSEN

WILL BE PERFORMED WITH ONE 15-MINUTE INTERMISSION

MUSICAL NUMBERS

ACT ONE

“Anybody Have a Map?”	Heidi, Cynthia
“Waving Through a Window”	Evan, Company
“For Forever”	Evan
“Sincerely, Me”	Connor, Evan, Jared
“Requiem”	Zoe, Larry, Cynthia
“If I Could Tell Her”	Evan, Zoe
“Disappear”	Connor, Evan, Alana, Jared, Cynthia, Larry, Zoe
“You Will Be Found”	Evan, Company

ACT TWO

“Sincerely, Me” (Reprise).....	Connor, Jared
“To Break in a Glove”	Larry, Evan
“Only Us”	Zoe, Evan
“Good for You”	Heidi, Alana, Jared, Evan
“You Will Be Found” (Reprise)	Company
“Words Fail”	Evan
“So Big/So Small”	Heidi
“Finale”	Company

MUSICIANS

Music Director, Keys — MICHAEL HOPEWELL
Associate Music Director, Keys Cover — ALEX GUTIERREZ
Violin/Concertmaster — AMANDA NIX
Viola — BRANDON KREUDER
Cello — DAVID WARNER
Guitar 1 — PERRY COWDERY
Guitar 2 — JEFFERY DUNN
Bass — JACKSON HOPPER
Drums — OLIVIA KELLY

Keyboard Programmer — RANDY COHEN, RANDY COHEN KEYBOARDS
Ableton Programmers — ENRICO DE TRIZIO, SCOTT WASSERMAN



The photographing or sound recording of any performance inside this theater, without the written permission of the management, is prohibited by law. Violators may be punished by ejection and violations may render the offender liable for money damages.

WHO'S WHO IN THE CAST

MICHAEL FABISCH (*Evan Hansen*). A Minnesota born actor/singer, Michael recently earned his BFA from the University of Michigan. Michael would like to extend his heartfelt gratitude to his brilliant mentors, his loving family and his caring friends for their immense support.

HATTY RYAN KING (*Zoe Murphy*). National Tour debut! Previous credits include Anna in *Frozen: A Musical Spectacular* (Disney Cruise Line), Belle in *Beauty and the Beast* (Studio Tenn), Cathy in *The Last 5 Years* (Everblue Arts). Huge thanks to Murnane Casting, The Price Group, and Mom. @hattyryanking.

BRE CADE (*Heidi Hansen*) is happy to be here! Past favorite credits include: *Rabbit Hole* (Becca), *Next to Normal* (Diana), *Into the Woods* (Baker's Wife), *Evita* (Eva Peron), *Cabaret* (Sally Bowles), and *Hedwig & the Angry Inch* (Yitzhak). Love to Zac. @brefreakincade

CAITLIN SAMS (*Cynthia Murphy*). National Tours: *Charlie and the Chocolate Factory*, *Elf*, *Flashdance*. Regional: *Beautiful*, *CATS*, *Legally Blonde*, *Escape to Margaritaville*, *Brigadoon*, *Kinky Boots*, and many more. BFA from WMU. Big thanks to my family. Big love to Dale. @unsophitcaitlin www.caitlinsams.com

ALEX PHARO (*Connor Murphy*) is thrilled to make his national tour debut! Proud Auburn University deferred student. Credits: *The Wedding Singer* (Robbie), *Natasha, Pierre, and the Great Comet of 1812* (Anatole). Shout out to Mom, Dad, Big Cheese, Larrie, DC, and Zola! @alexpharo

JEFF BROOKS (*Larry Murphy*). He/him. National Tours: *Chicago*, *A Bronx Tale*, *Bullets Over Broadway*, Disney's *Beauty & the Beast*, *Fiddler on the Roof*, *The Sound of Music*, *Oklahoma!*. Netflix's "The Watcher." Thanks to Todd, Bob and everyone at ATB, my loving family, friends, and Stef. @bathrobedbrooks

GABRIEL VERNON NUNAG (*Jared Kleinman*). Professional debut! Proud AMDA LA alumni: BFA. Much love to my family, friends, teachers, and Take 3 Talent! Regional: *Spring Awakening* (Moritz), *In The Heights* (Benny). "I will carve my own path for myself." @gabrielnunag

MAKENA JACKSON (*Alana Beck*) is a New York City based performer, making her National Tour debut in *Dear Evan Hansen!* TV: "Up Here" (Hulu). Makena would like to thank her endless support system for always believing in her. @makenajacksonn

MICHAEL PEREZ (*Alternate Evan Hansen; u/s Connor Murphy*) is honored to join *DEH!* Film/TV: Amazon Prime's *Uncle Frank*, Hallmark's *To Her With Love*, Netflix's "Insatiable," AMC's "Halt and Catch Fire," Sundance "When the Streetlights Go On." Thanks to his family, Stewart Talent, Rikki Dale Management, and Appa. @mikey_prez

MONICA BLUME (*u/s Heidi Hansen, Cynthia Murphy, Alana Beck; Dance Captain*). Some favorite credits include: *Cirque Musica Holiday Wonderland* (National Tour), *Beautiful* (Weathervane Theatre), *Kinky Boots* (Fulton Theatre/Maine State Music Theatre), "Blue Bloods" (CBS). Many thanks to Nicole at MMV. All my love to Justin. For my cousin, Matthew. #youwillbefound

JULIANNA BRAGA (*u/s Alana Beck, Zoe Murphy*) is thrilled to be joining *Dear Evan Hansen* for her National Tour debut! Montclair State BFA Musical Theatre '24 graduate. Recent credits include *Seussical* (Gertrude McFuzz) and *Into the Woods* (Rapunzel). Thanks to my loved ones & teachers for everything. @juliannabragad

BLAKE EHRLICHMAN (*u/s Evan Hansen, Connor Murphy, Jared Kleinman*) is ecstatic to be making his national tour debut! A graduate of Marymount Manhattan College. Huge thanks to the entire *DEH* team! Love to Mom, Dad, Brandon, family and friends — for always believing. @blakejehrllichman

WHO'S WHO IN THE CAST

DALE OBERMARK (*u/s Larry Murphy*) is excited to make his national tour debut! You can find out more about him by visiting his website, www.daleobermark.com, or by looking him up on Instagram @daleobie73. He sends big love to Caitlin!

STEVEN LEVENSON (*Book*). Steven is a Tony Award-winning playwright, screenwriter, and television writer and producer. His plays include *If I Forget*, *Core Values*, *Seven Minutes In Heaven*, and *The Language of Trees*. He wrote the book for the musical, *Dear Evan Hansen*, which won six Tony Awards, including Best Book and Best Musical, as well as the Olivier Award for Best New Musical.

BENJ PASEK & JUSTIN PAUL (*Music & Lyrics*). Oscar, Grammy, and Tony Award-winning songwriters/producers Benj Pasek & Justin Paul are best known for their work on *La La Land*, *The Greatest Showman* and *Dear Evan Hansen*. Other recent credits include "Only Murders in the Building," *Spirited*; *Lyle*, *Lyle Crocodile*; *Aladdin*; *Trolls*; "Harlem;" "Dear Edward;" "Smash;" "The Flash;" and *Pink: All I Know So Far*. Previous theatre credits include *Dogfight*, *A Christmas Story*, *James and the Giant Peach*, and *Edges*.

MICHAEL GREIF (*Original Director*). Five-time Tony nominated director with three new musicals this season on Broadway: *Days of Wine and Roses*, *The Notebook* and *Hell's Kitchen*. Broadway: *Rent*, *Next to Normal*, *Grey Gardens*, *Dear Evan Hansen*, *If/Then*, *War Paint*. Other: *Make Believe* (Second Stage); *Our Lady of Kibeho* and *Angels in America* (NY's Signature Theatre), *The Low Road*, *Machinal*, *Dogeaters*, *Romeo and Juliet* (The Public).

DANNY MEFFORD (*Original Choreographer*) has choreographed three Tony Award winning Best Musicals: *Kimberly Akimbo*, *DEH*, *Fun Home*. Directing: *Shrek* (national tour); *25th Annual Spelling Bee* (Kennedy Center); *Becoming Liv Ullman* (NY Fringe); *The Gorgeous Nothings*, *The Fitzgeralds of St. Paul* (upcoming projects). Off-Broadway highlights: *Love's Labour's Lost* (Drama Desk nomination, Best Choreography), *Miss You Like Hell*,

February House, *Much Ado About Nothing*, *Good Person of Szechwan*. International: *The Sound of Music* (tour). TV: "Rise," "Dickinson," "Fleischman Is in Trouble." MFA in Acting from Brown University/Trinity Rep.

ALEX LACAMOIRE (*Music Supervisor/Orchestrator*) has won 4 Grammys, 3 Tonys, and an Emmy for his work on *Dear Evan Hansen*, *Hamilton*, *In the Heights* and FX's "Fosse/Verdon." Music director, arranger and/or orchestrator credits include: Broadway revival of *Sweeney Todd*, *Message in a Bottle*, *9 to 5*, *Legally Blonde*, and *Wicked*. Film/TV credits include: Netflix's *Vivo* (composer), *In The Heights*, and *Tick, Tick...Boom!* (Executive Music Producer).

DANNY SHARRON (*Direction Restager*). He/him. Danny is a director of new plays and musicals, committed to creating work by and about the LGBTQ+ community. He is currently the US Associate Director for the Broadway revival of *Cabaret*, and previously oversaw four companies of *Dear Evan Hansen* (Broadway/London/Toronto/1st Nat'l Tour) as the show's Senior Associate Director. NYC-based. Proud SDC member. Full credits: dannysarron.com

BEN COHN (*Associate Music Supervisor*). Broadway: Music Director for *Death Becomes Her* (upcoming), *Dear Evan Hansen*, *Once Upon A One More Time*. Assistant Conductor for *Wicked*. Music Director for Clay Aiken and Stephanie J. Block. Conducted *Sunset Boulevard* and *Tick, Tick... Boom!* at the Kennedy Center. Ithaca and NYU Grad. Lives In NYC with his husband and son.

MARK MYARS (*Direction/Choreography Restager*). Broadway Resident Director/Choreographer: *Death Becomes Her*. Broadway Associate Choreographer: *Dear Evan Hansen* (National Tour, London), *The Cher Show*, *My Fair Lady* (National Tour, London), *SpongeBob Squarepants*, *War Paint*, *If/Then* (National Tour). International Dance Supervisor: *Wicked* (National Tour, Chicago, London, Japan, Germany, Australia). Film/TV Associate Choreographer: *Isn't It Romantic*,

WHO'S WHO IN THE CAST

“Schmigadoon”. Mark is a Guest Musical Theater Teacher and teaches Master Classes nationwide. www.markmyars.com

DAVID KORINS (*Scenic Design*). Broadway: *The Who's Tommy*, *Here Lies Love* (Tony nom), *Hamilton* (Tony nom), *Beetlejuice* (Tony nom), *Dear Evan Hansen*, *Just For Us*, *Mrs. Doubtfire*, *War Paint* (Tony nom), *Bandstand*, *Misery*, *The Great Society*, *Motown the Musical*, *Vanya and Sonia and Masha and Spike*, *Annie*, *Bring It On*, *Godspell* and *Passing Strange*. Television: “Grease: Live!” (Emmy Award), 91st and 94th Academy Awards (Emmy nom).

PETER NIGRINI (*Projection Design*) is one of Broadway's pioneering projection designers. His work includes *Hell's Kitchen*, *The Who's Tommy*, *Here Lies Love*, *MJ*, *Ain't Too Proud*, *Beetlejuice*, *Dear Evan Hansen*, *The SpongeBob Musical*, *A Doll's House Part 2* and *Fela!*. In other venues and forms including *Ground* (Public Theater), *Lucia de Lammermoor* and *Don Giovanni* (Santa Fe Opera), *The Grace Jones Hurricane Tour*, and *Deep Blue Sea* for Bill T. Jones/Arnie Zane Dance.

EMILY REBHOLZ (*Costume Design*). Broadway: *Gutenberg! The Musical!*; *Jagged Little Pill* (Tony Award nomination); *Frankie and Johnny in the Clair de Lune*; *Getting the Band Back Together*; *Indecent*; *Oh, Hello on Broadway*; *If/Then*; *Vanya and Sonia and Masha and Spike*; *Bloody Bloody Andrew Jackson*. Off-Broadway: Lincoln Center, Roundabout, NYTW, Public Theater, LAByrinth Theatre Company, Playwrights Horizons, Second Stage, NY City Center, among others. Opera: The Santa Fe Opera House and Opera Theater St. Louis. MFA: Yale

JAPHY WEIDEMAN (*Lighting Design*). 20 Broadway shows: *The Heart of Rock n Roll*, *SHUCKED!*, *The Piano Lesson*, *Summer 1976*, *Dear Evan Hansen*, *The Visit*, *The Nance*, *Of Mice and Men*, *Airline Highway*, *Lobby Hero*, *Bright Star*, *Charlie and the Chocolate Factory*. West End: *Dear Evan Hansen* (Noel Coward), *A Nice Fish* (Harold Pinter Theatre), and *Blackbird* (Albery Theatre). Production and Lighting Designer for Liz Phair's *Exile in*

Guyville national tour, and for Hasan Minhaj's *The King's Jester* at Radio City and National Tour. 5 Tony Nominations for Lighting Design.

NEVIN STEINBERG (*Sound Design*). Broadway: *The Notebook*, *Sweeney Todd* 2023 Revival (Tony Award), *TINA — The Tina Turner Musical* (Tony nomination), *Hadestown* (Tony award), *Hamilton*, *Dear Evan Hansen*, *Freestyle Love Supreme*, *The Cher Show*, *Bandstand*, *Bright Star*, *It Shoulda Been You*, *Mothers and Sons*, *Rodgers+Hammerstein's Cinderella* (Tony nomination), *The Performers*. Over thirty other Broadway productions with Acme Sound Partners and five additional Tony nominations: *The Gershwins' Porgy and Bess*, *Bengal Tiger at the Baghdad Zoo*, *Fences*, *Hair*, *In The Heights*.

MURNANE CASTING (*Casting*) is a first-class office in New York City specializing in casting theatre, film, and television projects nationwide. We focus on developing new works and collaborating with emerging creators. Our mission is to curate exceptional ensembles of artists in a relaxed and imaginative casting environment. Learn more at MurnaneCasting.com.

KELSEY VENTER (*Assistant Director/Assistant Choreographer*). Venter was a member of the First National Tour of *Dear Evan Hansen*, serving as the tour's Dance Captain and as the cover for Heidi Hansen and Cynthia Murphy. As a performer, she has worked at theaters across the country including the Old Globe, the American Conservatory Theater, Guthrie Theatre and the Kennedy Center. Venter earned her BA in Theater from SDSU and her MFA from the American Conservatory Theater. kelseyventer.com

TALITHA FEHR (*Music Coordinator*) has worked on over 75 national and international productions and tours since 2005. Highlights include: *Sister Act*, *Mamma Mia!*, *School of Rock*, *Come Fly Away*, *Phantom of the Opera*, *Love Never Dies*, and *Priscilla Queen of the Desert* as well as the 2010 Olympic Ceremonies in Vancouver. She dedicates her work on *Dear Evan Hansen* to the memory of her mentor, Sam Lutfiyya.

WHO'S WHO IN THE CAST

RANDY COHEN (*Keyboard Programmer*). Cohen Keyboards has programmed or provided keyboard tech services for over 100 Broadway shows including *Hamilton*, *Book of Mormon*, *Dear Evan Hansen*, *In The Heights*, and *Kinky Boots*. TV: "Sesame Street," "Electric Company." Thanks to Sam, Tim, and Nick.

MICHAEL HOPEWELL (*Music Director*). Off-Broadway: *Once We Lived Here* (US Premiere); Tours: *My Fair Lady*, *The Phantom of the Opera*, *White Christmas*, *Dirty Dancing*. Regional: Tuacahn Amphitheater, John W. Engeman Theater, Gateway Playhouse; Recordings: Stage Stars Records (*Urinetown*, *The Wizard of Oz*, *How To Succeed...*). Love to my family. Endless thanks to Ben, Talitha, and DAR. For Mom, who taught me how.

ANNA KLEVIT (*Production Stage Manager*) is elated to be part of *Dear Evan Hansen*! National Tours: *Annie*, *My Fair Lady*, *Rudolph*. Selected regional credits: *What We Talk About...* (Old Globe); *Into the Woods*, *Matilda*, *Fireflies*, (South Coast Repertory); *Memphis*, *Once on This Island* (Moonlight Amphitheatre). This one's for Mom and Dad.

KATY GENTRY (*Assistant Stage Manager*). National tours: *Annie*. Selected regional credits: *Theater of the Mind*; *Rattlesnake Kate*; *Quixote Nuevo* (Denver Center); *Sound of Music*, *Sweeney Todd* (Asolo Rep); *Tiger Style* (Olney Theatre Center). Katy holds a BFA from the University of Central Florida.

AARON MARTIN (*Company Manager*) is from Birmingham, AL, and excited to be on the *DEH* team! National Tours (ACM): *Annie*, *Anastasia*. Regional: Maine State Music Theatre (ACM); Florida Repertory Theatre (CM); Berkshire Theatre Group, Weston Playhouse (Intern). Thanks to the Crossroads Team, Katy, Anna, and Patrick. Love to family and friends.

LINDSAY KAPLAN (*Assistant Company Manager*) is thrilled to be on the road with *DEH*! Previous tour: *CATS*! Lindsay is a recent graduate from The Theater School at DePaul University. She would like to thank friends and family for always supporting her! IG: @llindsaykaplan

GREGG DAMANTI (*Production Manager*). A 24-year theater veteran, Gregg started as a Production Stage Manager for Busch Entertainment, and later became the Production Manager for *Blue Man Group* in NYC. National tour credits include the first national of *On Your Feet!*, *CATS*, the first national of Lincoln Center's *My Fair Lady*, *Pretty Woman*, and now *Dear Evan Hansen*. "Thank you to Jen and Ripley who I miss dearly while on the road, and love coming home to them both."

ANDREW TERLIZZI (*General Manager*) comes to Crossroads Live after a 17-year touring career, 10 of which were with TROIKA Entertainment. Current GM credits: *Dear Evan Hansen*, *Pretty Woman: The Musical*. Select other credits: Jimmy Buffett's *Escape to Margaritaville*, *Bodyguard the Musical*, and *Priscilla Queen of the Desert*. He holds a B.F.A. from the University of North Carolina School of the Arts.

THE BOOKING GROUP (*Tour Direction*) has represented 28 Tony Award® winning Best Musicals and Plays. Current tours include *The Book of Mormon*, *Chicago*, *Come From Away*, *Dear Evan Hansen*, *Hadestown*, *Hamilton*, *Mamma Mia!*, *Mean Girls*, *MJ The Musical*, *Mrs. Doubtfire*, *Parade*, *Pretty Woman*, *SIX*, *Some Like It Hot*, *TINA — The Tina Turner Musical*, and *The Wiz*.

BOND THEATRICAL (*Tour Marketing & Publicity*) is an independently-owned theatrical booking, marketing and publicity company representing award-winning Broadway shows and live entertainment properties. BOND connects artists and audiences by forming strategic, authentic and profitable partnerships between producers and presenters across North America. For a complete list of current projects, please visit BondTheatrical.com

NEURO TOUR (*Physical Therapy*). Carolyn Lawson PT, founder and CEO of NEURO TOUR & Neurosport (Physical Therapy), Global leaders in entertainment and performing arts medicine. We are honored to be part of this amazing touring company

WHO'S WHO IN THE CAST

Dear Evan Hansen. NEURO TOUR, Keeping performers happy, healthy & on stage.

MUSIC THEATRE INTERNATIONAL (MTI) is one of the world's leading theatrical licensing agencies, granting theatres from around the world the rights to perform the greatest selection of musicals from Broadway and beyond. Founded in 1952 by composer Frank Loesser and orchestrator Don Walker, MTI is a driving force in advancing musical theatre as a vibrant and engaging art form. MTI works directly with the composers, lyricists and book writers of these musicals to provide official scripts, musical materials and dynamic theatrical resources to over 70,000 professional, community and school theatres in the US and in over 60 countries worldwide. MTI is particularly dedicated to educational theatre and has created special collections to meet the needs of various types of performers and audiences. MTI's Broadway Junior™ shows are 30- and 60-minute musicals for performance by elementary and middle school-aged performers, while MTI's School Editions are musicals annotated for performance by high school students. MTI maintains its global headquarters in New York City with additional offices in London (MTI Europe) and Melbourne (MTI Australasia).

JAYNA NEAGLE (*Executive Producer*). For *Cirque du Soleil: 'Twas the Night Before, Paramour* (Broadway, Hamburg); *The Wiz* (NBC production). For BASE Entertainment: *Arrabal* (Buenos Aires, Toronto), *Jersey Boys* (Johannesburg, Asian tour), *Priscilla Queen of the Desert* (São Paulo), *The Lion King* (Singapore), Jerry Mitchell's *Peepshow* (Las Vegas), *Wayne Brady: Making Sh@ Up* (Las Vegas).

CROSSROADS LIVE (*Producer & Tour Management*) brings together some of the world's top producers of live entertainment, now all under one banner. With offices in London, New York, Washington, D.C., Sydney, and Melbourne—our global platform ensures the best-loved titles from Broadway and the West End can be embraced by audiences

around the world. Crossroads Live North America, under the leadership of Angela Rowles, is an innovative, full-service theatrical production company delivering the Broadway experience to audiences in North America and beyond. Our 2024–2025 Season: *Annie; Dear Evan Hansen; Dr. Seuss' How The Grinch Stole Christmas! The Musical; Pretty Woman; The Phantom of the Opera* (Asia); *TINA — The Tina Turner Musical*.

STAFF FOR DEAR EVAN HANSEN

FOR CROSSROADS LIVE NORTH AMERICA EXECUTIVE PRODUCER

Jayna Neagle

GENERAL MANAGER

Andrew Terlizzi

PRODUCTION MANAGER

Gregg Damanti

Assistant Production Manager. Suzayn MacKenzie-Roy

COMPANY MANAGER

Aaron Martin

Assistant Company Manager Lindsay Kaplan

TOUR MARKETING & PUBLICITY

BOND THEATRICAL

bondtheatrical.com

DJ Martin Temah Higgins Mollie Mann

Marc Viscardi Wendy Roberts

Tony Joy Elisabeth Reyes

TOUR DIRECTION

THE BOOKING GROUP

Meredith Blair

Rich Rundle, Brian Brooks

Jonathan Pearson and Maryruth Grabez

thebookinggroup.com

CASTING

MURNANE CASTING

Chad Eric Murnane, CSA

Amber Snead, CSA

Nathaniel Riccio

PRODUCTION STAGE MANAGER Anna Klevit

Assistant Stage Manager Katy Gentry

Dance Captain Monica Blume

Associate Scenic Designer Richie

Oulette & Javier Ameijeiras

Production Carpenter G.E. Simmons Falk

Costume Coordinator Hayley King

Hair & Makeup Coordinators Liz Printz, Nina Job

Assistant Costume Coordinator Daniella Pineda

Production Stitcher Aislinn Smith, Mia Mooney

Associate Lighting Designer Ken Wills

Moving Light Programmer Jeremy Goldenberg

Production Electrician Joel Bulthuis

Associate Sound Designer Mackenzie Ellis

Assistant Sound Designer Jamie Davis

Production Audio Alec Harris

WHO'S WHO IN THE CAST

Associate Projection Designer.....Kate Ducey
 Projection/Video Programmer.....Sean Hooper
 Video Animator.....Zoey Crow
 Production Video.....Lorenzo Lagola, Jordan Brown,
 Tristan Van Tine
 Assistant Keyboard Programmer.....Sam
 Starobin, Tim Crook,
 Nick Schenkel
 Guitar Programmer.....Dillon Kondor
 Virtual Voices Produced by.....Todd Hart/Vegas Voices
 Virtual Voices Mixed by.....Ian Kagey
 Production Assistant.....Alex Magallanes

HEAD CARPENTER.....**Matthew Lamers**
 Assistant Carpenter Fly Position.....Alyssa Cargill
 Deck Carpenter.....Donovan Diggs
 Head Props.....Ani Inman
 Head Electrician.....Chandler Gray
 Assistant Electrician - Video.....Jake Gomez
 Assistant Electrician - FOH.....Aaron Kurland
 Head Audio.....Mitchel Rieth
 Assistant Audio.....Meg Schelling
 Wardrobe Supervisor.....Melina Hernandez
 Crew Swing.....Andi Voigt
 Physical Therapy Company.....NEURO TOUR Physical
 Therapy, Inc.
 Insurance.....EPIC Insurance Brokers
 Social Media.....Think Tank Marketing
 Tour Marketing & Publicity Office.....BOND Theatrical/
 Nilesa Alexander, Jenny Bates, Kolten Bell, Melissa
 Cohen, Jesse Daniels, Caroline Frawley, Ayana
 Jernigan, Steph Kelleher, Deborah Mann, Harrison
 Mootoo, Scotland Newton, Laura Rizzo, Madison St.
 Amour, Linda Stewart, Jacob Stuckelman
 Production Photography.....Evan
 Zimmerman for MurphyMade
 Merchandise Provider.....Creative Goods
 Merchandise Manager.....Gena Byrd

CROSSROADS LIVE NORTH AMERICA

Chief Executive Officer.....Angela Rowles
 Executive Producer.....Jayna Neagle
 Executive Producer.....Kori Prior
 Vice President of People Operations.....Charisse Fontes
 Vice President of Finance.....Brian Jacob
 Vice President of Marketing.....Michael Yuen-Killick
 Senior General Manager.....Andrew Terlizzi
 Director of Production.....Heather Chockley
 Director of Booking and Engagements.....Tyler Soltis
 Production Manager.....Gregg Damanti
 General Manager.....Deana Marie Kirsch
 Engagement Manager.....Barrett Newman
 Warehouse Manager.....Coree Howard
 Associate General Manager.....Melanie Cahill
 Associate General Manager.....Emily Miu
 Assistant Production Manager.....Suzayn MacKenzie-Roy
 Assistant Production Manager.....Drew Neitzey
 Production Accounting Manager.....Sheila Lewis
 Production Accountant.....Travis Huebel
 Staff Accountant.....Electra Walker
 Executive Assistant to the CEO.....Alissa Klusky
 Assistant Warehouse Manager.....Joshua Cookson
*Learn more about Crossroads Live North America and
 our team: www.xroadslive.com*

CREDITS

Scenery by TTS Studios. Lighting equipment from PRG. Sound equipment by MASQUE. Video equipment by 4Wall. Rigging by Phoenix Lighting and Rigging. Rehearsal Studio: Pearl Studios, NYC. Trucking by JANCO. Touring Company Lobby Signage by Express Signs in Frederick, MD.

SPECIAL THANKS

Dear Evan Hansen rehearsed at Pearl Studios in New York, NY. Technical Rehearsals and Previews held at the Tobin Center in San Antonio, TX.

Dear Evan Hansen is proud to collaborate with: **Crisis Text Line**. In crisis? Text HELLO to 741741 for free, 24/7 crisis support.
The Jed Foundation (JED), a nonprofit that exists to protect emotional health for our nation's teens and young adults. Jedfoundation.org

@DearEvanHansen
www.dehtour.com



Backstage Employees are represented by the International Alliance of Theatrical Stage Employees (or I.A.T.S.E.).



The Director and Choreographer are members of the **STAGE DIRECTORS AND CHOREOGRAPHERS SOCIETY**, a national theatrical labor union.



United Scenic Artists • Local USA 829
 of the I.A.T.S.E. represents
 the Designers & Scenic Artists
 for the American Theatre

WARNING

The photographing or sound recording of any performance or the possession of any device for such photographing or sound recording inside this theatre, without the written permission of the management, is prohibited by law. Violators may be punished by ejection and violations may render the offender liable for money damages.

PALACE THEATER STAFF DIRECTORY

BOARD OF DIRECTORS

Martin Morgado, <i>Chair</i>		Shae Apland, <i>Marketing Committee Chair</i>	
Michael O'Connor, <i>Treasurer/Vice Chair</i>		Mary Rosengrant Chiappalone, <i>Development Committee Chair</i>	
Jack Senich, <i>Vice Chair</i>		Dr. Peter Jacoby, <i>Past Chair</i>	
Dora Bennett, <i>Secretary</i>			
Vanessa Aguilar	Carolyn Highsmith	Sandra	Christopher Rempfer
Kathleen Brochhausen	J.C. Hopkins	Martinez-McCarthy	Felix Rodriguez
Mary Grace Cavallo	Dr. Scott Kurtzman	Lynnette Letsky	Timothy Rourke
Beth Devino	Dave Martin	Piombo	Matthew Tryforos
Joseph D'Orso		Giuseppe "Joe" Pisani	

BOARD OF ADVISORS

Carolyn F. Cicchetti	Timothy C. Moynahan	James C. Smith	Sandra Vigliotti-Senich
----------------------	---------------------	----------------	-------------------------

CHIEF EXECUTIVE OFFICER

Frank Tavera

ADMINISTRATIVE STAFF

Ana Dec, *Programs & Ticketing Officer*
Dave Flowers, *Chief Production Officer*
Debbie Forchielli, *Volunteer Coordinator*
Denise Hinkelman, *Box Office Coordinator & Development Services*
Brian Kimmey, *Design & Digital Manager*
Natalie Lawlor, *Development Officer*
Tina Lubus, *Finance Manager*
Meg Luddy, *Tour Coordinator*
Sheree Marcucci, *Director of Special Projects & Curated Programs*
Emanuel Neri, *Building Porter*
Andrea Nyquist, *Marketing, Sales & Public Relations Officer*
Stephanie Panico, *Special Events Manager*
Deirdre Patterson, *Box Office Manager*
Lindsey Rosa, *Development Associate*
Sandra Rosa, *Finance Officer*
Matt Sivilla, *Building Mechanic*
Lisa Suzio, *Director of Hospitality*
Ashley Sweet, *Operational Events Manager*
Peggy Terhune, *Communications Manager*
Sydney Wyatt, *Digital Marketing Coordinator*

TECHNICAL STAFF

Dave Barata, <i>Head Sound Engineer</i>	Karin Lopez, <i>Wardrobe Mistress</i>
Andrew Bynum, <i>Head Electrician</i>	Catherine Moore, <i>Properties Manager</i>
Gardner Friscia, <i>Head Carpenter</i>	Ken Owens, <i>Head Flyman</i>

HOUSE MANAGERS

Donna Cameron	Crystal LaBonte	Joe Frascatore
---------------	-----------------	----------------

2024-2025 CORPORATE PARTNERS

CORPORATE SPONSORS



CORPORATE MEMBERS

Aeroswiss LLC
Albert Brothers
American Heating Service
Bunker Hill Pharmacy
Carpin Manufacturing
Coil Pro Machinery, Inc.
The Corbo Group
Demsey Manufacturing Company
Diversified Building Services

Gaffney, Bennett & Associates, Inc.
Hubbard-Hall Inc.
Jaci Carroll Staffing
L.F. Powers Co., Inc.
Marion Manufacturing
Metallon, Inc.
Montagno Insurance Inc.
Moore, O'Brien & Foti
Nanavaty Davenport
Studley White LLP

Atty. Thomas & Janine Pettinicchi
Republican-American
Savings Bank of Danbury
Secor, Cassidy & McPartland, PC
Suzio-York Hill
Tomasso Group
TORRCO
Tracy Driscoll Insurance &
Financial Services

INSTITUTIONAL SUPPORTERS

Adam Broderick Salon & Spa
American Savings Foundation
Arts & Culture Collaborative —
Waterbury Region
Bank of America
Barter Business Unlimited
Cavallo's Imported Italian Foods
Central CT
Chambers of Commerce
City of Waterbury,
Arts & Tourism Commission
CompuMail
Connecticut Community
Foundation
Connecticut Public Radio
Corporate Display Specialties
David, Helen & Marian
Woodward Fund
DNR Laboratories
Emily's Catering Group
Eversource Energy Foundation

Fascia's Chocolates
Felix Manuel Photography
Frank Pepe Pizzeria Napoletana
Frankie's of Reidville Drive
George A. & Grace L. Long
Foundation
Gracewell Productions
Graham's Florist LLC
Greater Waterbury YMCA
Harry's Party Rental
LaBonne's Markets
Michael's Greenhouses
Naugatuck Valley
Ear, Nose & Throat
New England
Arts & Entertainment
The Next Street
Selim & Linda Noujaim
Onyx II Fine Jewelers
Pepsi Cola of Bristol

Perry's Cleaners
Prospect Printing Company
Republican-American
Mary Ellen & Tim Rourke
Susan Suhr & Marina Viale
Sweet Maria's
Thomaston Savings Bank
Thomaston Savings Bank
Foundation
Tower Design & Print LLC
United Way of Greater Waterbury
Verbena Caterers
The Village at East Farms
Waterbury Regional Chamber
Waterbury Symphony Orchestra
Watertown Foundation
WATR Radio 1320 AM
WORX
WSHU Public Radio
WTNH News Channel 8

The Prospect Printing Company

16 Waterbury Rd.
Prospect, CT 06712

Tel: 203.758.6007
Fax: 203.758.3349

www.prospectprinting.net
info@prospectprinting.net

**High Quality Offset
and Digital Printing**

Brochures • Letterheads
Business Cards • Envelopes
Banners • Signs • Posters
Promotional Products
Variable Data & More!

THE MOYNAHAN LAW FIRM

"At Moynahan Law,
we understand the
importance of trust
and will do what it
takes to earn it."



TIMOTHY C. MOYNAHAN
Attorney at Law

(203) 597-6364
www.moynahanlaw.com



134 Highland Avenue
Waterbury, CT 06708

We're serious about math **BEING FUN!**



Kids who learn to love math gain confidence for a successful year. Mathnasium students learn from highly trained instructors in a fun and engaging environment. As their skills increase, they grow in confidence not just in math, but in all their subjects.

Mathnasium of Naugatuck Valley
203-757-1234
Ages 6 - adults
www.mathnasium.com/naugatuckvalley

Contact Us for a Free Assessment
www.mathnasium.com

MATHNASIUM
The Math Learning Center



Pepsi Cola
of Bristol

Proudly Supports the
Palace Theater



The Brands You Love.
Locally Owned & Operated

110 Corporate Drive, Southington, CT 06489
www.pepsicolabristol.com
(860) 628-8200



Shangri-La

CONNECTICUT'S NEWEST
CANNABIS RETAILER



VISIT
US!

NORWALK

430 MAIN AVE

75 CONNECTICUT AVE

PLAINVILLE

359 NEW BRITAIN AVE

WATERBURY

53 INTERSTATE LN

DO NOT USE CANNABIS IF YOU ARE UNDER TWENTY-ONE YEARS OF AGE.
KEEP CANNABIS OUT OF THE REACH OF CHILDREN.



Powered by Ameriprise
Financial

**JOSH
BRODER**

Forbes Best-In-State
Wealth Advisors, 2024



START
PLANNING
FOR YOUR
TOMORROW
TODAY.



203.823.9114 x319



joshua.m.broder@ampf.com



1781 Highland Ave. Suite 207
Cheshire, CT 06410

At Centurion Wealth Management, we strive to inspire confidence, simplify life, and reduce stress. As your trusted advisor, we provide personalized advice to help you achieve your goals and dreams.

LEARN MORE: WWW.CENTURIONWEALTHMNGT.COM



TOMASSO GROUP

Proud to support
the **PALACE THEATER**, and
proud to have been part of its renovation!

BEFORE



AFTER

One Liberty Square, New Britain, Connecticut 06051

Ph: (860) 224-9977

TomassoGroup.com



Experience the Award-Winning Care at Saint Mary's Hospital

This year we have been awarded both a Four-Star Quality Rating from the Centers of Medicare and Medicaid Services (CMS) and our third straight "A" from the Leapfrog Hospital Safety Grade.

Recognition for our quality care, safety and patient satisfaction shows that you are our top priority!



Saint Mary's Hospital
Trinity Health

56 Franklin Street, Waterbury, Connecticut 06706

TrinityHealthOfNE.org



For over 175 years, we've been at the heart of Waterbury.

As a 6th generation family business, we believe in expanding possibilities for our communities through volunteer work, direct investment and environmental stewardship.



Learn about our legacy.



HERE, WE'RE HUSKIES

 High-Quality Education

 Affordable

 Close to Home

UConn Waterbury and the Osher Lifelong Learning Institute celebrate more than two decades at the heart of downtown.

#9 4-Year, Public University for Return on Investment

(Georgetown University, 2022)

UConn
WATERBURY



MONTAGNO
INSURANCE AGENCY
AUTO | HOME | BUSINESS | LIFE

VOTED BEST INSURANCE AGENT CONNECTICUT

VOTED BEST INSURANCE AGENCY
 Republican American

Celebrating 60 years of serving clients with care and dedication!

As proud sponsors of the Palace Theater, we're dedicated not only to our clients but also to the community we serve. Experience the difference of working with a company that values your peace of mind.



Kim Fitzgerald
2024 Fortune Five Star Legend



Mark Montagno

Montagno Insurance Inc.
344 Robbins St. Waterbury, CT 06708

 InsuranceQuotesCT.com

203-574-5211

 @Montagnoinurance

SERVICING ALL OF CONNECTICUT

BOOK YOUR **SPECIAL EVENTS** HERE!



88 KEYS
on Main

THE PERFECT PRIVATE PARTY EXPERIENCE

FAMILY · CORPORATE · SPECIAL EVENTS
FRESH SIGNATURE PLATES · CRAFT COCKTAILS
LIVE MUSIC OPTIONS

BOOK US!

860.417.2414
88KEYSPIANOBAR.COM
1278 MAIN STREET
WATERTOWN, CT



We learned a lot in 70 years



Waterbury Palace Theater Marquee. Completed October, 2006

Like how to build powerful images.
We can build yours too.



ABC SIGN
CORPORATION



POWER Your Next Event

WITH THE EVENT **EXPERTS**

- ⚡ Audio & Video Production
- ⚡ Lighting & Staging
- ⚡ DJs & Entertainers
- ⚡ Bands & Musicians
- ⚡ Decor & Florals
- ⚡ Photography
- Corporate Events ⚡
- Non-Profit Events ⚡
- Galas & Fund-Raisers ⚡
- Parties & Celebrations ⚡
- Weddings & Family Events ⚡
- Graduations & More ⚡

*Proud to be the Official Event Services Partner
of the Palace Theater!*



Official Event Production Partner to:



...and serving as A/V Production Partner for the
Travelers Championship since 2010!



Cheshire, CT

www.PowerstationEvents.com

203-250-8500

American Standard



TORRICO | BATH & KITCHEN SHOWROOM

OFFERING DECORATIVE PLUMBING & LIGHTING,
VANITIES, CABINET & DOOR HARDWARE.

VISIT OUR BEAUTIFUL WATERBURY SHOWROOM
100 NORTH ELM STREET

Since 1917 • www.TorrcoDesignCenter.com • 203.756.3641

STAMFORD • FAIRFIELD • DANBURY • NEW HAVEN • EAST WINDSOR • WATERBURY



96%*



**Personal Banker Relationship
Satisfaction Rate**

*Rivel Research Group

Because we build lifetime relationships.

Your Ion Banker partners with you to understand your business objectives and service your needs with tailored solutions.

See why 96% of Ion Bank business customers are satisfied. Experience the difference with us.

Visit a branch or call a
Business Banker today!

ion BANK™

[IonBank.com](https://ionbank.com) • 203.729.4442

Member FDIC